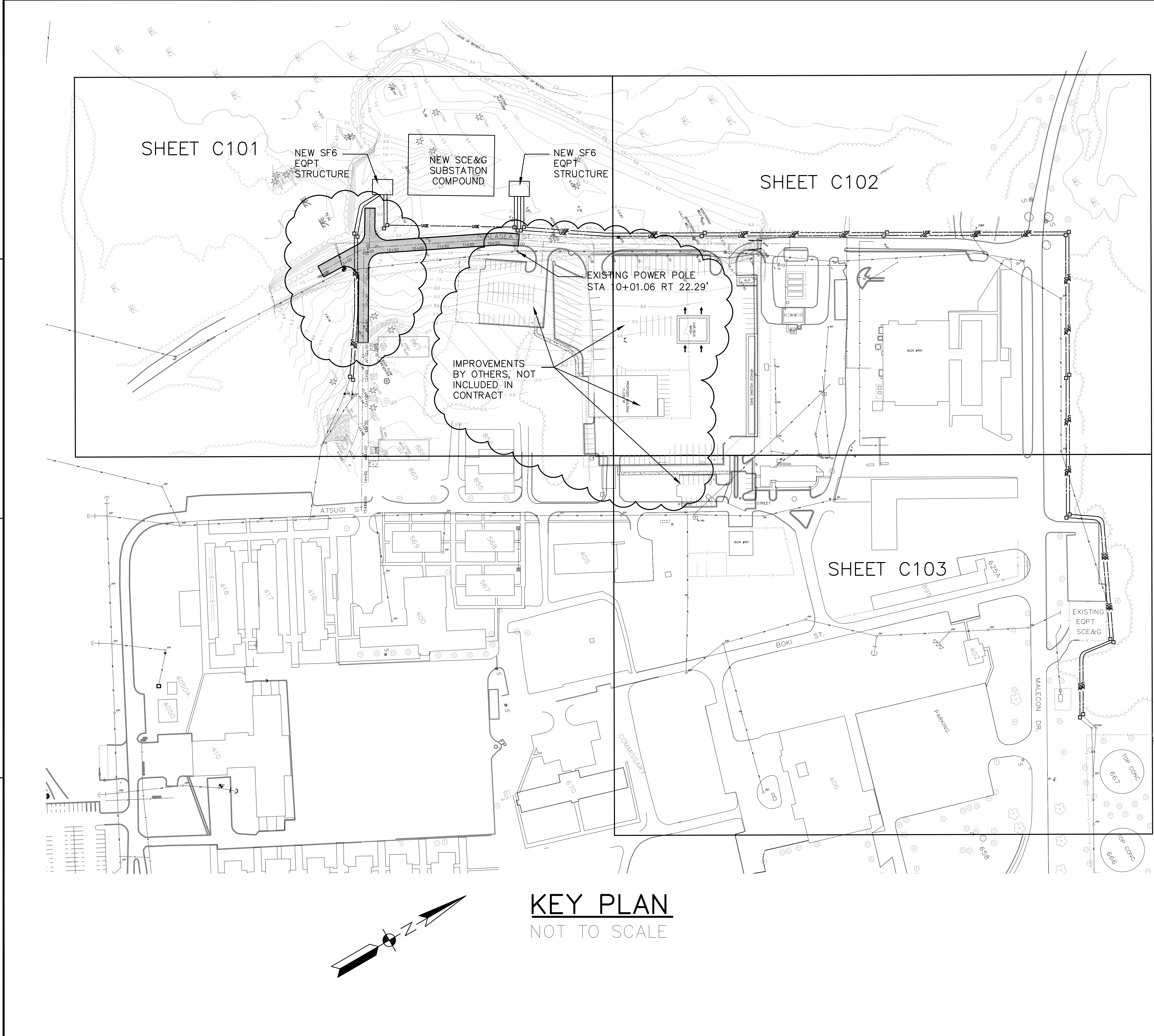


FILE NAME: P:\CIBL\Project_SOUTH_CAROLINA\MCRD_BEALFORT_P1_SCH\H00263\360-ELECTRICAL_SUBSTATION_AND_SYSTEM_UPGRADE-796570\Working_Tech\Amendment-5-18-10.dwg LAYOUT NAME: Layout 0 PLOTTED: Wednesday, May 19, 2010 - 3:20pm USER: glenn.warner



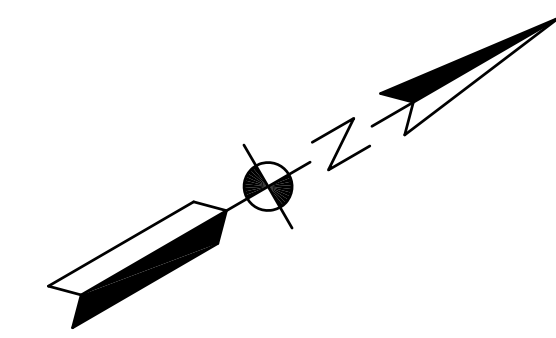
LEGEND

EXISTING		NEW
	BITUMINOUS CONCRETE	
	CHAINLINK FENCE	
	SPOT ELEVATION	
	CONTOUR	
	TREE LINE	
	TREE	
	STORM INLET	
	STORM SEWER	
	WATER	
	FIRE HYDRANT	
	WATER VALVE	
	OVERHEAD ELECTRIC	
	UNDERGROUND ELECTRIC	
	POWER POLE	
	LIGHT POLE	
	GUY WIRE	
	TELEPHONE	
	MONITORING WELL	

GENERAL NOTES:

1. CLEARING, GRUBBING AND FILL WILL BE REQUIRED FOR ALL SITE WORK, INCLUDING ROADWAY.
2. ROADWAY AND PARKING AREA MUST BE GRADED TO ENSURE SUFFICIENT DRAINAGE TO DRAIN RUNOFF OUT OF THE TRAVELED WAY AS QUICKLY AS POSSIBLE.
3. DUCT BANK ELEVATIONS SHALL BE COORDINATED WITH STORM WATER OUTFALLS AND CULVERTS, DRAINAGE SWALES AND GRADE SPECIFIC UNDERGROUND PIPING CURRENTLY IN PLACE OR ASSOCIATED WITH CURRENT MOTOR T PROJECT, P-366.
4. NOT ALL UNDERGROUND OR OVERHEAD UTILITIES SHOWN.

KEY PLAN
NOT TO SCALE



	DATE
	APPR
	DESCRIPTION
	DATE
NAVFAC	
ACCEPTED	
FOR COMMANDER NAVFAC / B.L.T.L.	
ACTIVITY	
SATISFACTORY TO DATE	
DES:	GLW DRW: GLW CHK: PR
PROJECT MANAGER:	PETE ROBSON
SRT TECH. BRANCH HEAD:	MIKE JOHNSON
CHIEF ENGR/ARCH (CORE):	AL ROMERO
DEPARTMENT OF THE NAVY NAVAL FACILITIES ENGINEERING COMMAND NAVAL FACILITIES ENGINEERING COMMAND SOUTHEAST 1FT SOUTH CENTRAL MARINE CORPS RECRUIT DEPOT	NAVAL FACILITIES ENGINEERING COMMAND NAVAL AIR STATION JACKSONVILLE PARRIS ISLAND, SC SUBSTATION RELOCATION CONCEPT SITE PLAN COVER SHEET
SCALE: NONE	
PROJECT NO.:	
CONSTR. CONTR. NO. N69450-xx-C-xxxx	
NAVFAC DRAWING NO.:	
SHEET 1 OF 13	
C100	
DRAWFORM REVISION: 1 AUGUST 2009	

