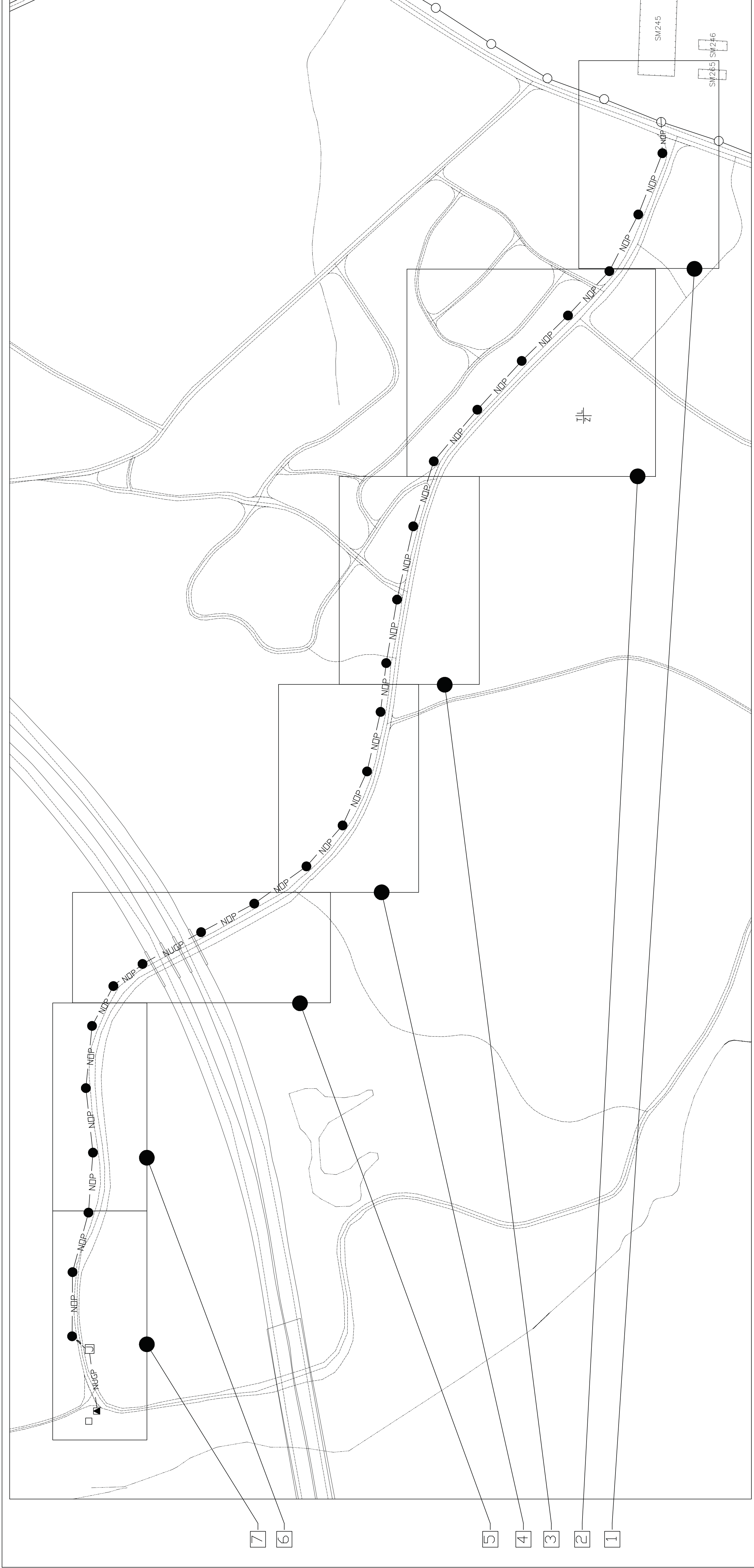


SYM	DATE	APPROVED

### LEGEND

SYMBOL	DESCRIPTION
—	PRIMARY OVERHEAD POWER: EXISTING. -SEE THIS SHEET & SHEET E-3 FOR DETAILS.
—	PRIMARY OVERHEAD POWER: NEW. -SEE THIS SHEET, SHEET E-3, E-4 & E-5 FOR DETAILS.
—	PRIMARY UNDERGROUND POWER: NEW. -SEE THIS SHEET, SHEET E-4 & E-5 FOR DETAILS.
—	SECONDARY UNDERGROUND POWER: NEW. -SEE THIS SHEET & SHEET E-5 FOR DETAILS.
○	UNDERGROUND LIGHTING CIRCUIT: NEW. -SEE THIS SHEET & SHEET E-5 FOR DETAILS.
●	POWER POLE: EXISTING. -SEE THIS SHEET & SHEET E-3 FOR DETAILS.
●	POWER POLE: NEW. -SEE THIS SHEET, SHEET E-3, E-4 & E-5 FOR DETAILS.
Y	GUY AND ANCHOR: NEW GUY (3/8" HIGH STRENGTH) AND ANCHOR (10"). -SEE THIS SHEET, SHEET E-2, E-3, E-4 & E-5 FOR DETAILS.
J	PAD-MOUNTED SECTIONALIZER CABINET: NEW. -SEE THIS SHEET, SHEET E-2 & E-3 FOR DETAILS.
▲	PAD-MOUNTED TRANSFORMER: NEW. -SEE THIS SHEET, SHEET E-2 & E-3 FOR DETAILS.
■	GUARD POST: NEW. -SEE THIS SHEET, SHEET E-2 & E-3 FOR DETAILS.
—	PANELBOARD: NEW. -SEE THIS SHEET & SHEET E-5 FOR DETAILS.
—	HOMERUN TO PANEL: NEW. -SEE THIS SHEET & SHEET E-5 FOR DETAILS.
—	CIRCUIT NUMBER: INDICATE PANELBOARD & CIRCUIT NUMBER. -SEE THIS SHEET & SHEET E-5 FOR DETAILS.
—	BRANCH CIRCUIT WIRING IN CONDUIT: NECESSARY WITHIN POLES & ABOVE CEILING. W/ 2" MIN. CLEARANCE FROM STRUCTURE. -SEE THIS SHEET & SHEET E-5 FOR DETAILS.
—	SAME AS ABOVE EXCEPT HASH MARKS (111) INDICATE NUMBER OF CURRENT CARRYING CONDUCTORS MORE THAN TWO.
—	SINGLE POLE SWITCH: NEW, 20A, 120V. -SEE SHEET E-5 FOR DETAILS.
—	3-WAY SWITCH: NEW, 20A, 120V. -SEE SHEET E-5 FOR DETAILS.
—	RECEPTACLE: NEW, 20A, 120V, GFCI. ALPHANUMERICS INDICATE PANELBOARD & CIRCUIT CONNECTION. -SEE THIS SHEET & SHEET E-5 FOR DETAILS.
—	LUMINAIRE: NEW, NL-18, 120V. -SEE SHEET E-5 FOR DETAILS.
—	EMERGENCY LUMINAIRE: NEW, NL-65, 120V. -SEE SHEET E-5 FOR DETAILS.
—	EXTERIOR/EMERGENCY LUMINAIRE: NEW, NL-48A, 120V. -SEE SHEET E-5 FOR DETAILS.



### SITE PLAN LAYOUT

SCALE: 1" = 200'-0"

### NOTES KEYS TO PLAN

- CONTRACTOR SHALL CLEAR 30 FT RIGHT OF WAY FROM EDGE OF GRAVEL ROAD. CONTRACTOR SHALL CLEAR TREES & BRUSH TO GROUND LEVEL. CONTRACTOR SHALL NOT DISTURB SOIL OR ROOT MASS. NO GRUBBING OR EARTH MOVING SHALL BE PERMITTED. TRACKED EQUIPMENT SHALL NOT BE PERMITTED FOR USE DURING THE RIGHT OF WAY CLEARING PROCESS. -SEE THIS SHEET, SHEET E-3, E-4 & E-5 FOR DETAILS.
- REMOVE EXISTING POWER POLE. PROVIDE (1) 45' CLASS 3 PRESSURE TREATED POLE: W/BURIAL DEPTH MIN. OF 6'-6". (1) LPDE1-N-TAP, GROUND, GUY & ANCHOR. -SEE THIS SHEET, SHEET E-2 & E-3 FOR DETAILS.
- PROVIDE (1) 40' CLASS 3 PRESSURE TREATED POLE: W/BURIAL DEPTH MIN. OF 6'-0". (1) LPDE1-N, GROUND, GUY & ANCHOR. -SEE THIS SHEET, SHEET E-2, E-3, E-4 & E-5 FOR DETAILS.
- PROVIDE (1) 40' CLASS 3 PRESSURE TREATED POLE: W/BURIAL DEPTH MIN. OF 6'-0". (1) LPRI-N, GROUND & GUY AS REQUIRED. -SEE THIS SHEET, SHEET E-2, E-3, E-4 & E-5 FOR DETAILS.
- PROVIDE (1) 40' CLASS 3 PRESSURE TREATED POLE: W/BURIAL DEPTH MIN. OF 6'-0". (1) VDE1-N, (1) 15KV US SINGLE PHASE TERMINAL, GROUND, GUY & ANCHOR. -SEE THIS SHEET, SHEET E-2, E-3, E-4 & E-5 FOR DETAILS.
- PROVIDE 1-#77.47KCMIL PRIMARY AND 1-#77.47KCMIL NEUTRAL CONDUCTORS, AAC. CONNECT OVERHEAD CONDUCTORS TO NEW 45' CLASS 3 POLE. -SEE THIS SHEET, SHEET E-2 & E-3 FOR DETAILS.
- PROVIDE 1-#77.47KCMIL PRIMARY AND 1-#77.47KCMIL NEUTRAL CONDUCTORS, AAC COMPLETE. -SEE THIS SHEET, SHEET E-2, E-3, E-4 & E-5 FOR DETAILS.
- PROVIDE 1-#2, 15KV, EPR W/ 133% INSULATION, COPPER, 1-#2 (N), COPPER, 600V, IN 5" CONDUIT DIRECT BURIED, 36" BELOW GRADE. -SEE SHEET E-4 & E-5 FOR DETAILS.
- PROVIDE PADMOUNT ABOVE GROUND SECTIONALIZER CABINET: 7.2KV, 1#, DEADFRONT, W/ PRECAST POLYMER CONCRETE PAD, 200 AMP 15KV LOADBREAK ELBOWS, (4) GUARD POSTS, & MISC. MATERIALS. -SEE SHEET E-2 & E-3 FOR DETAILS.
- PROVIDE PADMOUNT TRANSFORMER: 25KVA, 7.2KV-120/240V, 1#, DEADFRONT, LOOP-FEED, LESS FLAMMABLE BIDDGRADABLE FLUID FILLED, W/ PRECAST POLYMER CONCRETE PAD, 200 AMP 15KV LOADBREAK ELBOWS, 10KV SURGE ARRESTORS, (4) GUARD POSTS, & MISC. MATERIALS. -SEE SHEET E-2 & E-3 FOR DETAILS.
- PROVIDE UNDERGROUND ELECTRICAL SERVICE LATERAL TO NEW METAL BUILDING. -SEE SHEET E-2 & E-3 FOR DETAILS.
- SEE CIVIL & STRUCTURAL SHEETS FOR BUILDING DETAILS.
- PROVIDE (1) 25' CLASS 3 PRESSURE TREATED POLE: W/BURIAL DEPTH MIN. OF 5'-0"; 12SLF OF (2)-10AWG CU, (1)-12AWG CU, EGC INSTALLED IN 3/4" SCHEDULE 80 PVC; (1) XL-3 120V W/ 250 WATT HALIDE LAMP; (1) XL-21 TYPE 'D' MOUNTING BRACKET & MISC. MATERIALS. EXTERIOR AREA FLOOD SHALL BE SWITCHED CONTROLLED FROM COMMAND POST SHED. -SEE SHEET E-4 & E-5 FOR DETAILS.

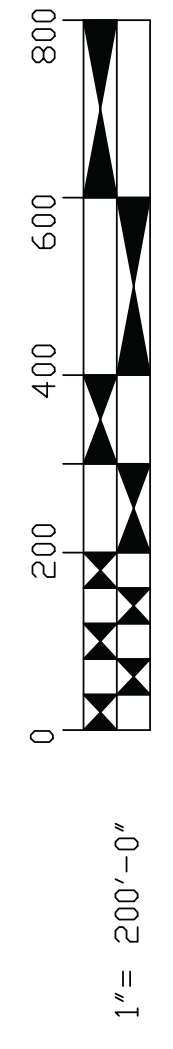
- RESTRICTIONS APPLICABLE TO EMT- DO NOT USE EXPOSED UNLESS A MINIMUM OF 10-FEET ABOVE FLOOR. DO NOT INSTALL UNDERGROUND. DO NOT ENCASE IN CONCRETE OR OTHER CEMENTITIOUS MATERIALS. DO NOT USE IN AREAS SUBJECT TO SEVERE PHYSICAL DAMAGE. USE OUTDOORS.
- SEAL ALL CONDUIT & RACEWAY PENETRATIONS. PROVIDE CONDUIT BODIES WITH NON-HARDENING CALKING COMPOUND & SEAL CONDUITS THAT ENTER CONDITIONED AREAS FROM NON-CONDITIONED AREAS.
- PROVIDE GROUNDING BUSHINGS, WEDGES & JUMPERS AS REQUIRED TO BOND ELECTRICAL SYSTEMS.
- FOR CLARITY, WIRING & CONDUITS ARE NOT SHOWN.
- CONNECT BRANCH CIRCUIT NEUTRAL TO RECEPTACLE TERMINAL BY MEANS OF A SHORT "PIGTAIL" PERMANENTLY SPLICED TO THE NEUTRAL.
- PROVIDE UNGROUND & NEUTRAL (GROUND) CONDUCTORS FOR EACH BRANCH CIRCUIT. IDENTIFY OTHER NEUTRAL WITH COLORED STRIPE WHENEVER MORE THAN ONE NEUTRAL IS IN SAME RACEWAY.
- CONTRACTOR SHALL FIELD VERIFY UNDERGROUND UTILITY LOCATIONS PRIOR TO USING MECHANICAL TRENCHERS OR DIGGERS OR DIRECTIONAL BORING EQUIPMENT.
- REFER TO RISER DIAGRAMS FOR NUMBER(S) & SIZE(S) OF WIRING & CONDUIT(S), & EQUIPMENT RATING.
- PROVIDE CORROSION RESISTANT METAL MOUNTS FOR POLE-MOUNTED EQUIPMENT. CONTRACTOR SHALL MAKE NECESSARY ARRANGEMENTS FOR SHORT TERM POWER INTERRUPTION AS REQUIRED.
- NECESSARY POWER OUTGAGES SHALL BE MINIMAL AND BE PREARRANGED BY CONTRACTOR IN COORDINATION WITH THE GOVERNMENT.
- CONTRACTOR SHALL BE RESPONSIBLE FOR APPLYING FOR ENERGIZED WORK PERMIT. CONTRACTOR SHALL MEET & COMPLETE ALL REQUIREMENTS ASSOCIATED WITH THIS PROCESS.
- PADMOUNT TRANSFORMERS SHALL BE INSTALLED A MINIMUM OF 15' FROM BUILDING.
- PROVIDE 2" MARKER TAPE 12" BELOW GRADE ABOVE UTILITY LINES INSTALLED SUBSURFACE TO PREVENT FUTURE LINE COLLISIONS. COLOR CODING AS FOLLOWS: BLUE-WATER & GAS LINES; RED-ELECTRIC & ASSOCIATED LINES; ORANGE-TELECOMMUNICATIONS & TELEPHONE LINES; PURPLE-RECLAIMED WATER LINES; RED-ELECTRIC & ASSOCIATED LINES; YELLOW-GAS & ASSOCIATED LINES.
- BASE FORESTRY SHALL HAVE FIRST RIGHTS TO ANY MARKETABLE TIMBER ON SITE. CONTACT BASE FORESTRY AT (910)451-7223 FOR HARVESTING GUIDANCE BEFORE RIGHT-OF-WAY OR SITE CLEARING BEGINS.
- ALL CONDUCTORS SHALL BE COPPER. PROVIDE INSULATED CONDUCTORS WITH EQUIPMENT GROUNDING (E.G. CONDUCTOR IN CONDUIT & RACEWAYS) W/ EGC & CONDUITS AS SIZES AS SHOWN. CONDUIT SHALL BE 120/240V POLYMER INSULATED CONDUIT. CONDUIT SHALL BE BLACK; LUG 2 RED; NEUTRAL WHITE. INSULATION SHALL BE 600- VOLT, TYPE THW/THHN EXCEPT TYPE TW FOR GROUNDING CONDUCTOR.
- PROVIDE INSULATED CONDUCTORS INSTALLED IN RIGID STEEL OR INTERMEDIATE METAL CONDUIT, OR ELECTRICAL METAL TUBING (EMT) EXCEPT PROVIDE FLEXIBLE STEEL CONDUIT BETWEEN 3 & 6 FEET IN LENGTH FOR RECESSED & SEMI-RECESSED LIGHTING FIXTURES. PROVIDE SEPARATE EQUIPMENT GROUNDING CONDUCTOR ACROSS FLEXIBLE CONNECTIONS.

### ELECTRICAL NOTES

### SITE PLAN KEY

- SITE POWER PLAN: PART A. -SEE THIS SHEET & SHEET E-3 FOR DETAILS
- SITE POWER PLAN: PART B. -SEE THIS SHEET & SHEET E-3 FOR DETAILS
- SITE POWER PLAN: PART C. -SEE THIS SHEET & SHEET E-3 FOR DETAILS
- SITE POWER PLAN: PART D. -SEE THIS SHEET & SHEET E-4 FOR DETAILS
- SITE POWER PLAN: PART E. -SEE THIS SHEET & SHEET E-4 FOR DETAILS
- SITE POWER PLAN: PART F. -SEE THIS SHEET & SHEET E-4 FOR DETAILS
- SITE POWER PLAN: PART G. -SEE THIS SHEET & SHEET E-3 FOR DETAILS

### GRAPHIC SCALE



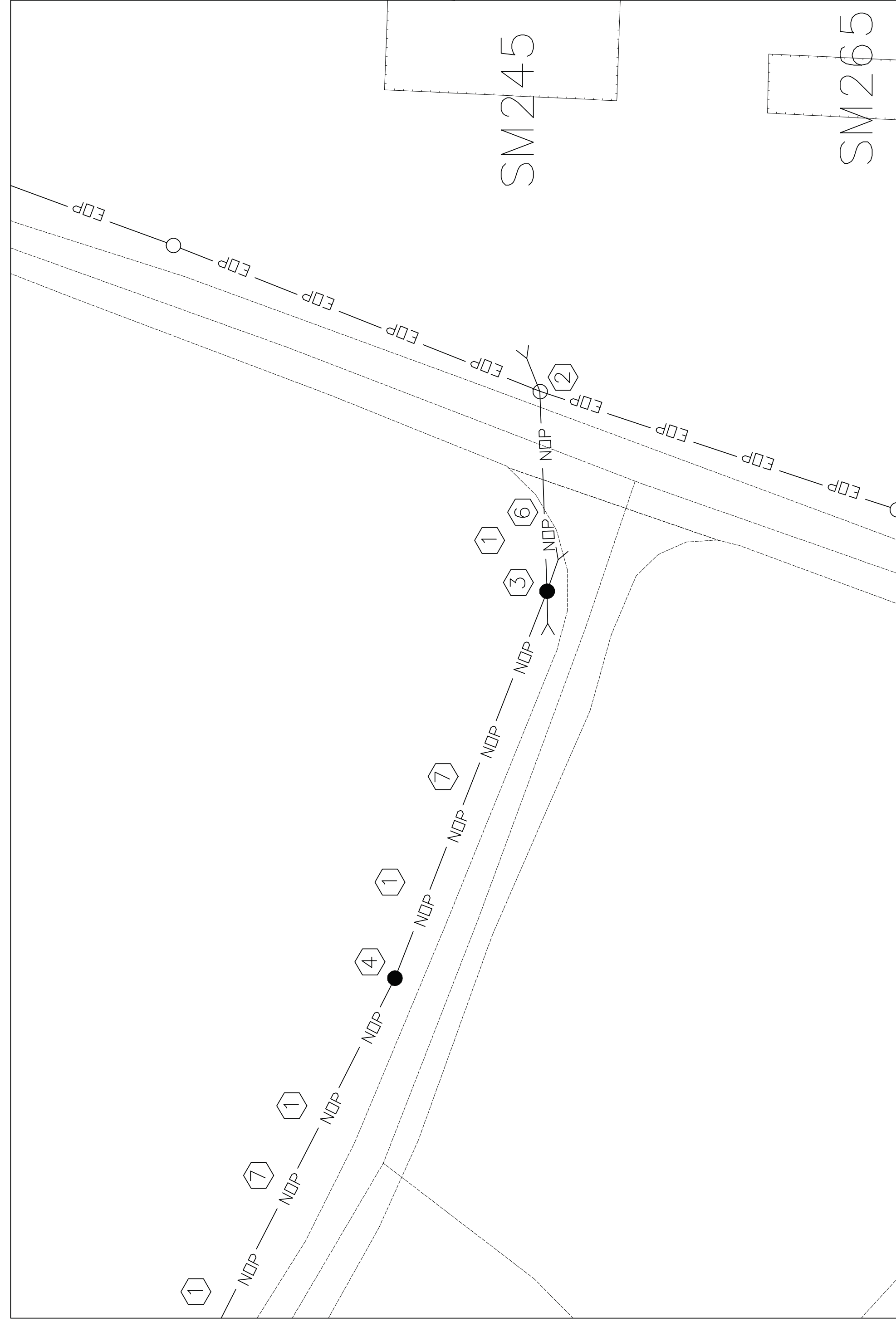
DEPARTMENT OF THE ARMY MARINE CORPS BASE CAMP LEEDNE, NORTH CAROLINA	
DES. V. JONES	DATE
DR. J. JONES	DATE
CHK. E. JONES	DATE
SUBMITTED BY: TAVLER	DATE
DESIGN DIR. B.R. MARSHBURN PE	DATE
APPROVED: PWO OR ODC	DATE
SIZE CODE IDENT: NO	DATE
<b>F 80091</b>	<b>5-13-11</b>
CONSTR. CONTR. NO. V40859-11-B-002E	DATE
SCALE: NOTED	SPEC. 05-11-002E
SHEET 6	OF 10

MARINE CORPS BASE CAMP LEEDNE, NORTH CAROLINA	
CONSTRUCT COMMAND	
POST SHED, LZ KIWI	
SITE PLAN LAYOUT, LEGEND & NOTES	
DATE	DATE
5-13-11	5-13-11
SIZE CODE IDENT: NO	DATE
<b>F 80091</b>	<b>5-13-11</b>
CONSTR. CONTR. NO. V40859-11-B-002E	DATE
SCALE: NOTED	SPEC. 05-11-002E
SHEET 6	OF 10

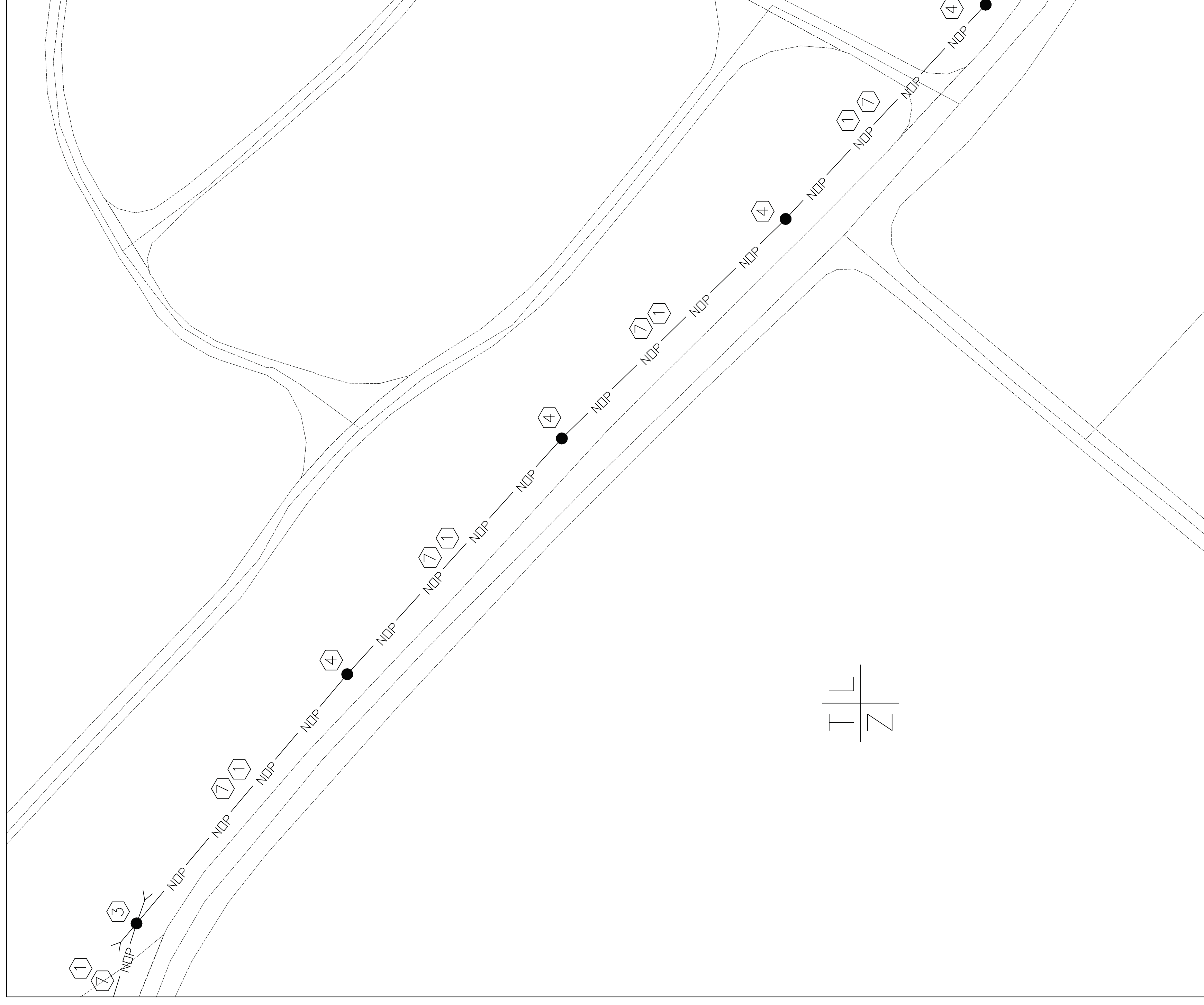


REVISIONS	
SYM	DATE APPROVED

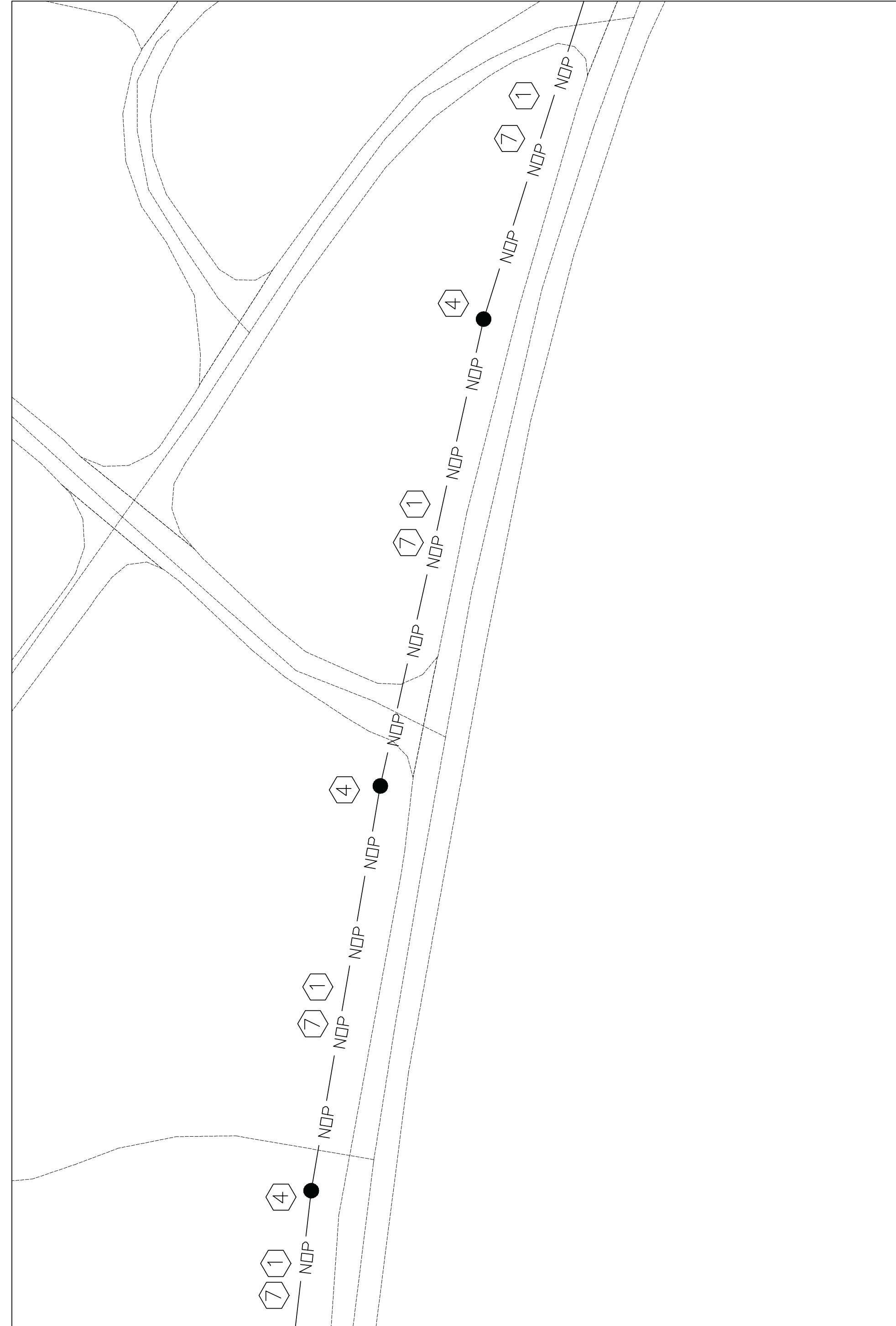
-SEE SHEET E-1 FOR DETAILS.  
(TYP. FOR ALL SITE POWER  
PLANS THIS SHEET)



SITE POWER PLAN: PART A  
SCALE: 1" = 40'-0"

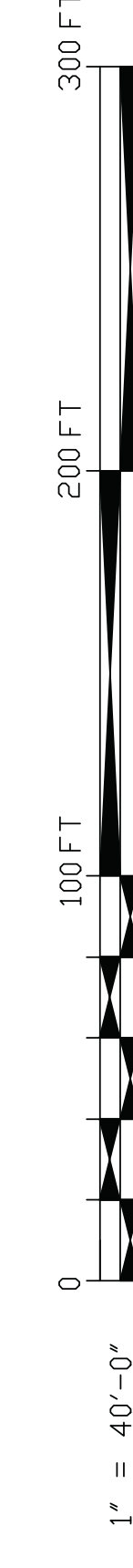


SITE POWER PLAN: PART B  
SCALE: 1" = 40'-0"



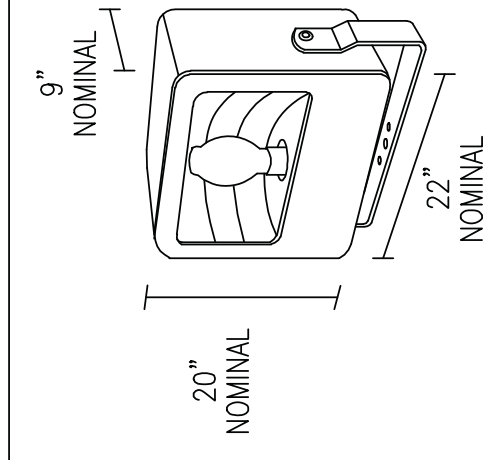
SITE POWER PLAN: PART C  
SCALE: 1" = 40'-0"

GRAPHIC SCALE



E-3	
DEPARTMENT OF THE ARMY NAVY FACILITIES ENGINEERING COMMAND	
MARINE CORPS BASE	
CAMP LEJEUNE, NORTH CAROLINA	
CONSTRUCT COMMAND	
POST SHED, LZ KIWI	
DES. BY: JONES	SITE POWER PLANS
CHK. BY: JONES	DATE: 5-13-11
CHK. BY: JONES	SIZE CODE IDENT: NO
SUBMITTED BY: TOWLER	80091
DESIGN DIR. B.R. WARSBURN PE	NAVY DRAWING NO. 8008009
APPROVED: PWO OR OBC	CONST. CONTR. NO. N4085-11-P-002
SATISFACTORY TO:	DATE:
SCALE: NOTED	SPEC. 05-11-0022
SHEET 8 OF 10	

REVISIONS		DATE	APPROVED
SYM			

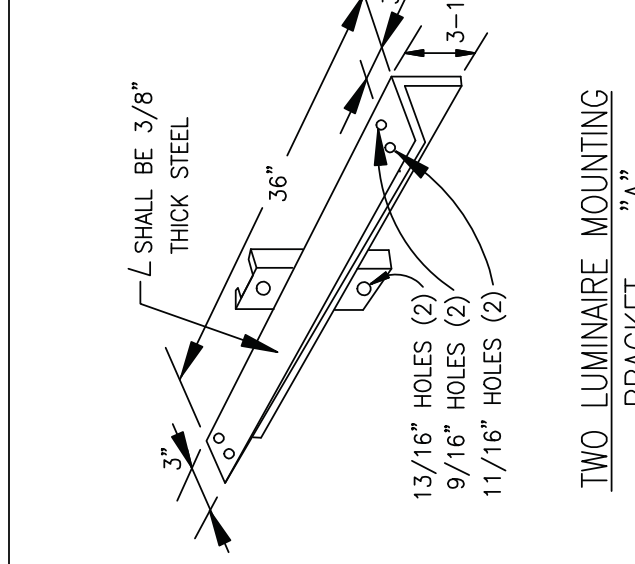


**LUMINAIRE REQUIREMENTS:**

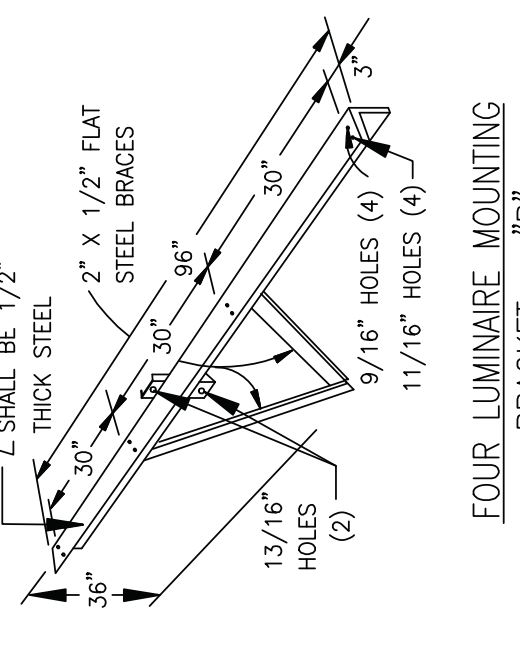
- HOUSING - ONE-PIECE DIE-CAST ALUMINUM WITH HINGED, DIE-CAST ALUMINUM DOOR. PROVIDE CONTINUOUS, ONE-PIECE SILICONE GASKET TO SEAL DOOR FRAME TO HOUSING.
- FINISH - MULTI-STAGE PRE-TREATMENT, FINISHED WITH BAKED-ON POLYESTER POWDER COATING. FINISH SHALL BE BLACK OR ANOTHER FINISH AVAILABLE UPON REQUEST. RESISTANCE - DARK BRONZE OR BLACK STANDARD FINISHES. OTHER FINISHES AVAILABLE UPON REQUEST.
- REFLECTOR - DIE-FORMED, ANODIZED, SPECULAR ALUMINUM. NEAR/FIES BEAM SPREAD PATTERN SHALL BE AS INDICATED.
- LAMP SOCKET - INTEGRAL, PRE-WIRED PORCELAIN LAMP SOCKET WITH NICKEL-PLATED SCREW AND CENTER CONTACT. HORIZONTAL OR VERTICAL AS INDICATED.
- LENS - CLEAR, TEMPERED GLASS WITH CONTINUOUS ONE-PIECE SILICONE GASKET.
- LAMPS - 250 WATT METAL HALIDE, 120 VOLTS.
- BALLAST - PREWIRED, ENCASED AND POTTED (ENCAPSULATED), CONSTANT VOLTAGE AUTOTRANSFORMER, WITH POWER FACTOR (PF) >= .90, CORE AND COIL TYPE. PROVIDE PULSE-START TYPE FOR USE WITH MH LAMPS.
- CERTIFICATION - UL LISTED AND CERTIFIED FOR WET LOCATIONS.
- MOUNTING - TRUNNION, TENON SLIPFITTER, OR FLAT SURFACE KNUCKLE AS INDICATED. PROVIDE 16/3, PRE-WIRED, WEATHERPROOF SO CORD FOR MOUNTING OTHER THAN TENON. SPECIFY LENGTH OF CORD NEEDED.
- OPTIONS - UPPER OR FULL VISOR, PHOTOCELL AND RECEPTACLE, QUARTZ RESTRIKE WITH OR WITHOUT TIME DELAY, CUSTOM COLOR AS INDICATED, AND FUSING.

**AREA FLOOD LIGHT**

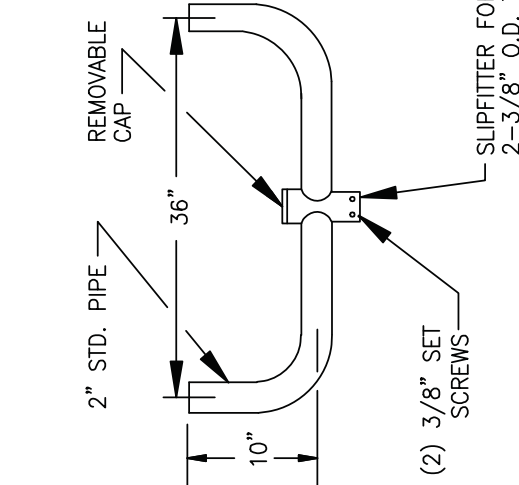
REVISED: AUGUST 2004 | LIGHTING PLATE: XL-3



TWO LUMINAIRE MOUNTING BRACKET = "A"



FOUR LUMINAIRE MOUNTING BRACKET = "B"



TWO LUMINAIRE PIPE MOUNTING BRACKET = "C"

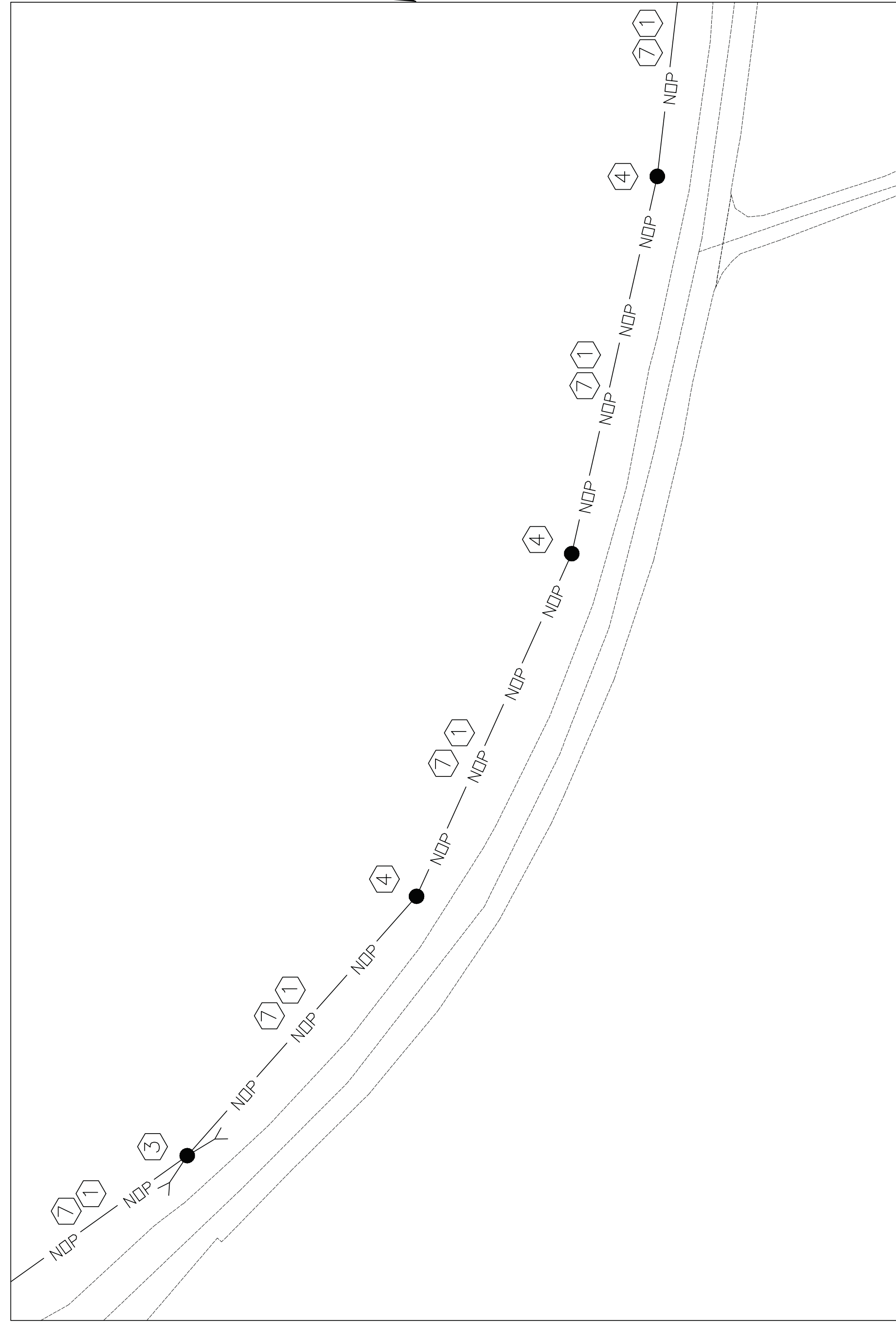
STEEL ANGLE SINGLE LUMINAIRE MOUNTING BRACKET - FOR WALL OR POLE - "D"

- NOTES:
- ALL MATERIALS SHOWN ON THIS SHEET SHALL BE HOT-DIP GALVANIZED.
  - PROVIDE BOLTS AND OTHER HARDWARE AS REQUIRED.

**LUMINAIRE MOUNTING BRACKETS**

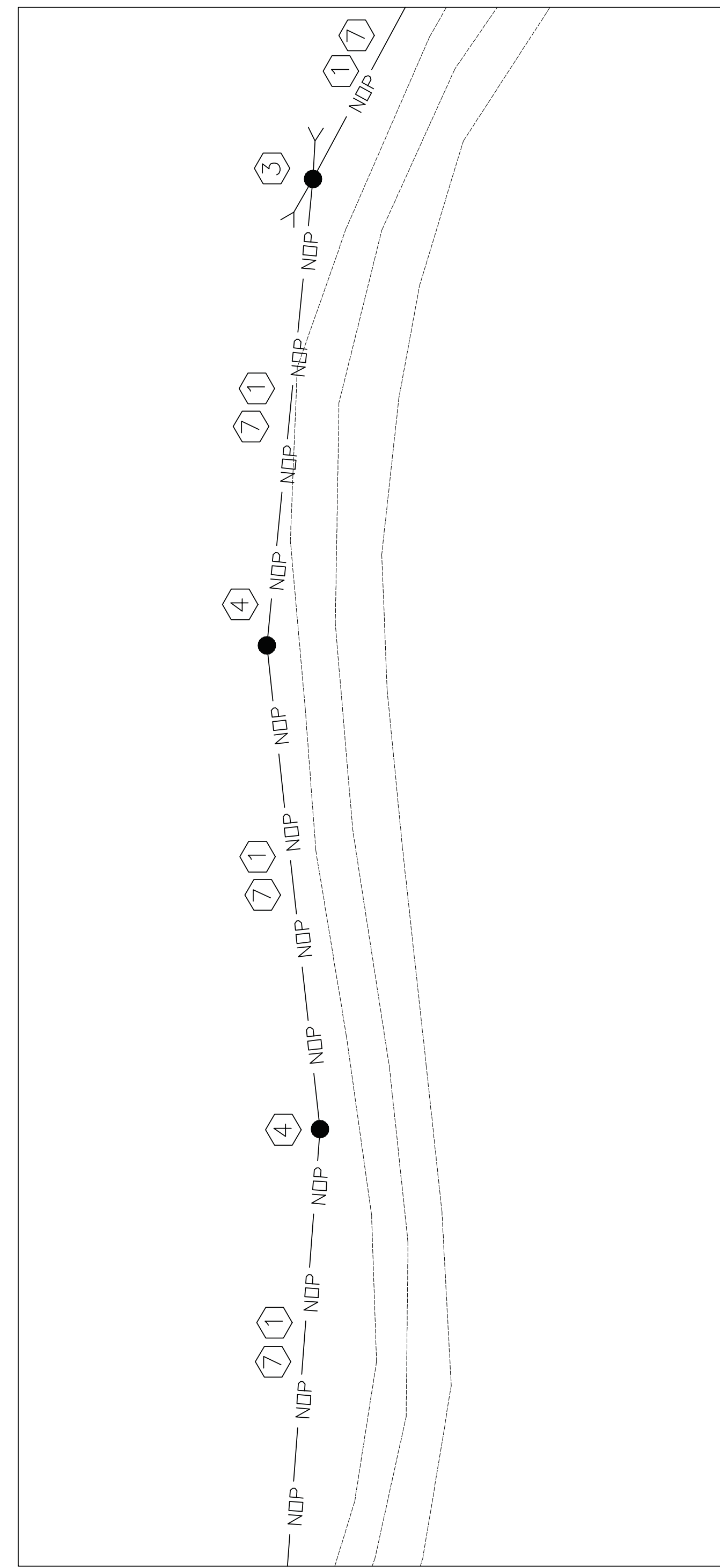
SKETCH DATE: AUGUST 2004 | STYLE: XL-21

-SEE SHEET E-1 FOR DETAILS. (TYP. FOR ALL SITE POWER PLANS THIS SHEET)



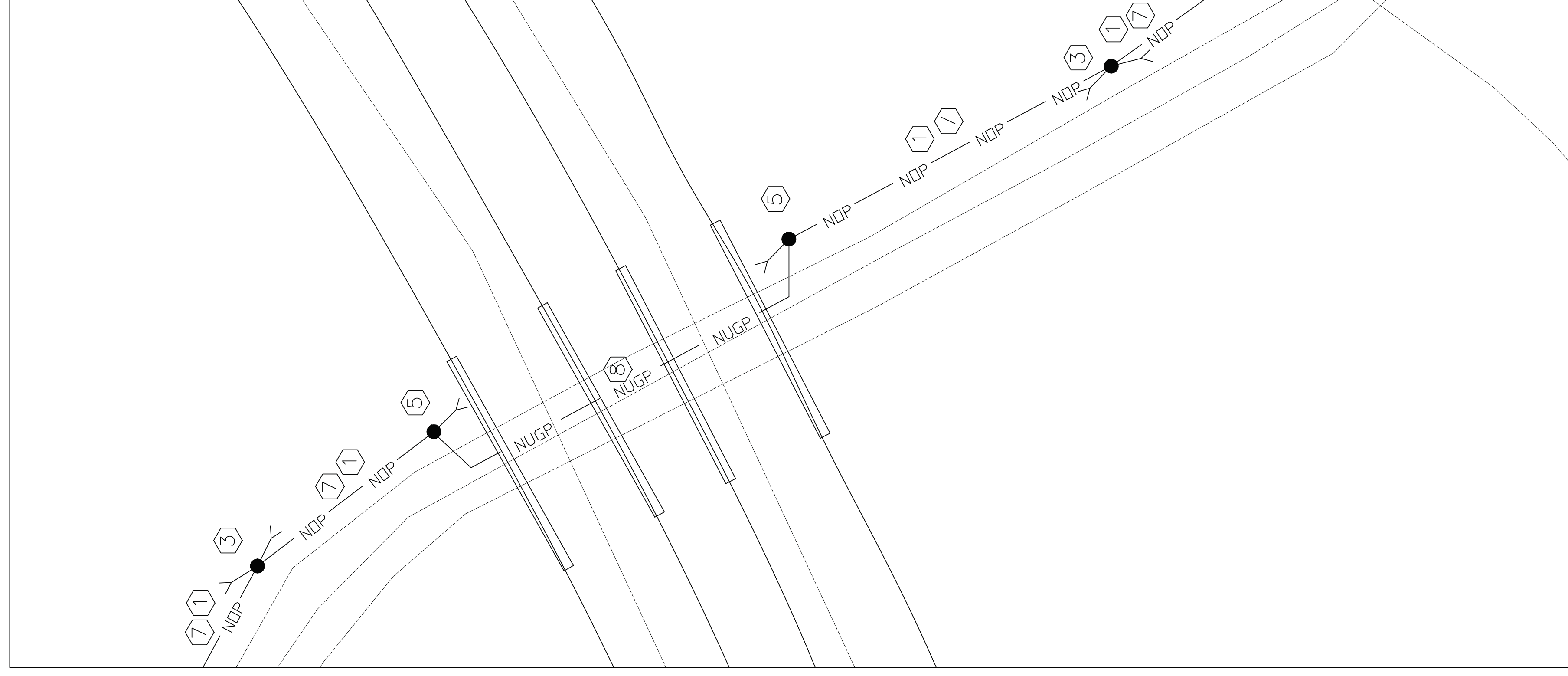
**SITE POWER PLAN: PART D**

SCALE: 1" = 40'-0"



**SITE POWER PLAN: PART F**

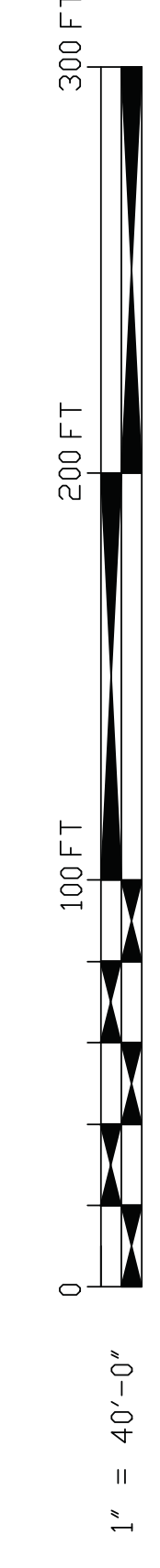
SCALE: 1" = 40'-0"



**SITE POWER PLAN: PART E**

SCALE: 1" = 40'-0"

**GRAPHIC SCALE**



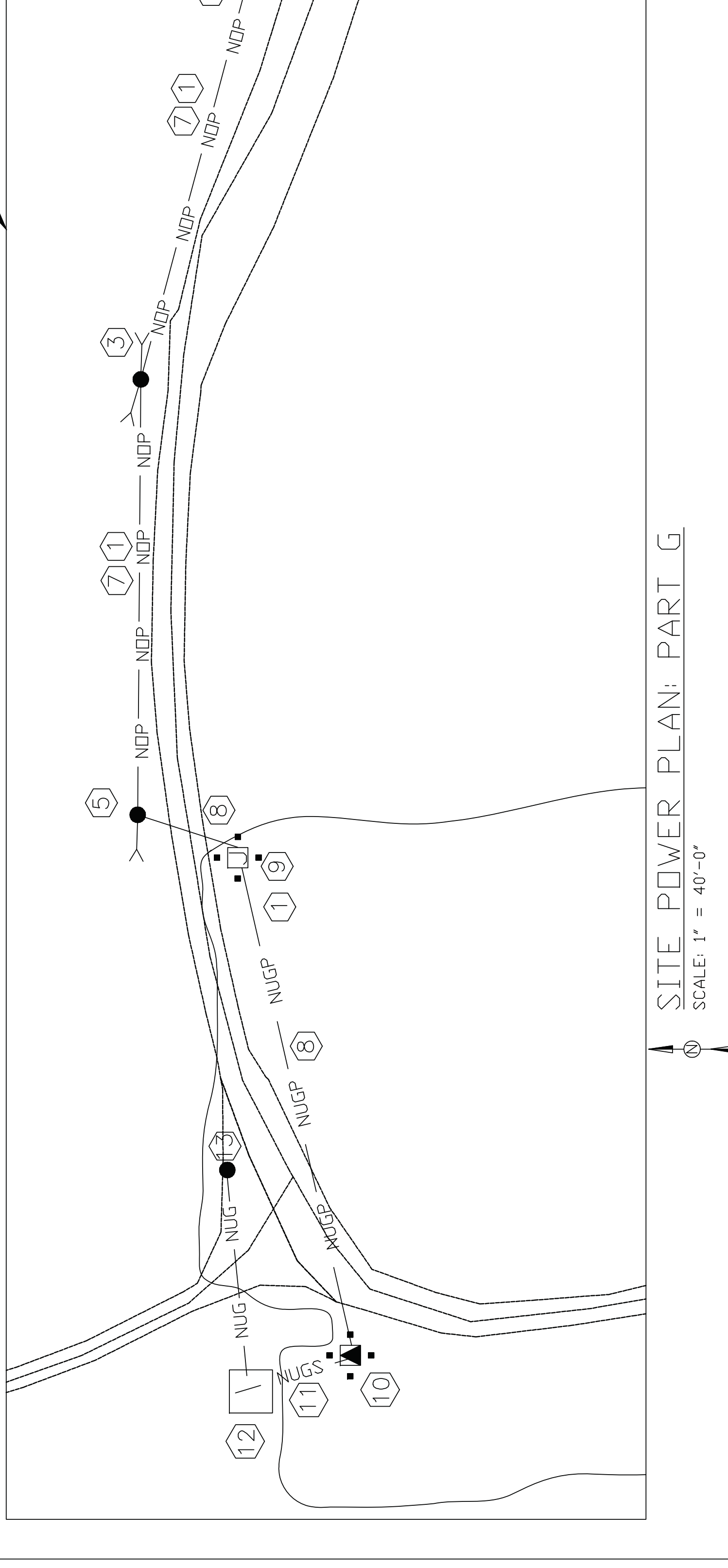
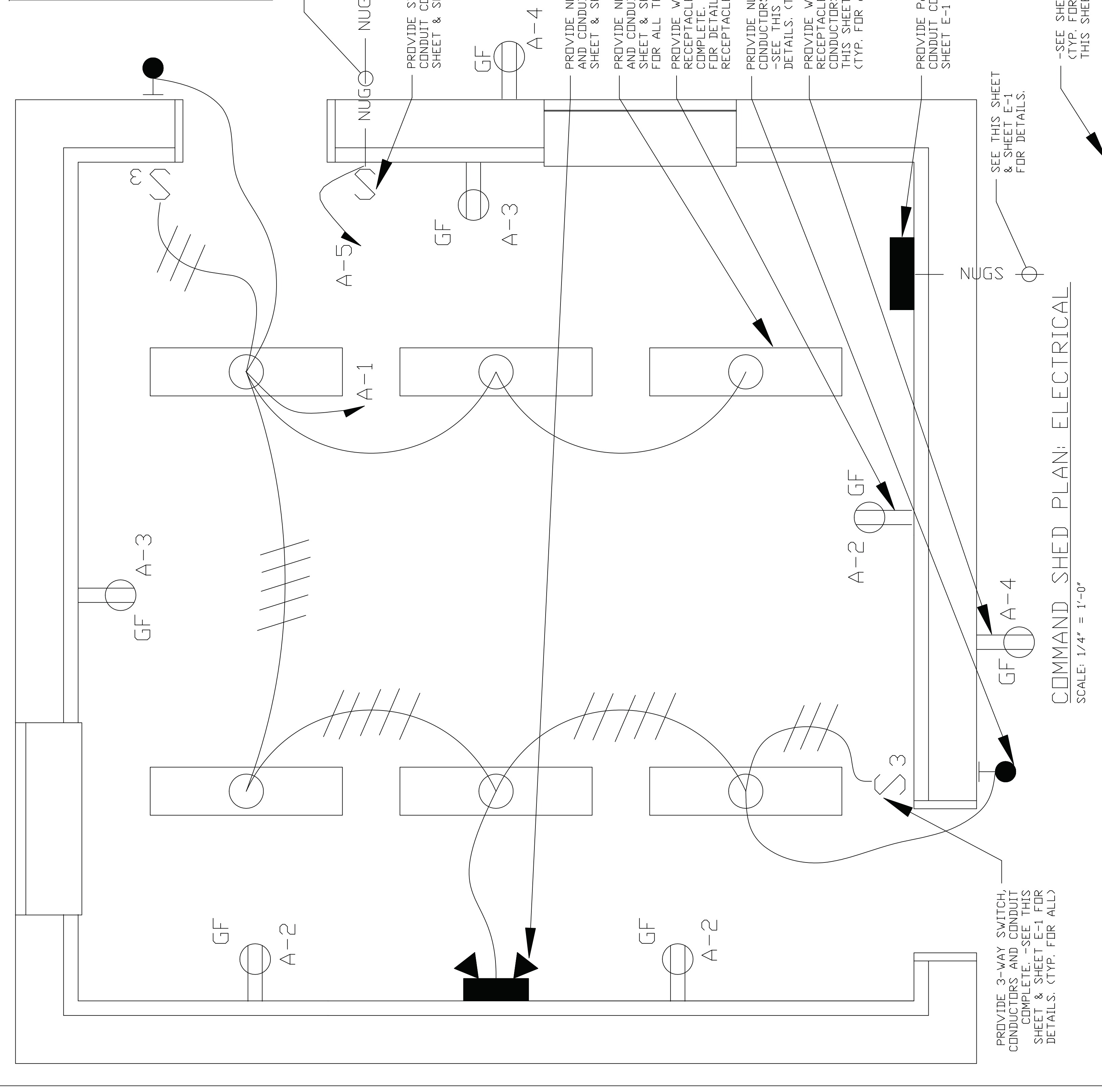
E-4

DEPARTMENT OF THE ARMY MARINE CORPS BASE CAMP LEJEUNE, NORTH CAROLINA	
DES. BY: JONES	CONSTRUCT COMMAND
REV. BY: JONES	POST SHED, LZ KIWI
CHK. BY: JONES	
SUBMITTED BY: TAVLER	
DESIGN DIR. B.R. MARSHBURN PE	SITE POWER PLANS & DETAILS
APPROVED: TMO OR ODC	DATE: 5-13-11
SATISFACTORY TO:	DATE:
	80091
	MAVAC DRAWING NO. 8008010
	CONSTR. CONTR. NO. HD085-11-B-002
	SCALE: NOTED   SPEC. 05-11-0022   SHEET 9 OF 10

# PANELBOARD 'A' SCHEDULE

LOAD SERVED	CKT BKR TRIP/POLE	WIRE SIZE	CKT NO.	WIRE SIZE	TRIP/POLE	LOAD SERVED
LIGHTS	20/1 #12	#12	2	#12	20/1	RECEPTACLES
RECEPTACLES	20/1 #12	#12	3	#12	4	EXT. RECEP.TS
EXT. POLE LIGHT	20/1 #10	#10	5		6	SPARE
SPACE			7		8	SPACE
SPACE			9		10	SPACE
SPACE			11		12	SPACE

**NEW PANEL 'A'**  
120V/240 VOLT, 125 AMP PANEL W/100A MCB, 3-WIRE, SINGLE PHASE, 10-KV RATING, NEMA 1 ENCLOSURE



SYM	DATE	APPROVED

**FIBERGLASS HOUSING DAMP/WET LOCATION FLUORESCENT**

REVISED: AUGUST 2004 LIGHTING PLATE: NL-19

EFFICIENCY - 76%

FOR	CU
1	78
2	26
3	58
4	51

LUMINAIRE REQUIREMENTS:

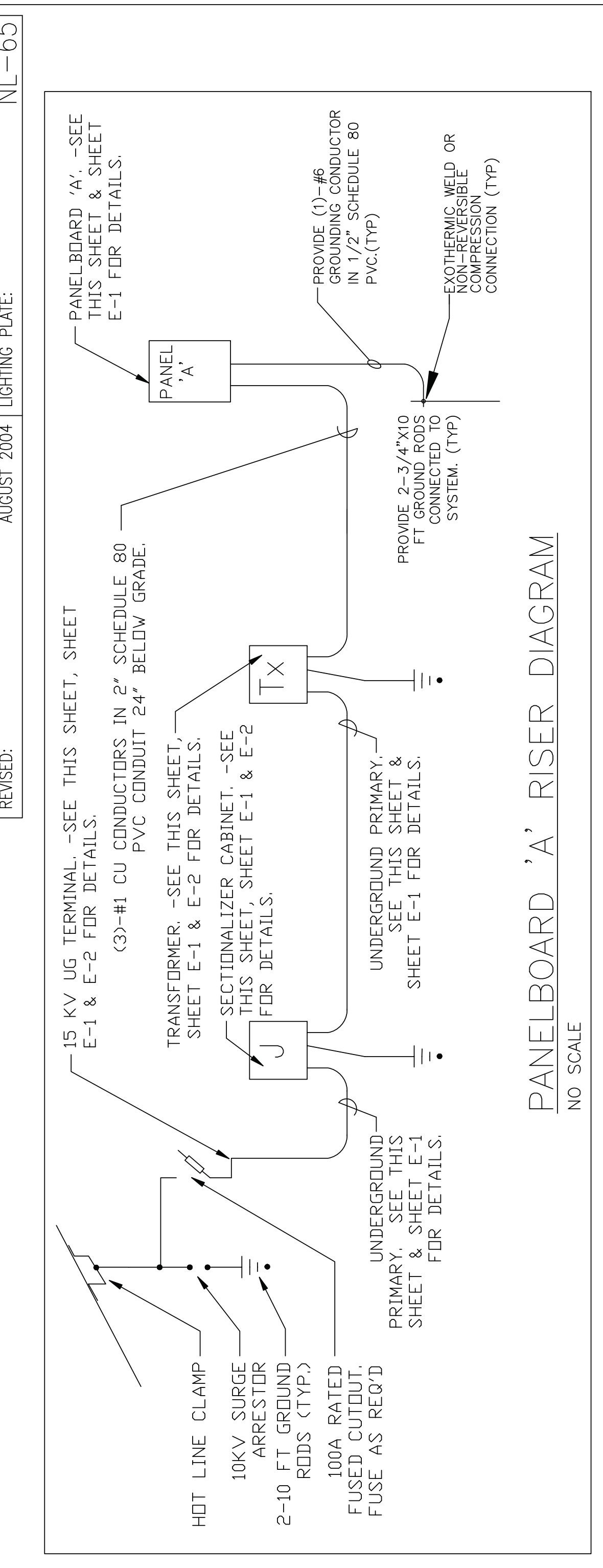
- HOUSING - ONE-PIECE IMPACT-RESISTANT, FIBERGLASS REINFORCED POLYESTER WITH ENCLOSED COLD-ROLLED STEEL WIREWAY.
- FINISH - STEEL REFLECTOR WITH MULTI-STAGE PHOSPHATE BONDING TREATMENT FINISHED WITH HIGH REFLECTANCE (MINIMUM 85%), BAKED WHITE ENAMEL FINISH.
- LENS - 100% CLEAR ACRYLIC OR OPTICAL DIFFUSER, STIPPLED INTERIOR SURFACES AND SMOOTH EXTERIOR, CLOSED CELL NEOPRENE GASKET WITH CAPTIVE NONMETALLIC, SNAP ACTION DAM LATCHES TO SECURE LENS TO HOUSING.
- LAMPS - LINEAR FLUORESCENT 2-32 WATT T8.
- BALLAST - GLASS P, THERMALLY-PROTECTED, HIGH POWER FACTOR ( $\geq 95$ ), ELECTRONIC TYPE WITH SOUND RATING A.
- CERTIFICATION - UL LISTED AND LABELED, SUITABLE FOR DAMP OR WET LOCATIONS.
- PHOTOMETRICS - MINIMUM VALUE OF COEFFICIENT OF UTILIZATION (CU) AND EFFICIENCY, GIVEN INTERIOR CAVITY REFLECTANCES OF 80-50-20.

**INDUSTRIAL EMERGENCY LIGHTING UNIT**

REVISED: AUGUST 2004 LIGHTING PLATE: NL-65

LUMINAIRE REQUIREMENTS:

- HOUSING - HEAVY-GAUGE STEEL WITH BAKED-ON DARK BROWN ENAMEL FINISH. ACCESS INTO TOP OF FIXTURE BY FULL PIANO HINGE COVER.
- INTERNAL COMPONENTS - FULLY AUTOMATIC, SOLID STATE, CONSTANT VOLTAGE, CURRENT-LIMITED BATTERY CHARGER; MAINTENANCE-FREE LEAD-ACID BATTERY; AND BUILT-IN OVERLOAD PROTECTION.
- FACEPLATE INDICATORS - LED AC-ON INDICATOR AND INTEGRAL TEST SWITCH.
- LAMP HEADS - UL FLAME RATED THERMOPLASTIC; FULLY ADJUSTABLE HORIZONTALLY AND VERTICALLY. SEALED BEAM, PAR 36 HALOGEN LAMPS SHALL BE 12 WATS.
- MOUNTING - DIRECTLY TO WALL USING MOUNTING HOLES IN REAR OF CABINET, ACCESSORY WALL BRACKETS, OR MOUNTING SHEET.
- CERTIFICATION - UL LISTED AND LABELED, COMPLIES WITH UL 924 AND NFPA 101 REQUIREMENTS. LISTED FOR DAMP LOCATIONS.
- OPTIONS - VOLTMETER, AMMETER, THREE-CONDUCTOR CORD SET, OR WIRE GUARD.



**GRAPHIC SCALE**

1/4" = 1'-0"  
1" = 40'-0"

0 1 2 3 4 5 10  
0 100 FT 200 FT 300 FT

**REVISIONS**

SYM	DATE	APPROVED

**COMMAND SHED PLAN: ELECTRICAL**  
SCALE: 1/4" = 1'-0"

**SITE POWER PLAN: PART G**  
SCALE: 1" = 40'-0"

DEPARTMENT OF THE ARMY WALK FACILITIES ENGINEERING COMMAND  
**MARINE CORPS BASE**  
CAMP LEJEUNE, NORTH CAROLINA

DES. V. JONES  
REV. J. JONES  
CHK. V. JONES  
SUBMITTED BY: TOWLER  
DESIGN DIR. B.R. WASHINGTON PE  
APPROVED: TMO OR OMC

CONSTRUCT COMMAND POST SHED, LZ KIW  
SITE POWER PLAN, COMMAND SHED PLAN: ELECTRICAL & DETAILS

DATE: 5-13-11  
SIZE CODE IDENT: NO  
MAY/AC DRAWING NO: 8008011  
F 80091  
CONST. CONTR. NO: NDV085-11-P-002

SCALE: NOTED | SPEC. 05-11-0022 | SHEET 10 OF 10