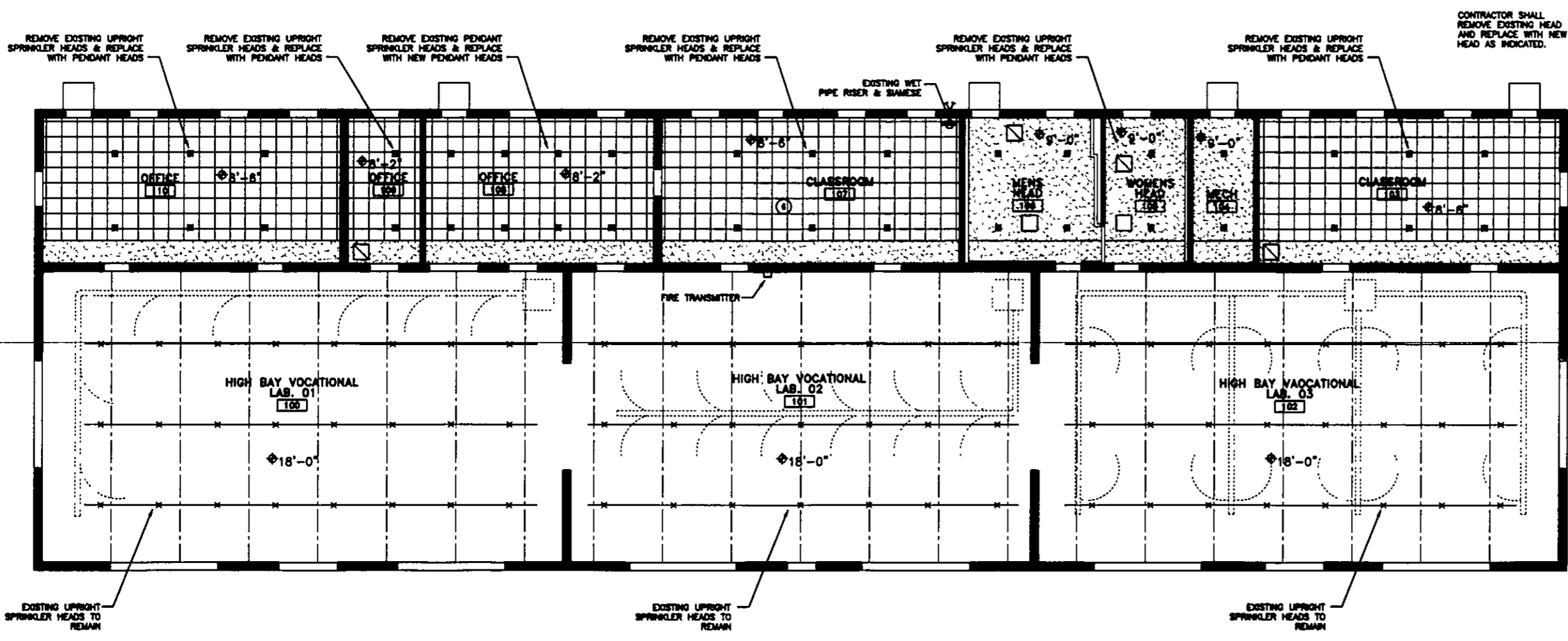


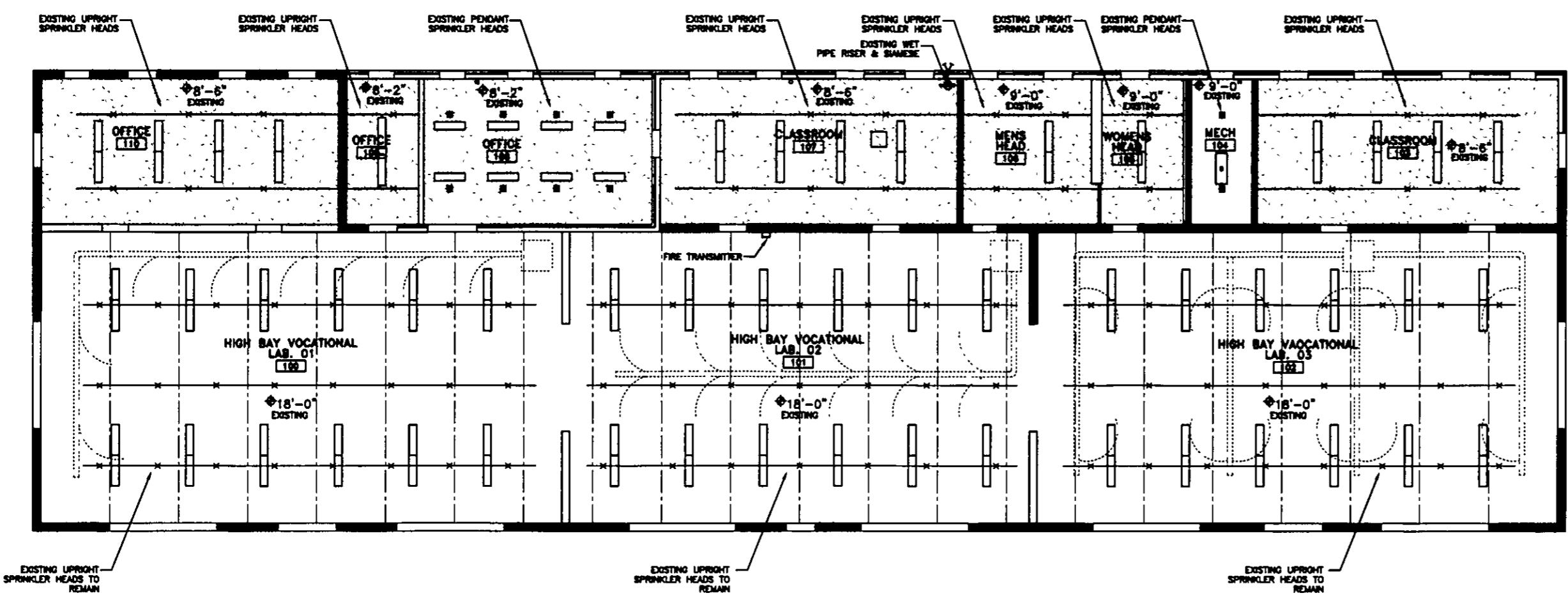
SYM	REVISIONS	DATE APPROVED

- GENERAL NOTES (FOR THIS SHEET ONLY)**
1. SPRINKLER SYSTEM SHOWN IS EXISTING. HEAD LOCATION AND PIPE ROUTING IS APPROXIMATE AND SHOULD BE VERIFIED. CONTRACTOR SHALL MODIFY EXISTING PIPING TO ACCOMMODATE NEW CEILING. REPLACE SPRINKLER HEAD WITH AN UPRIGHT OR PENDANT SPRINKLER TO MATCH EXISTING OR RENOVATED CEILING. DO NOT REUSE SPRINKLER HEADS. FOR BID PURPOSES, CONTRACTOR SHALL ASSUME (3) FEET OF NEW PIPING PER SPRINKLER HEAD.
 2. EXISTING SPRINKLER SYSTEM, INCLUDING ANY NFPA 13, 2010 EDITION, UFC 3-800-01 AND 3-800-10N.
 3. CONTRACTOR SHALL FIELD VERIFY EXISTING CONDITIONS THAT MAY AFFECT THE SYSTEM INSTALLATION PRIOR TO BEGINNING WORK.
 4. AN ACOUSTICAL GRID CEILING IS BEING INSTALLED AS INDICATED. PROVIDE NEW PENDANT SPRINKLERS AND ESCUTCHEONS WHERE NEW ACOUSTICAL GRID CEILINGS ARE INSTALLED.
 5. NEW SPRINKLER HEADS SHALL BE COVERED/PROTECTED DURING RENOVATION INCLUDING PAINTING. COVER/PROTECTION SHALL BE REMOVED PRIOR TO COMPLETION OF RENOVATION.
 6. EXISTING SPRINKLERS OBSTRUCTED BY LIGHTS, STRUCTURAL MEMBERS, STORAGE, ETC. SHALL BE CORRECTED.
 7. THE NEW CEILING GRID CONFIGURATION, HEIGHT AND LOCATION LIGHTS AND HVAC GRILLS IS INDICATED AS SHOWN, SEE ELECTRICAL AND MECHANICAL FOR ADDITIONAL NOTES.
 8. SPRINKLER HEAD DENSITIES SHALL BE IN ACCORDANCE WITH NFPA 13 FOR LIGHT HAZARD FOR OFFICES, CORRIDORS, TOILET ROOMS AND CLASSROOMS. MECHANICAL ROOMS AND SIMILAR SHALL BE IN ACCORDANCE WITH NFPA 13 FOR ORDINARY HAZARD.
 9. SPRINKLER CONTRACTOR SHALL OBTAIN A HYDRANT FLOW TEST FOR HYDRAULIC CALCULATIONS. HYDRAULIC CALCULATIONS SHALL BE IN ACCORDANCE WITH UFC 3-800-01 THAT INCLUDES A DESIGN AREA OF 3000 S.F. WITH ALLOWANCES FOR SLOPED CEILINGS AND REDUCTIONS FOR QUICK RESPONSE SPRINKLERS. HOSE ALLOWANCES SHALL BE PER UFC 3-800-01.
 10. SPRINKLER HEAD LOCATIONS SHALL BE LOCATED IN THE CENTER OF TILE, AND IN A CONSISTENT PATTERN.
 11. ALL CALCULATIONS SHALL BE IN ACCORDANCE WITH UFC 3-800-01 AND UFC 3-800-10N. THE MINIMUM DESIGN AREA SHALL BE 3,000 SQUARE FEET. REDUCTIONS FOR THE USE OF QUICK RESPONSE SPRINKLERS SHALL APPLY PER NFPA 13, BUT IN NO CASE SHALL BE THE DESIGN AREA BE LESS THAN 1800 SQUARE FEET.



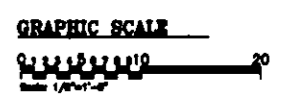
B RENOVATED SPRINKLER PLAN 1/8"=1'-0"

A SITE INVESTIGATION DID NOT LOCATE A BACKFLOW PREVENTER FOR THE EXISTING FIRE SUPPRESSION SYSTEM.



- LEGEND**
- ◁ 2-1/2" SIAMESE FIRE DEPARTMENT CONNECTION
 - + UPRIGHT SPRINKLER
 - PENDANT SPRINKLER
 - WET VALVE

A EXISTING SPRINKLER PLAN 1/8"=1'-0"

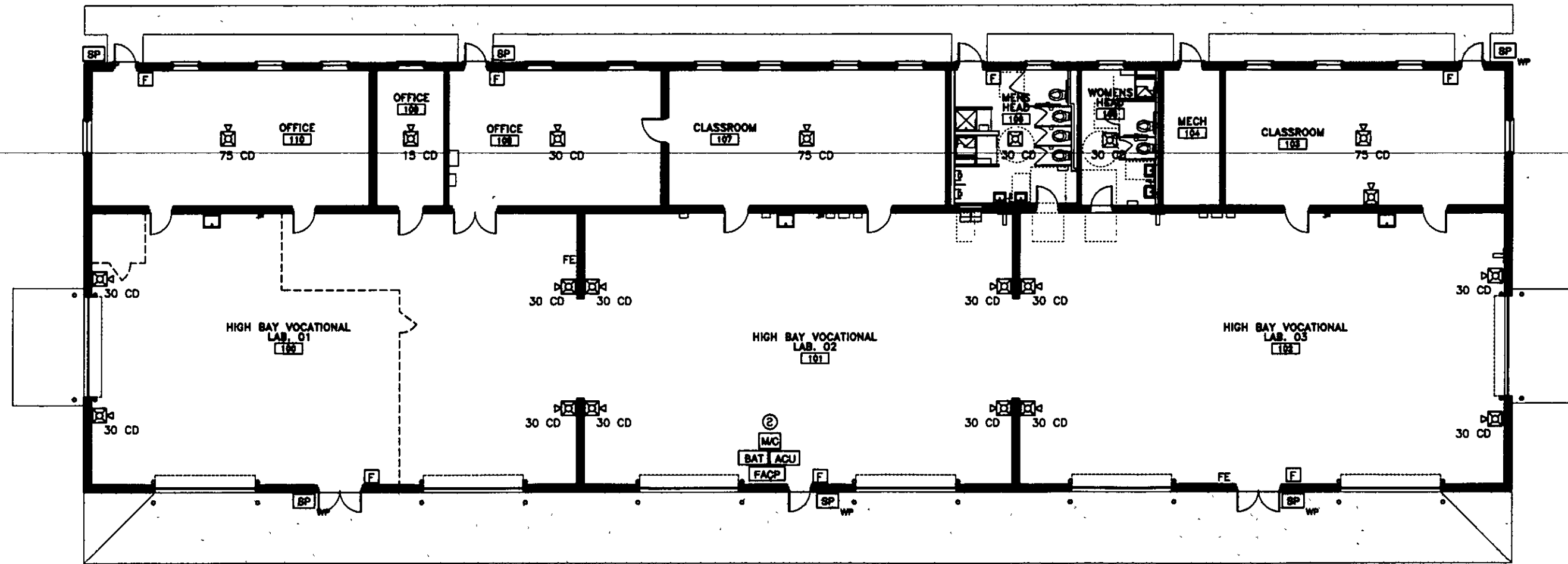


FP-1

The Walker Group Architecture, Inc. WALKER GROUP ARCHITECTURE 100 West 9th, New York, NY 10011 212.250.8700 (phone) 212.250.8700 (fax)		DEPARTMENT OF THE NAVY MARINE CORPS BASE CAMP LEJEUNE, NORTH CAROLINA	
DES. C. WALKER CH. B. WALKER SUBMITTED BY: J. WALKER DESIGN DR. B.R. MARSHBURN	APPLIED INSTRUCTION BUILDING NO. BB-50, COURTHOUSE BAY SPRINKLER PLAN		
APPROVED: PWD OR CHC DATE: 8/2/2011 SATISFACTORY TO:	NAVFAC DRAWING NO. 60009302 CONST. CONTR. NO. W40085-11-B-0117	SIZE CODE IDENT. NO. F	SCALE: NOTED SPEC. 11-0117 SHEET 3 OF 28



SYM	REVISIONS	DATE APPROVED



GENERAL NOTES

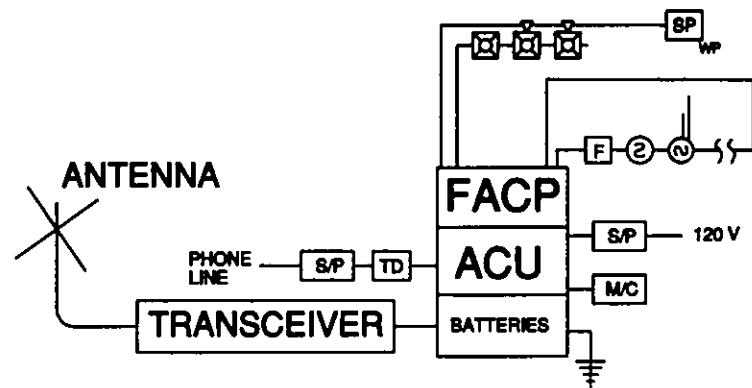
1. DEVICE LOCATIONS ARE FOR INFORMATION ONLY. LOCATIONS TO BE VERIFIED BY THE CONTRACTOR. FINAL INSTALLATION AND DESIGN SHALL BE IN ACCORDANCE WITH NFPA 72 AND UFC 3-800-01.
2. STROBE CANDELA RATING IS TO BE IN ACCORDANCE WITH NFPA 72.
3. ALL NEW CONDUIT, WIRE AND CABLES SHALL BE CONCEALED IN WALLS, CEILING SPACES, ELECTRICAL SHAFTS OR CLOSETS. NEW CONDUIT MAY BE EXPOSED IN UNFINISHED AREAS. PAINTED SURFACE WIRE MOLD MAY NOT BE USED IN FINISHED AREAS.
4. TRANSCEIVER TO BE PROVIDED BY OTHERS
5. SPEAKER/STROBE SHALL BE MARKED "ALERT", AND SHOULD BE CLEAR.

LEGEND

- [F] MANUAL FIRE ALARM STATION
- FE FIRE EXTINGUISHER
- [S] SPEAKER-STROBE
- [S] STROBE
- [SD] SMOKE DETECTOR
- [SD] IN-DUCT SMOKE DETECTOR
- [SP] SPEAKER
- [SP WP] WEATHERPROOF SPEAKER
- [FACP] FIRE ALARM CONTROL PANEL
- [ACU] AUTONOMOUS CONTROL UNIT
- [TD] TELEPHONE DIALER
- [BAT] BATTERIES
- [M/C] MICROPHONE
- [S/P] SURGE PROTECTOR
- [EOL] END OF LINE RESISTOR

A FIRE ALARM FLOOR PLAN
1/8"=1'-0"

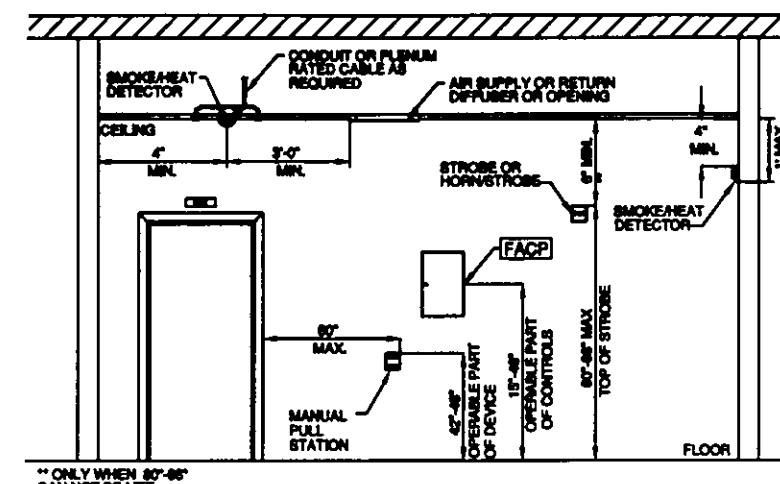
1 FIRE ALARM FLOOR PLAN
1/4"=1'-0"



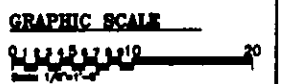
2 RISER DIAGRAM
SEE FLOOR PLAN FOR NUMBER AND LOCATION OF RISING AND NOTIFICATION DEVICES
NTS

ACTION TO BE INITIATED	ACTION TO BE INITIATED										
	DISPLAY MESSAGE ON FACP/FAA DISPLAY	ACTIVATE AUDIBLE NOTIFICATION DEVICES	ACTIVATE VISUAL NOTIFICATION DEVICES	STOP AIR HANDLING UNITS	SEND ALARM SIGNAL TO MONITORING STATION	SEND TROUBLE SIGNAL TO MONITORING STATION	SEND SUPERVISORY SIGNAL TO MONITORING STATION	OVERRIDE FIRE ALARM MESSAGES			
MANUAL PULL STATION	X	X	X		X						
GENERAL SMOKE DETECTOR	X	X	X		X						
FACP TROUBLE	X					X					
IN-DUCT DETECTOR			X	X	X						
MASS NOTIFICATION SYSTEM	X	X	X								X
LIVE VOICE MESSAGE	X	X	X								X
TAMPER SWITCH						X					
SPRINKLER FLOW SWITCH					X						

3 OPERATIONAL MATRIX
NTS



4 MOUNTING HEIGHT DETAIL
NTS



FA-1

The Walker Group Architecture, Inc. WALKER GROUP ARCHITECTURE
 302 SHELBY PHOTOS
 919.485.8800
 302 SHELBY PHOTOS

REPARTMENT OF THE NAVY
MARINE CORPS BASE
 CAMP LEJEUNE, NORTH CAROLINA

DES. C. WALKER
 DR. C. WALKER
 CH. B. WALKER
 SUBMITTED BY: J. WALKER
 DESIGN DR. B.R. MARSHBURN

APPLIED INSTRUCTION BUILDING
 NO. BB-50, COURTHOUSE BAY
FIRE ALARM FLOOR PLAN

APPROVED: PWO OR OICC DATE 8/8/2011
 SIZE CODE IDENT. NO. F
 NAVTAC DRAWING NO. 80009303
 CONST. CONTR. NO. N40085-11-B-0117

SATISFACTORY TO: DATE
 SCALE: NOTED SPEC. 11-0117 SHEET 4 OF 28

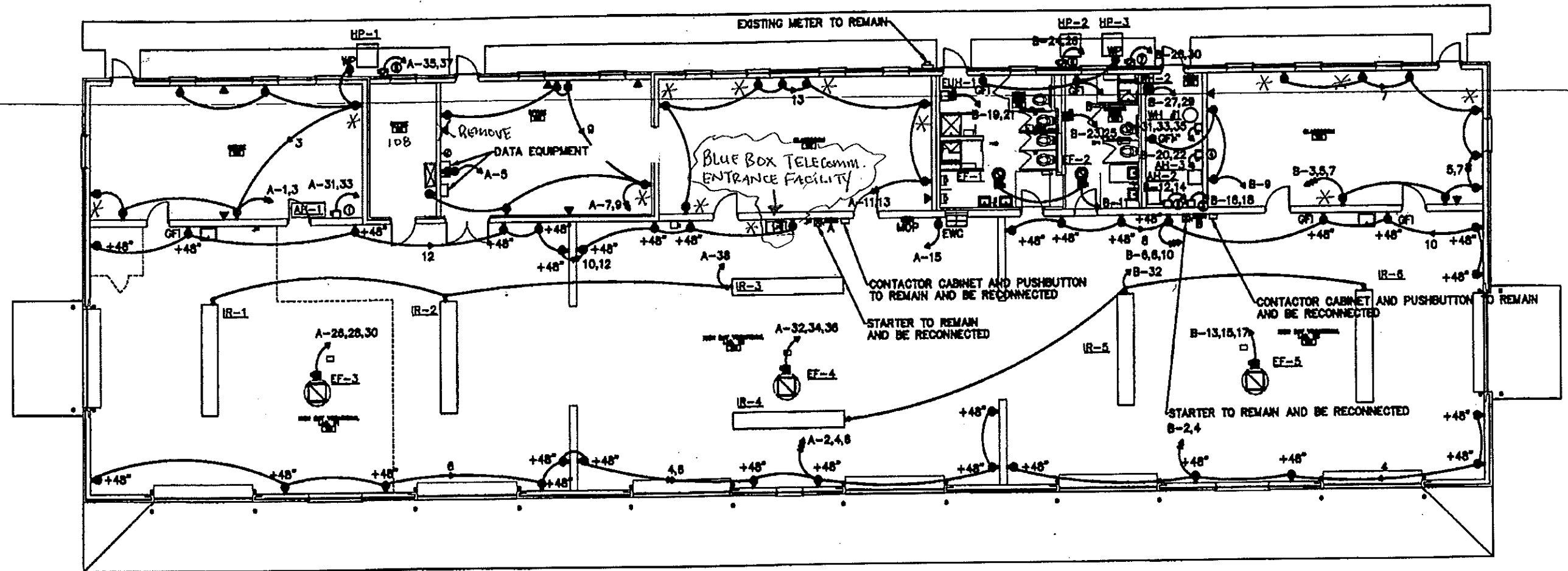
SKETCH FOR ADDITIONAL TELECOMMUNICATION OUTLETS & NEW WALL MOUNTED TELECOMM RACK

* ADDITIONAL TELECOMMUNICATION OUTLETS

☒ NEW WALL MOUNTED TELECOMMUNICATIONS RACK

X REMOVE OUTLET

SYM	RE



EQUIPMENT CONNECTION SCHEDULE

SYM.	EQUIPMENT	LOAD	VOLT/PHASE	DISCONNECT				CONDUCTORS	RACEWAY		NOTES
				TYPE	RATING	POLES	TRIP/FUSE ENCL.		TYPE	SIZE	
①	AH-1	7.2KW + 1/3HP	208/1	NFDS	60	2	---	1	2# 2# 1#10G	FMC	3/4"
②	AH-2A	7.2KW + 1HP	208/1	NFDS	60	2	---	1	2# 2# 1#10G	FMC	3/4"
③	AH-2B	3.6KW	208/1	NFDS	30	2	---	1	2#10, 1#10G	FMC	1/2"
④	AH-3	7.2KW + 1/3HP	208/1	NFDS	60	2	---	1	2# 2# 1#10G	FMC	3/4"
⑤	HP-1	11.1RLA + .7FLA	208/1	FDS	30	2	25	3R	2#10, 1#10G	LFMC	1/2"
⑥	HP-2	26.4RLA + .9FLA	208/1	FDS	60	2	60	3R	2# 2# 1#10G	LFMC	3/4"
⑦	HP-3	11.1RLA + .7FLA	208/1	FDS	30	2	25	3R	2#10, 1#10G	LFMC	1/2"

1 FLOOR PLAN - POWER
SCALE: 1/8"=1'-0"