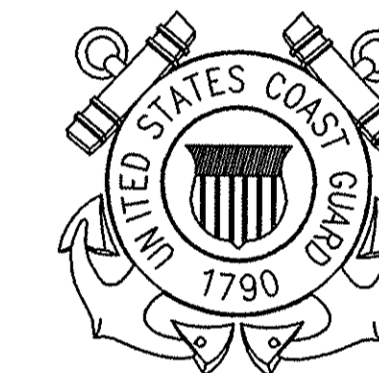


CONSULTANTS



U. S. COAST GUARD
CIVIL ENGINEERING UNIT
CLEVELAND



USCG, CEU CLEVELAND
1240 EAST 9TH STREET
CLEVELAND, OH 44199-2060

MARK	DATE	DESCRIPTION

A/E PROJECT NO: OK07530-005
CAD FILE NAME: C6657S01
DESIGNED BY: K. HINCHEY
DRAWN BY: I. SOLIS
EDITED BY:
CHECKED BY: B. CUPP

SCALE: AS SHOWN PLOT SCALE: 1" = 8'-0"

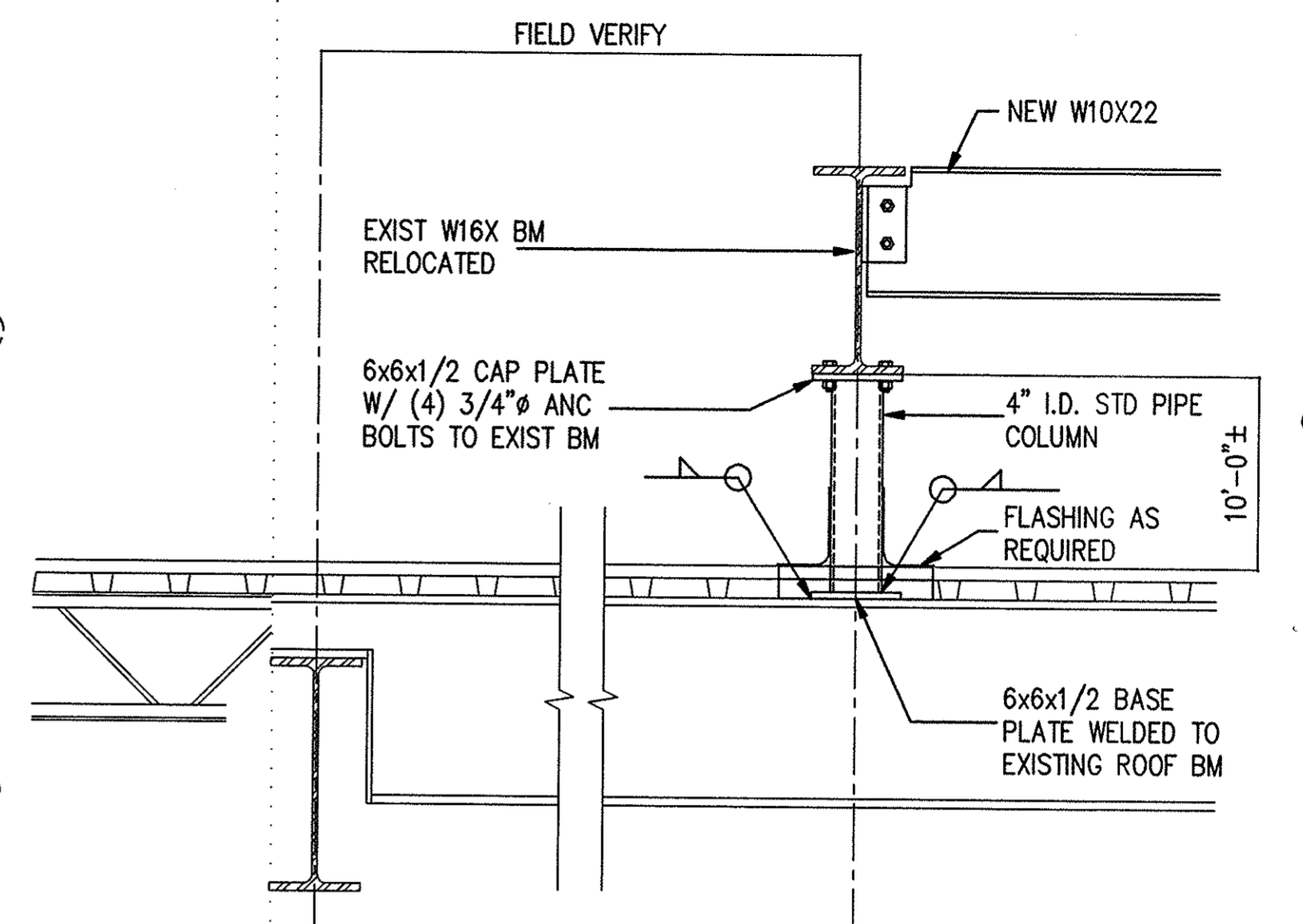
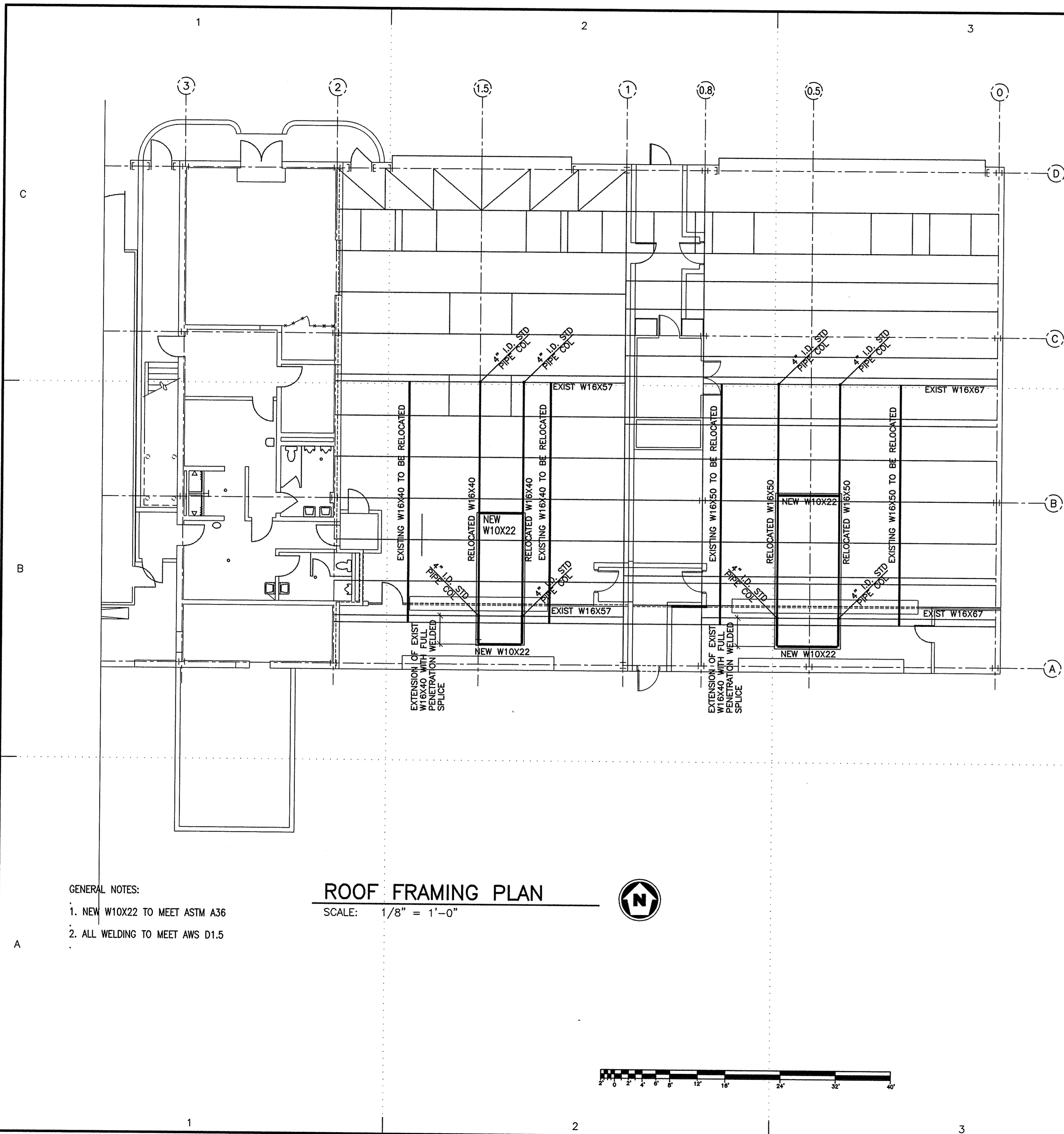
SHEET TITLE
MECHANICAL REHABILITATION
OF SANDBLAST BUILDING
PORTSMOUTH VIRGINIA

STRUCTURAL
ROOF FRAMING PLAN

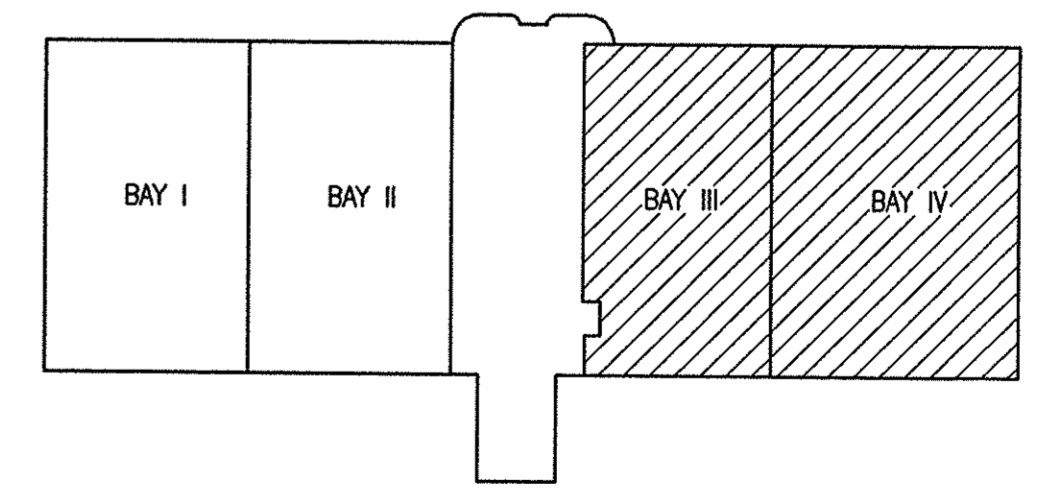
REVIEWED BY: B. VANKAR	REVIEWED BY: G. PLAZEK	REVIEWED BY: D. MONTZ
PROJECT ENG.	BRANCH CHIEF	TECH. DIRECTOR

R.E. MOBLEY, CDR APPROVING OFFICER	06/08/01 DATE
---------------------------------------	------------------

PROJECT NUMBER 32-C9990	DRAWING NUMBER 6657-D
DISCIPLINE/SHT NO S/01	SHEET 28 OF 28



DETAIL AT NEW MECH PLATFORM
SCALE: 1" = 1'-0"



KEY PLAN
SCALE:

- GENERAL NOTES:
1. NEW W10X22 TO MEET ASTM A36
 2. ALL WELDING TO MEET AWS D1.5

ROOF FRAMING PLAN
SCALE: 1/8" = 1'-0"

