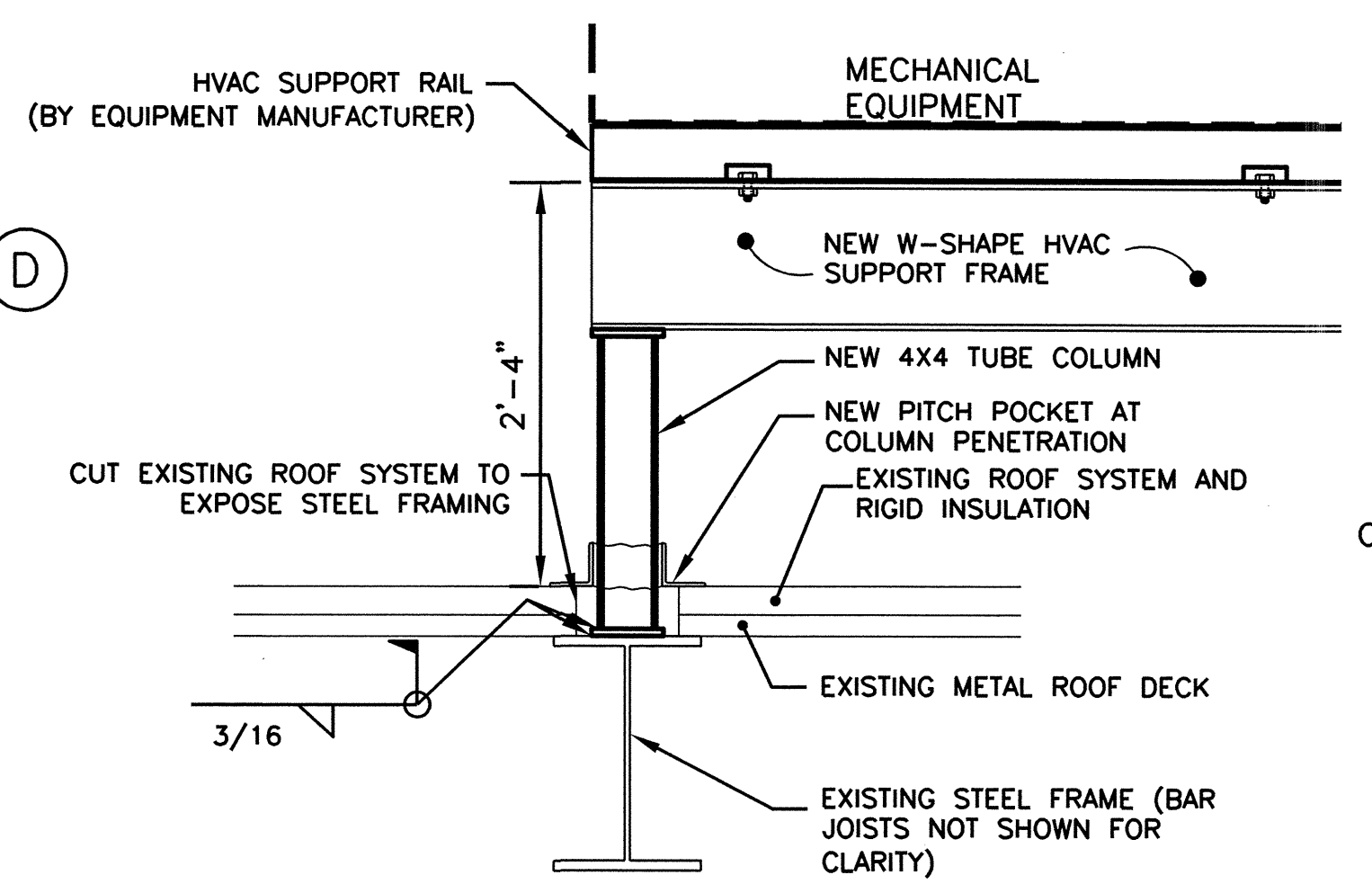


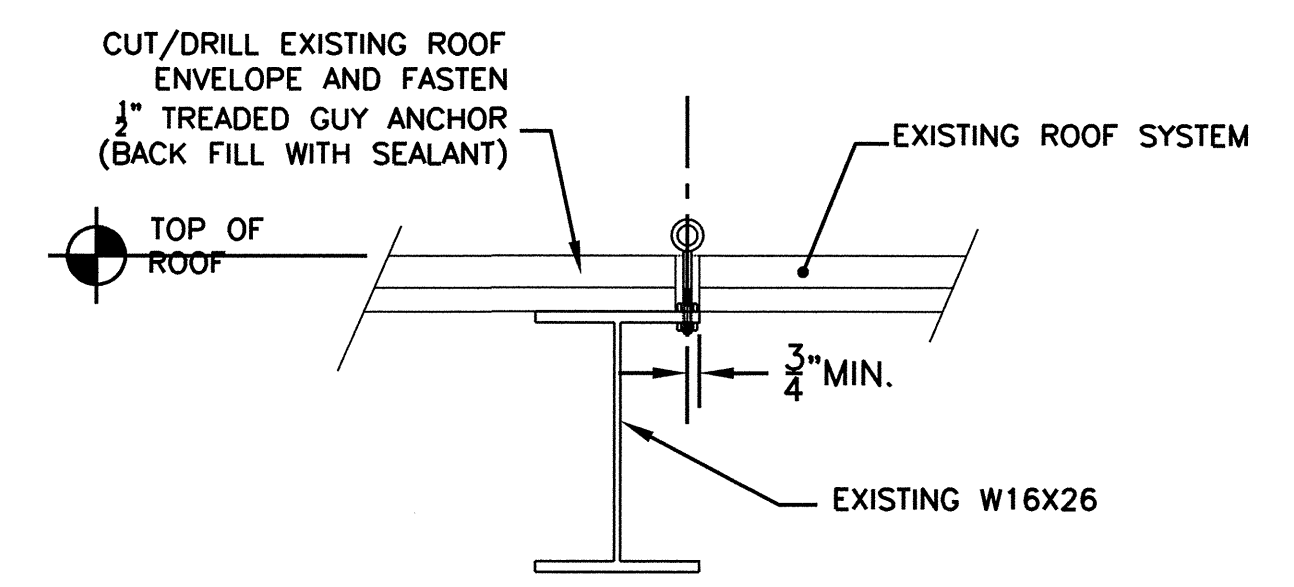
**FLOOR PLAN BAYS III AND IV**  
SCALE: 3/16"=1'-0"

- KEYNOTES**
- PAINT BOOTH INSTALLATION INFORMATION:  
INSTALL (3) GFS PRESSURIZED CROSSDRAFT PAINT SPRAY BOOTH WITH TEMPERATURE AND HUMIDITY CONTROL. INSTALLATION FOR EACH PAINT BOOTH PER GFS DRAWING AS NOTED:  
• PAINT BOOTH #3 - DWG# 91400A-01  
• PAINT BOOTH #4 - DWG# 91400B-01  
• PAINT BOOTH #5 - DWG# 91400C-01
  - COORDINATE PENETRATIONS, HVAC EQUIPMENT SUPPORT, AND GUY ANCHOR LOCATIONS WITH GFS DRAWINGS.

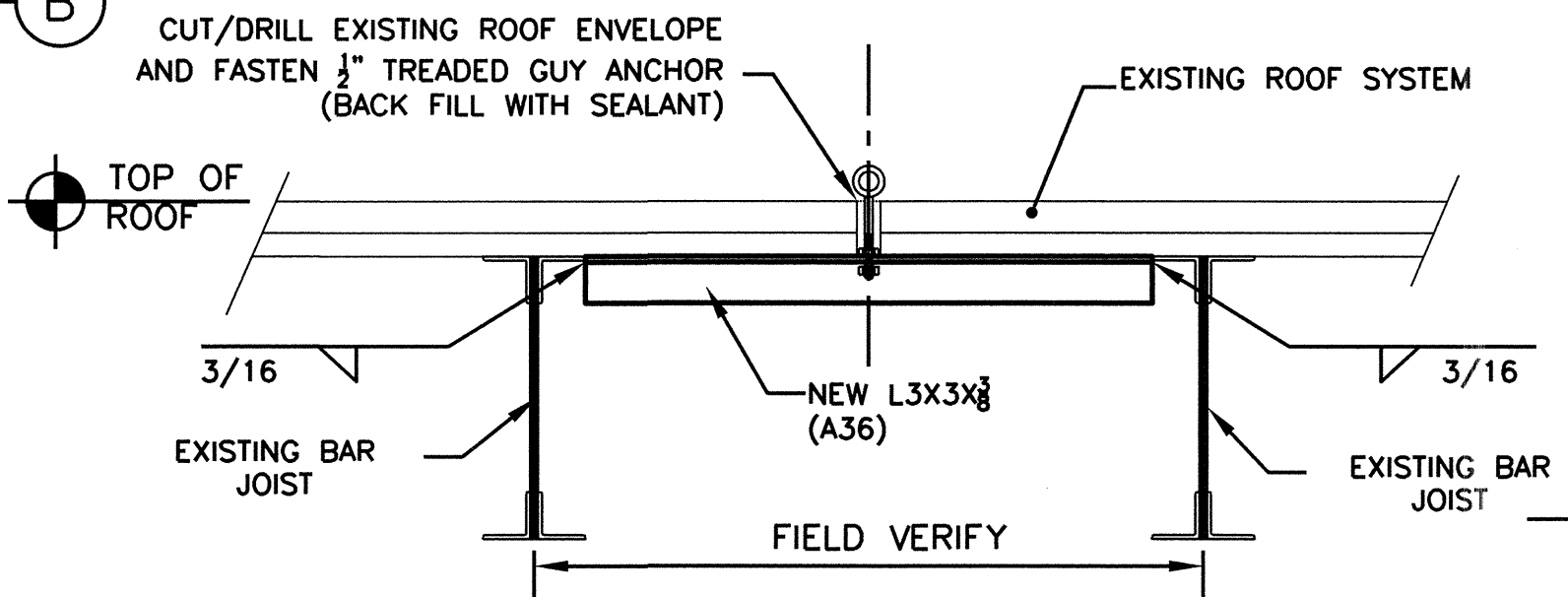
- LEGEND**
- NEW STEEL BEAM (A992 GRADE 50)
  - NEW HSS 4X4X1/4 STEEL POST
  - NEW 1/2" EYEBOLT GUY ANCHOR (A325) COORDINATE EXACT LOCATION WITH GFS



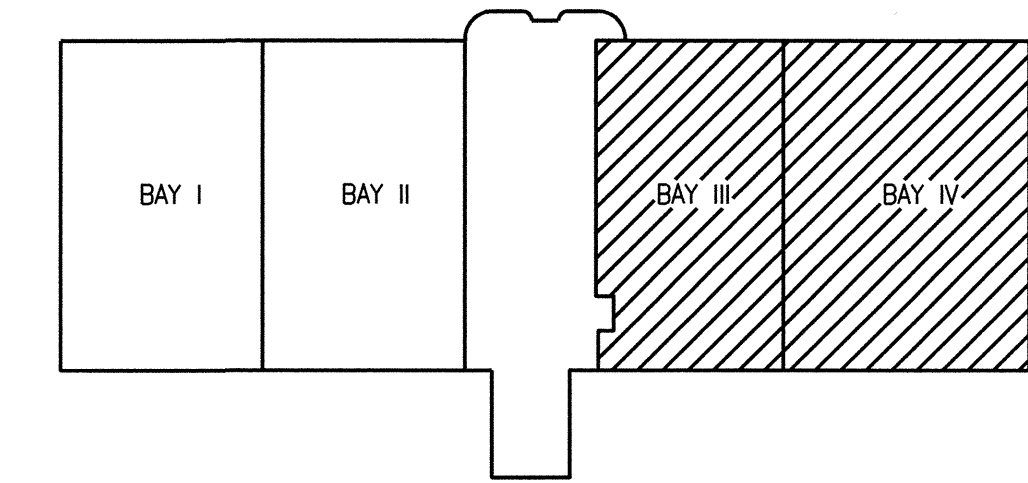
**DETAIL 2 - TYPICAL COLUMN INSTALLATION**  
SCALE: 1"=1'-0"



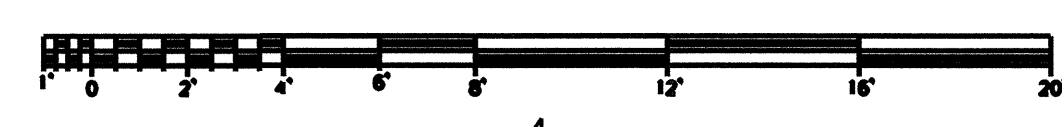
**DETAIL 3 - GUY ANCHOR AT EXISTING BEAM B**  
SCALE: 1"=1'-0"



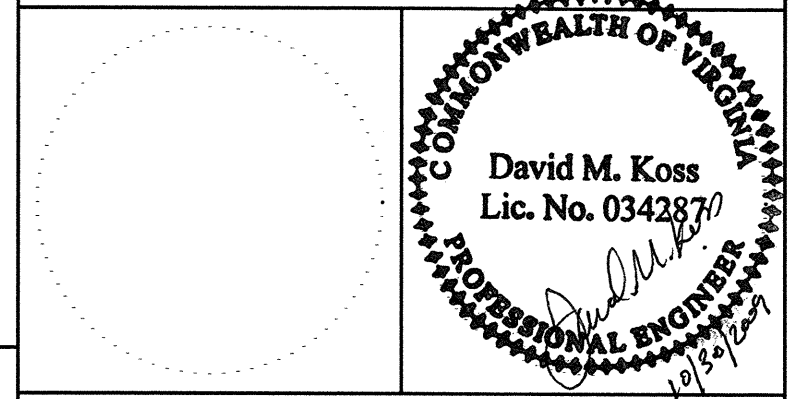
**DETAIL 4 - GUY ANCHOR AT WELDED ANGLE**  
SCALE: 1"=1'-0"



**KEY PLAN**  
SCALE:



**CONSULTANTS**  
KCI Associates of North Carolina, PA  
Engineers • Planners • Scientists • Construction Managers  
4601 Six Forks Road, Landmark Center II, Suite 220  
Raleigh, NC 27609-5210  
Phone (919) 783-9214  
Fax (919) 783-9266  
http://www.kci.com



U. S. COAST GUARD  
**CIVIL ENGINEERING UNIT  
CLEVELAND**

USCG, CEU CLEVELAND  
1240 EAST 9TH STREET  
CLEVELAND, OH 44199-2060

MARK	DATE	DESCRIPTION

A/E PROJECT NO: 120902770B  
CAD FILE NAME: D7629S04  
DESIGNED BY: XXX  
DRAWN BY: XXX  
EDITED BY:  
CHECKED BY: D. KOSS

SCALE: AS SHOWN PLOT SCALE:  
SHEET TITLE

**REHAB BAY 3 & 4  
SANDBLAST/PAINT SHOP BUILDING 015  
PORTSMOUTH VIRGINIA**

**STRUCTURAL  
ROOF PLAN BAY III AND IV**

REVIEWED BY: XXX	REVIEWED BY: XXX	REVIEWED BY: XXX
PROJECT ENG.	BRANCH CHIEF	TECH. DIRECTOR

XXX APPROVING OFFICER	XXX DATE
--------------------------	-------------

PROJECT NUMBER	DRAWING NUMBER
	<b>7629-D</b>
DISCIPLINE/SHT NO	SHEET 20 OF 20
S/04	