

ALBRITTON JUNIOR HIGH - FINISH SCHEDULE

ROOM NO	ROOM NAME	FLOOR		BASE		WALLS		CEILING		NOTES
		FIN	---	FIN	---	FIN	---	FIN	HGT	
E01	EXISTING CORRIDOR	TERR	---	---	---	CMU	---	---	---	1
E02	TEMPORARY CORRIDOR	EXIST	B2	CMU/W8/C6	C6	---	---	8'-0"	---	8
E03	TEMPORARY CLASSROOM	EXIST	B2	CMU/W8/C6	---	---	---	---	---	7,8,10
100	VESTIBULE	F4	B1	CMU W8/W3	C6	---	---	9'-0"	---	4
101	AFTERHOURS LOBBY	F6	B1	CMU W1/W3	C1	---	---	9'-0"	---	4
102	BOYS	F13/F14	B6	CMU W8/W13	C6	---	---	9'-0"	---	5
103	GIRLS	F13/F14	B6	CMU W8/W12	C6	---	---	9'-0"	---	5
104	MECH/ELECT	F3	---	CMU W8	C2	---	---	---	---	---
105	JANITOR	F5	B2	CMU W8	C2	---	---	---	---	---
106	STAFF TOILET	F13	B6	CMU W8	C6	---	---	9'-0"	---	---
107	COMMUNICATIONS	F5	B2	CMU W8	C1	---	---	11'-4"	---	3
108	CORRIDOR	F6	B1	CMU W1	C1	---	---	10'-0"	---	---
109	HVAC	F5	B2	CMU W8	C1	---	---	11'-4"	---	3
110	HVAC	F5	B2	CMU W8	C1	---	---	11'-4"	---	3
111	CLASSROOM	F5	B2	CMU W1/W13	C1	---	---	10'-0"	---	6,9
112	CLASSROOM	F5	B2	CMU W1/W12	C1	---	---	10'-0"	---	6,9
113	CLASSROOM	F5	B2	CMU W1/W13	C1	---	---	10'-0"	---	6,9
114	CLASSROOM	F5	B2	CMU W1/W12	C1	---	---	10'-0"	---	6,9
115	TEACHER WORKROOM	F5	B2	CMU W1	C1	---	---	10'-0"	---	9
116	STORAGE	F5	B2	CMU W1	C1	---	---	10'-0"	---	---
117	PREP ROOM	F5	B2	CMU W1	C1	---	---	10'-0"	---	---
118	SCIENCE LAB	F5	B2	CMU W1/W13	C1	---	---	10'-0"	---	6,9
119	CLASSROOM	F5	B2	CMU W1/W12	C1	---	---	10'-0"	---	6,9
120	VESTIBULE	F4	B1	CMU W8	C1	---	---	10'-0"	---	---
121	CORRIDOR	F6	B1	CMU W1	C1	---	---	10'-0"	---	---
122	HVAC	F5	B2	CMU W8	C1	---	---	11'-4"	---	3
123	HVAC	F5	B2	CMU W8	C1	---	---	11'-4"	---	3
124	SPECIAL PROJECTS	F5	B2	CMU W1	C1	---	---	10'-0"	---	---
125	STORAGE	F5	B2	CMU W1	C1	---	---	10'-0"	---	---
126	COMPUTER LAB	F5	B2	CMU W1/W12	C1	---	---	10'-0"	---	6,9
127	CLASSROOM	F5	B2	CMU W1/W12	C1	---	---	10'-0"	---	6,9

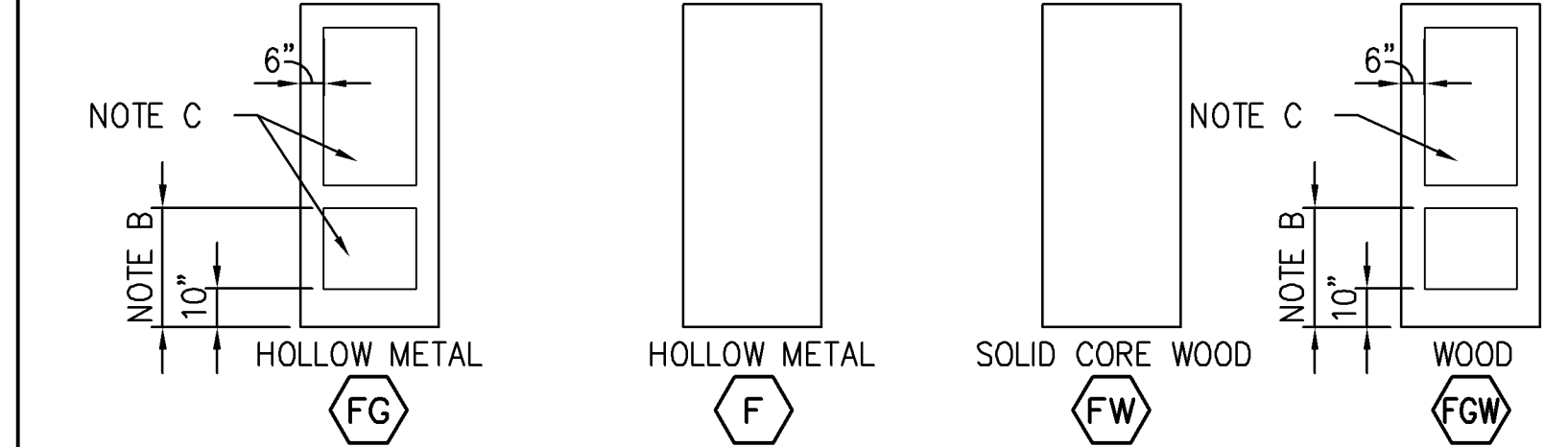
ALBRITTON JUNIOR HIGH - INTERIOR COLOR SCHEDULE

MANUFACTURERS NAMES & NUMBERS ARE USED ONLY FOR COLOR & PATTERN SELECTION AND ARE NOT INTENDED TO LIMIT BIDDING. SIMILAR COLORS & PATTERNS FROM OTHER MANUFACTURERS MAY BE ACCEPTABLE. IF COLORS & PATTERNS FROM OTHER MANUFACTURERS ARE SUBMITTED FOR APPROVAL, THE SUBMITTAL SHALL INCLUDE SAMPLES & DESCRIPTIONS OF ALL FINISH MATERIALS PLANNED FOR USE IN THE SPACE AFFECTED BY THE CHANGE.

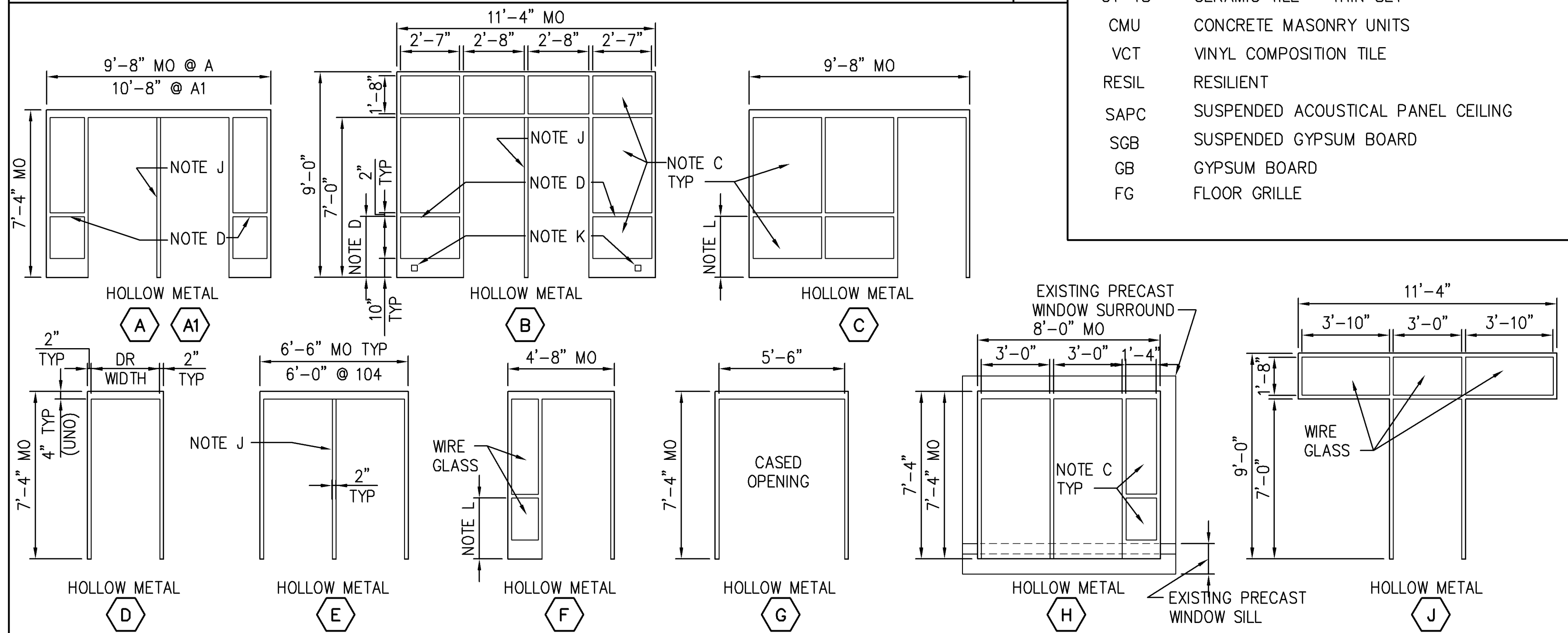
ITEM	DESCRIPTION
F3	CONCRETE CLEAR SEALER
F4	FLOOR GRILLE C/S GROUP- PEDIGRID, SA-G8
F5	VINYL COMPOSITION TILE ARMSTRONG - IMPERIAL TEXTURE #51861 WARM GREY
F6	TERRAZZO GREEN MATRIX S-04-14 (MATRIX TO MATCH EXISTING TERRAZZO)
F13	CERAMIC TILE DAL TILE - PATTERN #3013 50% KEYSTONES-#D138 GOLD DUST-2x2
F14	CERAMIC TILE DAL TILE - PATTERN #3013 50% KEYSTONES-#D142-LUMINARY GOLD-2x2
M1	CERAMIC TILE GROUT CUSTOM BUILDING PRODUCTS - #382 BONE
B1	TERRAZZO BASE 4" HIGH INTEGRAL COVE TO MATCH FLOOR
B2	RESILIENT BASE JOHNSONITE - #31 ZEPHYR - 4" HIGH
B6	CERAMIC TILE BASE CROSSVILLE - #A215 EMPRESS WHITE BULLNOSE - 4" HIGH
W1	PAINTED CMU SHERWIN WILLIAMS - #SW 7103 WHITE TAIL - SATIN
W3	PAINTED CMU SHERWIN WILLIAMS - #SW 6967 FRANK BLUE - SATIN NOTE 11
W8	PAINTED CMU SHERWIN WILLIAMS - #SW 7103 WHITE TAIL - SEMIGLOSS
W12	PAINTED CMU SHERWIN WILLIAMS - #SW 6522 SPORTY BLUE - SATIN
W13	PAINTED CMU SHERWIN WILLIAMS - #SW 6422 SHAGREEN - SATIN
C1	SUSP ACOUST PANEL ARMSTRONG - FINE FISSURED- 2'X2', COLOR: WHITE
C2	EXP. EXPOSED CEILING STRUCTURE
C6	PAINTED GYPSUM BOARD SHERWIN WILLIAMS - #SW 7103 WHITE TAIL - SATIN
C7	PAINTED GYPSUM BOARD SHERWIN WILLIAMS - #SW 7103 WHITE TAIL - FLAT
D1	STAINED WOOD DOORS TO MATCH EXISTING
D2	PAINTED HM DR &/OR FRAME SHERWIN WILLIAMS - #SW 7043 WORLDLY GRAY - SEMIGLOSS
D3	PAINTED HM DOOR & FRAME TO MATCH EXISTING
M7	COUNTERTOP LAMINATE FORMICA - #3505 STORM SOLIDZ, MATTE FINISH
M10	CASEWORK LAMINATE FORMICA - #934 PEARL, MATTE FINISH
M15	TACKBOARD CLARIDGE - #1111 SMOKE, FRAME PAINTED TO MATCH M4
M20	TOILET PARTITIONS ACCURATE PARTITIONS - SOLID PLASTIC #9500 IVORY ESSENCE SPECKLE
M21	BLINDS LEVOLOR - 1" RIVIERA METAL BLINDS, COLOR: #112 ALABASTER
M22	LOCKERS LIST INDUSTRIES- CLASSIC KD DOUBLE-TIER WARDROBE LOCKER. COLOR: 717 GRAND SLAM. REFER TO SHEET A703 FOR MORE INFORMATION.

ALBRITTON JUNIOR HIGH - DOOR SCHEDULE

DOOR NO	DOOR SIZE (width x height)	DOOR TYPE	LABEL (hour)	FRAME TYPE	HEAD DTL (all details are on plate A701)	JAMB DTL	SILL DTL	HDWR SET	NOTES	COLOR
E01	---	---	---	G	D	A	---	---	F,G	D2
E01P	5'-6" x 7'-0"	FW	3/4	F	D	A	B/A704	A	F,H	D1/D2
E02	PR 3'-0" x 7'-0"	F	---	H	---	---	A/A304	D	A,G,F	D3
E03	3'-0" x 7'-0"	FW	1/3	D	O	P	---	A	G	D1/D2
100	PR 3'-0" x 7'-0"	FG	---	A	N	J & K	L & M	D	A	D3
101A	PR 3'-0" x 7'-0"	FG	---	A1	D	B & C	G/A704&E	C	---	D3
101B	PR 3'-0" x 7'-0"	F	3	E	D	A	D/A704	F	E	D3
101C	3'-0" x 7'-0"	FG	---	C	N	I, J, K	J/A704	G	A	D3
104	PR 2'-9" x 7'-0"	F	---	E	H	F	G	H	A	D2
105	3'-0" x 7'-0"	FW	3/4	D	D	A	B/A704	I	M	D1/D2
106	3'-0" x 7'-0"	FW	1/3	D	D	A	C/A704	J	---	D1/D2
107	3'-0" x 7'-0"	FW	1/3	D	D	A	B/A704	B	---	D1/D2
108	PR 2'-8" x 7'-0"	FG	---	B	O	C	E	F	E	D3
109	3'-0" x 7'-0"	FW	1/3	D	D	A	B/A704	B	---	D1/D2
110	3'-0" x 7'-0"	FW	1/3	D	D	A	B/A704	B	---	D1/D2
111	3'-0" x 7'-0"	FW	1/3	F	D	A, B, C	B/A704&E	A	---	D1/D2
112	3'-0" x 7'-0"	FW	1/3	F	D	A, B, C	B/A704&E	A	---	D1/D2
113	3'-0" x 7'-0"	FW	1/3	F	D	A, B, C	B/A704&E	A	---	D1/D2
114	3'-0" x 7'-0"	FW	1/3	F	D	A, B, C	B/A704&E	A	---	D1/D2
115	3'-0" x 7'-0"	FW	1/3	J	O,B	P	B/A704	A	---	D1/D2
116	3'-0" x 7'-0"	FW	3/4	D	D	A	---	B	M	D1/D2
117	3'-0" x 7'-0"	FW	---	D	D	A	---	E	M	D1/D2
118A	3'-0" x 7'-0"	FW	3/4	F	D	A, B, C	B/A704&E	A	---	D1/D2
118B	3'-0" x 7'-0"	FW	3/4	F	D	A, B, C	B/A704&E	A	---	D1/D2
119	3'-0" x 7'-0"	FW	1/3	F	D	A, B, C	B/A704&E	A	---	D1/D2
120	PR 3'-0" x 7'-0"	FG	---	E	N	F	M	D	A	D3
121	PR 3'-0" x 7'-0"	FG	---	E	D	A	B/A704	C	---	D3
122	3'-0" x 7'-0"	FW	1/3	D	D	A	B/A704	B	---	D1/D2
123	3'-0" x 7'-0"	FW	1/3	D	D	A	B/A704	B	---	D1/D2
124	3'-0" x 7'-0"	FGW	---	D	D	A	---	E	---	D1/D2
125	3'-0" x 7'-0"	FW	---	D	D	A	---	E	---	D1/D2
126A	3'-0" x 7'-0"	FW	1/3	F	D	A, B, C	B/A704&E	A	---	D1/D2
126B	3'-0" x 7'-0"	FW	1/3	F	D	A, B, C	B/A704&E	A	---	D1/D2
127	3'-0" x 7'-0"	FW	1/3	F	D	A, B, C	B/A704&E	A	---	D1/D2



DOOR TYPES



FRAME TYPES

FINISH SCHEDULE NOTES

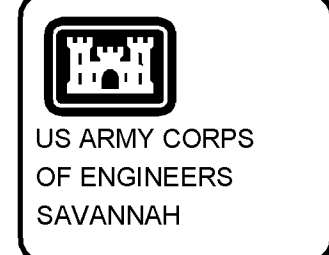
- ALL NEW FINISHES ARE TO MATCH EXISTING, INCLUDING COLOR AND TYPE. CEILING HEIGHT TO MATCH EXISTING.
- GYPSUM BOARD CEILING IS PART OF RATED CEILING ASSEMBLY AT BOTTOM OF TRUSSES. SEE DETAIL A/A001. NO ADDITIONAL CEILING REQUIRED BELOW.
- GYPSUM BOARD CEILING TO BE ATTACHED TO BOTTOM CORD OF TRUSSES. PROVIDE ADDITIONAL STUD FRAMING AS REQUIRED.
- PROVIDE W3 @ WEST WALL.
- SEE PLATE A704 FOR FLOOR TILE PATTERN & ACCENT PAINT COLOR LOCATION.
- PROVIDE W12 OR W13 AT WINDOW WALL.
- PAINT NOT REQUIRED AT EXISTING CMU WALLS, UNLESS EXISTING FINISH DAMAGED BY DEMOLITION OR CONSTRUCTION.
- UPON COMPLETION OF ADDITION AND DEMOLITION OF TEMPORARY CORRIDOR, RESTORE ALL EXISTING FINISHES IN ORIGINAL CLASSROOM TO THEIR CONDITION PRIOR TO CONSTRUCTION.
- PROVIDE BLINDS AT ALL EXTERIOR WINDOWS.
- PROVIDE BLINDS AT NEW WINDOW INSTALLED IN EXISTING OPENING.
- VERIFY AND MATCH SCHOOL COLOR.

DOOR SCHEDULE NOTES

- DOOR, FRAME, ANCHORAGE & GLAZING TO BE BLAST RESISTANT PER UFC-4-010-01.
- ALIGN CENTERLINE OF DOOR RAIL WITH CENTERLINE OF PANIC HARDWARE INSTALLATION HEIGHT.
- CLEAR TEMPERED GLASS AT INTERIOR DOORS (WIRE GLASS AT RATED DOORS). INSULATED TEMPERED / LAMINATED GLASS AT EXTERIOR DOORS, TINTED TO MATCH EXISTING.
- ALIGN BOTTOM OF FRAME RAIL WITH BOTTOM OF DOOR RAIL.
- PROVIDE HOLD OPEN DEVICE.
- VERIFY FRAME SIZE WITH EXISTING OPENING.
- TEMPORARY FRAME TO BE REMOVED UPON COMPLETION OF ADDITION.
- FRAME TO REPLACE TEMPORARY FRAME UPON COMPLETION OF ADDITION.
- PROVIDE REMOVABLE MULLION.
- MOUNT MAGNETIC HOLD OPEN DEVICE ON FRAME. ALL WIRING TO BE CONCEALED.
- RAIL LOCATION TO MATCH FRAME TYPES A & B.
- PROVIDE SELF CLOSING FEATURE TO DOOR TO MEET LEED EXHAUST REQUIREMENTS.

FINISH SCHEDULE LEGEND

TERR	TERRAZZO
CT-MS	CERAMIC TILE - MUD SET
CT-TS	CERAMIC TILE - THIN SET
CMU	CONCRETE MASONRY UNITS
VCT	VINYL COMPOSITION TILE
RESIL	RESILIENT
SAPC	SUSPENDED ACOUSTICAL PANEL CEILING
SGB	SUSPENDED GYPSUM BOARD
GB	GYPSUM BOARD
FG	FLOOR GRILLE



DESIGNED BY:	DATE: 25 JUN 2010
DRAWN BY:	SOLICITATION NO: W92HN-09-R-0018
CHECKED BY:	CONTRACT NO:
SUBMITTED BY:	CATEGORY CODE: F00-16-
FILE NAME:	PILOT DATE:
SIZE:	PILOT SCALE: 3/4x22
SYMBOL:	DESCRIPTION:

DESIGNED BY:	DATE: 25 JUN 2010
DRAWN BY:	SOLICITATION NO: W92HN-09-R-0018
CHECKED BY:	CONTRACT NO:
SUBMITTED BY:	CATEGORY CODE: F00-16-
FILE NAME:	PILOT DATE:
SIZE:	PILOT SCALE: 3/4x22
SYMBOL:	DESCRIPTION:

ALBRITTON JUNIOR HIGH SCHOOL ADDITION
FT BRAGG NORTH CAROLINA

DOOR & FINISH SCHEDULES

PLATE REFERENCE NUMBER
A-601
SHEET 59