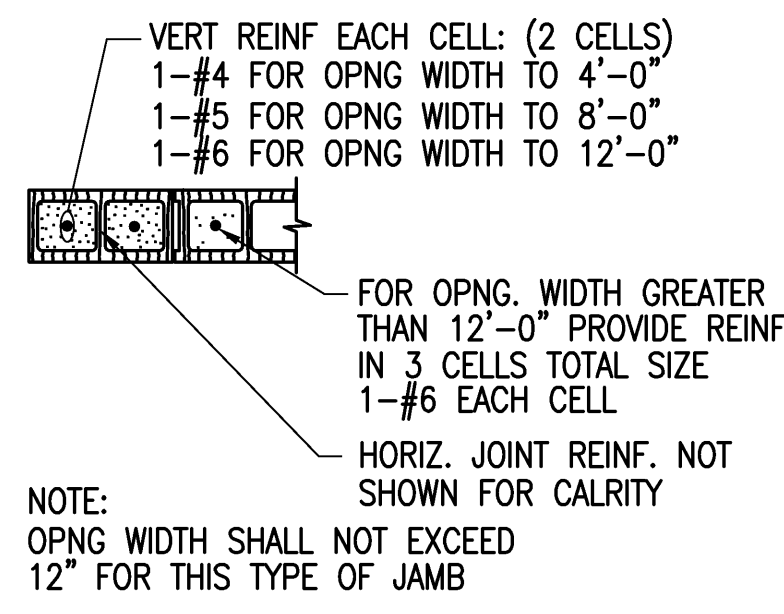
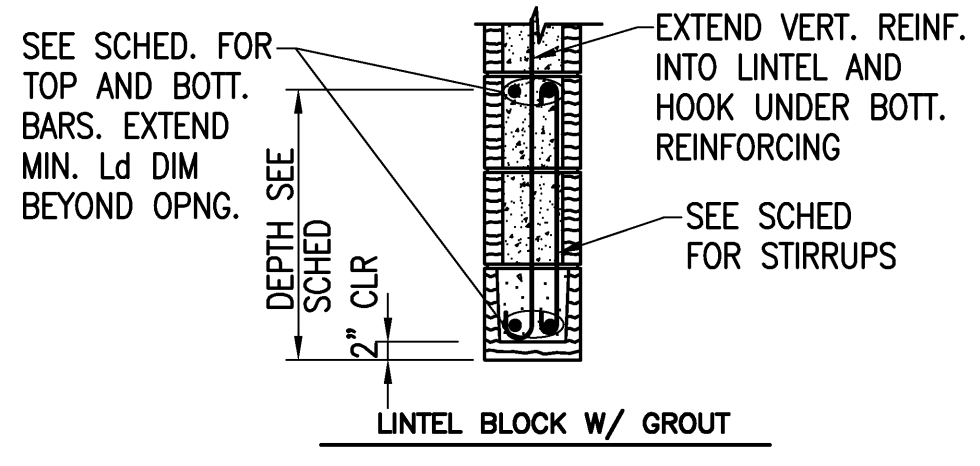


ELEVATION AT CMU WALL
SCALE: NONE

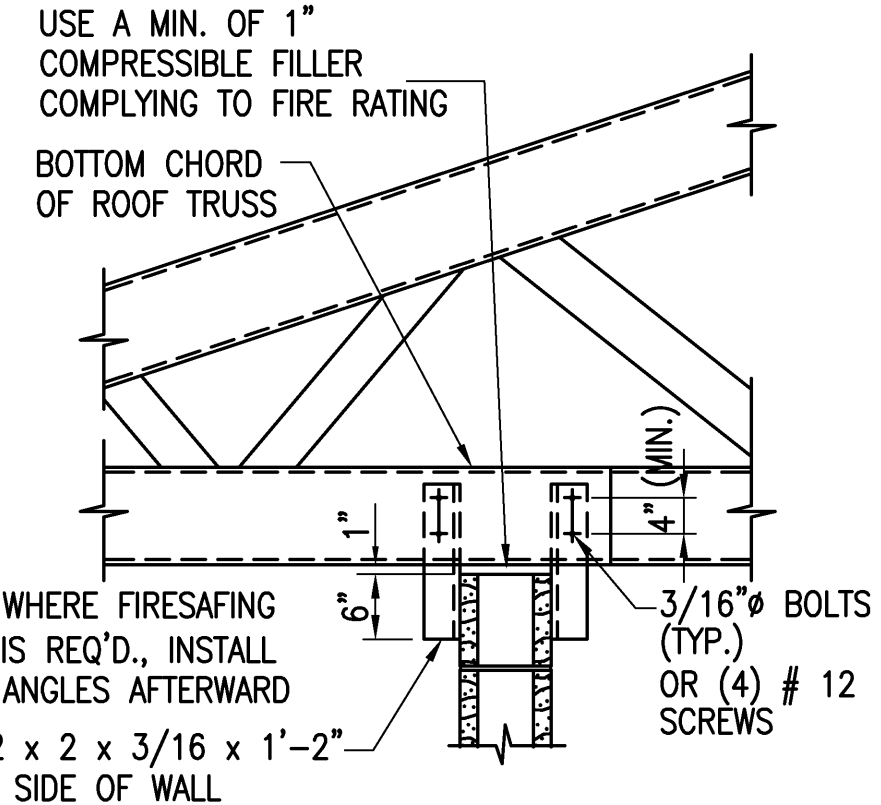
- NOTES:
1. SEE ARCH & STRUCT PLAN DWGS FOR CMU WALLS.



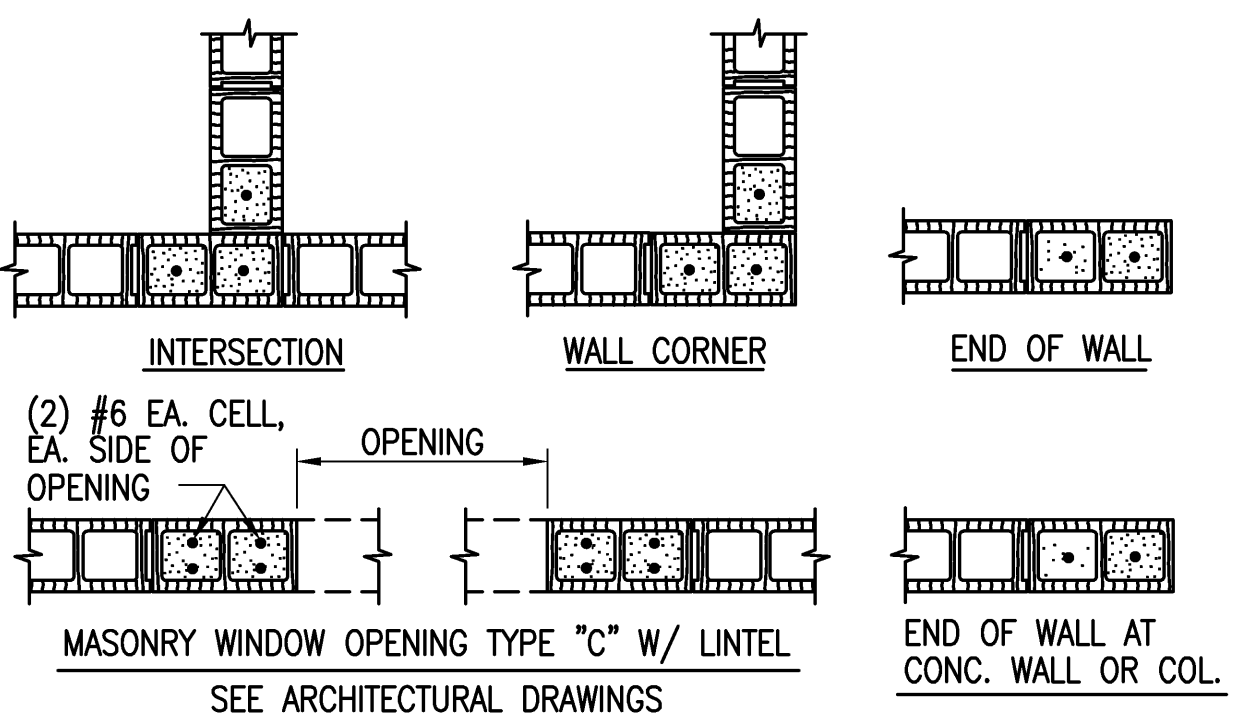
1 SECTION
SCALE: NONE



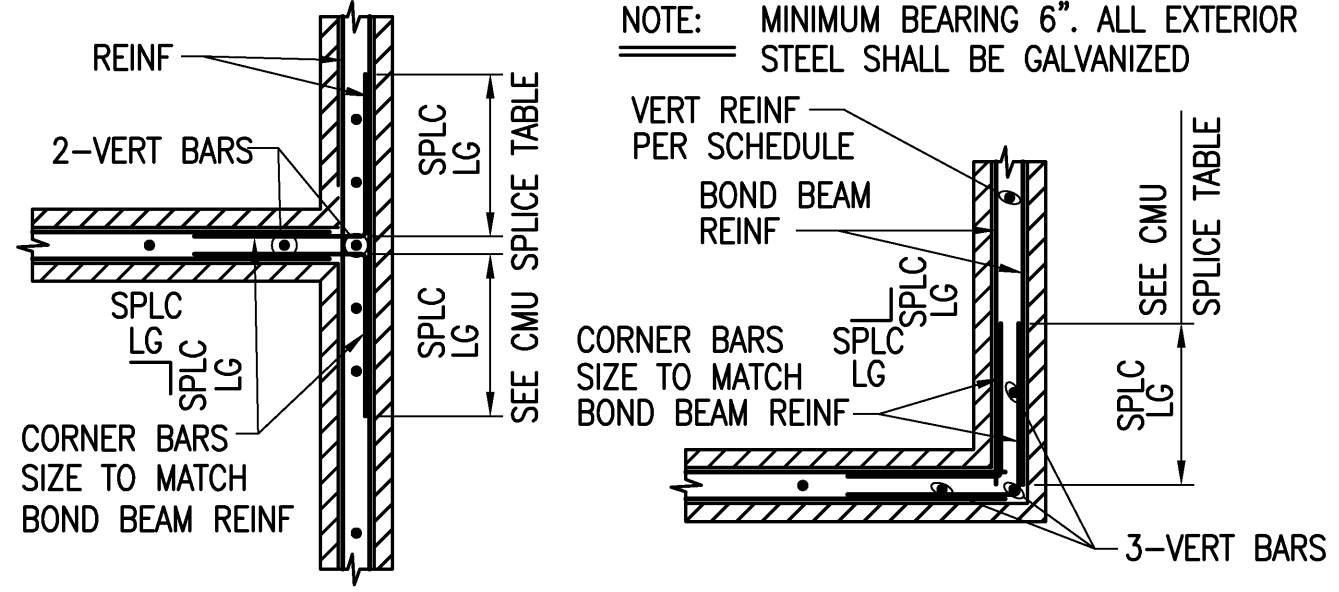
3 SECTION
SCALE: NONE



2 SECTION
SCALE: NONE



4 SECTION
SCALE: NONE



5 SECTION
SCALE: NONE

NOMINAL WALL WIDTH	TOP & BOTTOM REINFORCING (2 1/2" CLR. TOP & BOT.)		
	6'-0" OR LESS CLEAR SPAN	OVER 6'-0" TO 9'-0" CLEAR SPAN	OVER 9'-0" TO 12'-0" CLEAR SPAN
6"	(1) #5	(1) #5	(1) #6
8"	(2) #5	(2) #5	(2) #6
10"	(2) #5	(2) #5	(2) #6 *
12"	(2) #5	(2) #5	(2) #6

1. STRUCTURAL DRAWINGS DO NOT INDICATE ALL OPENINGS IN MASONRY WALLS. VERIFY NUMBER, SIZE AND LOCATION OF ALL OPENINGS IN MASONRY WALLS FROM ARCHITECTURAL DRAWINGS AND APPROVED PLUMBING, MECHANICAL AND ELECTRICAL SHOP DRAWINGS.

2. LINTELS WITH 6'-0" CLEAR SPAN OR LESS SHALL BE 8" DEEP LINTELS. CLEAR SPANS GREATER THAN 6'-0" SHALL BE 1'-4" DEEP. *

3. PROVIDE 8" BEARING EA. END FOR 8" DEEP LINTELS. PROVIDE 16" BEARING EA. END FOR 16" DEEP LINTELS. LINTELS SHALL BEAR ON A MIN. OF 2 COURSES OF SOLID OR GROUT FILLED CMU.

4. FOR HEAD DETAILS REFER TO ARCHITECTURAL DRAWINGS.

5. REINFORCING SHALL BE ASTM A615M, GRADE 400. MASONRY SHALL HAVE A MINIMUM COMPRESSIVE STRENGTH OF 1500 PSI AT 28 DAYS.

6. CMU WITH KNOCKOUT-WEBS SHALL NOT BE USED TO CONSTRUCT LINTELS.

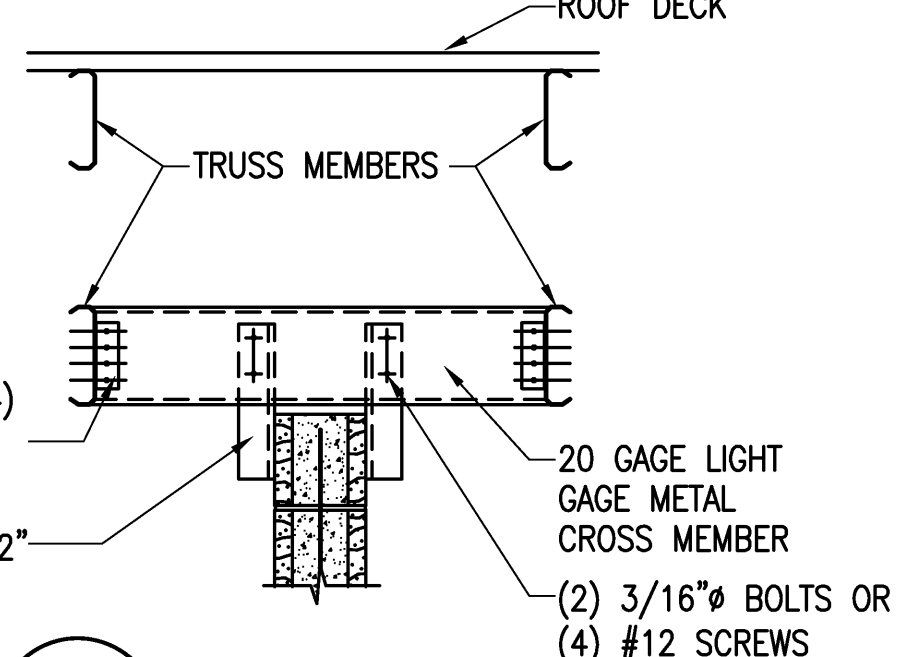
7. CONTRACTOR SHALL SUBMIT FOR APPROVAL SHOP DRAWINGS AND SCHEDULES SHOWING SIZE, DETAILS, LOCATIONS, ETC. FOR ALL LINTELS IN CMU WALLS.

* NOTE: SEE SECTION 3/S501, LINTEL BEAM SUPPORTING VENEER SHALL BE 8" DEEP.

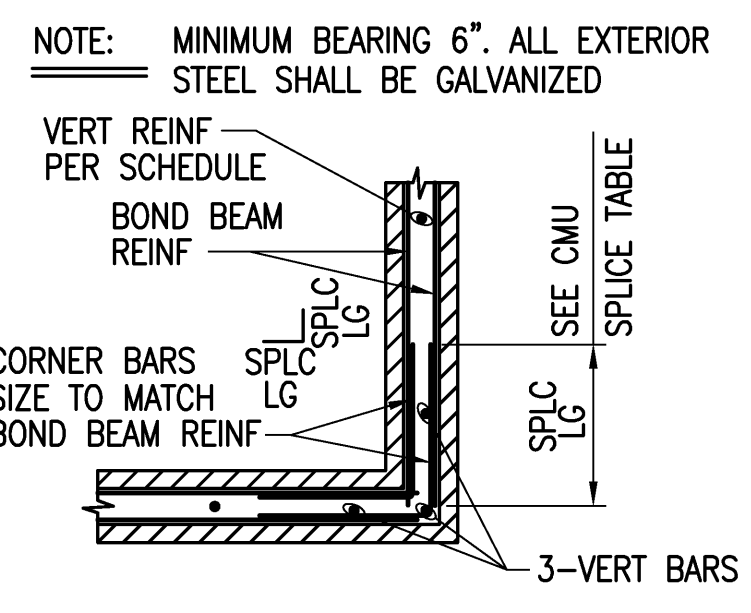
UNSUPPORTED WALL HEIGHT OR LOCATION	WALL THICKNESS	VERT BARS MIN SIZE MAX SPACING	BOND BEAM	
			BAR SIZE	MAX.SPACING
INTERIOR - LOAD BEARING & PERIMETER/EXTERIOR WALLS	8"	1-#5 @ 4'-0"	2-#5's	8'-0"
(NON-LOAD BEARING) INTERIOR WALLS ABOVE ELEV. 0'-0"	6"	1-#4 @ 4'-0"	2-#4's	8'-0"
	8"	1-#4 @ 4'-0"	2-#5's	8'-0"

NOTE: 1. REINFORCING SIZES AND SPACING GIVEN IN SECTIONS AND DETAILS SHALL SUPERSEDE THE ABOVE SCHEDULE REQUIREMENTS.
2. PROVIDE CONTINUOUS BOND BEAM AT WALL LATERAL SUPPORT LOCATIONS.

BRICK/4" BLOCK LINTEL SCHEDULE	
SPAN	4" BRICK/BLOCK
SPANS UP TO 8'-0"	1 - BENT PL 3/8 x 1 1/2 x 7 1/2

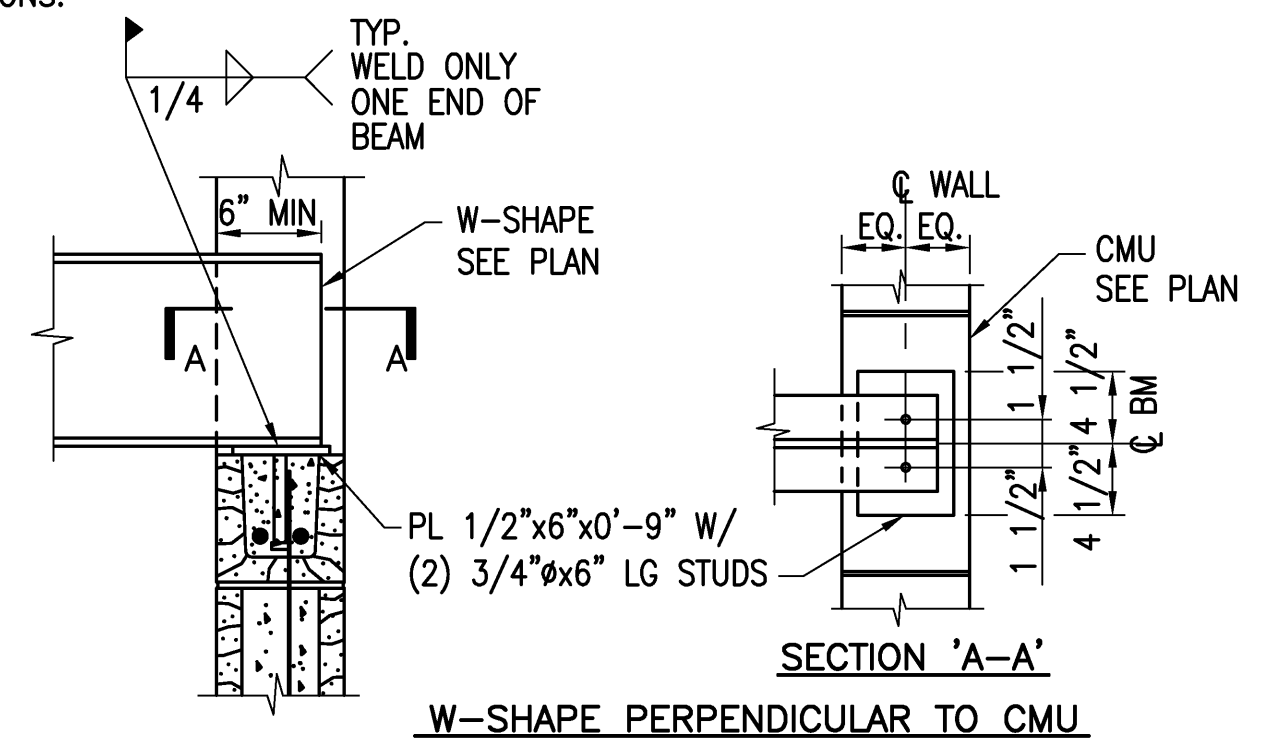


6 SECTION
SCALE: NONE

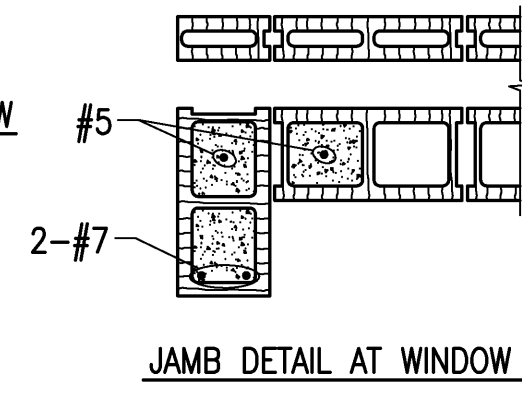
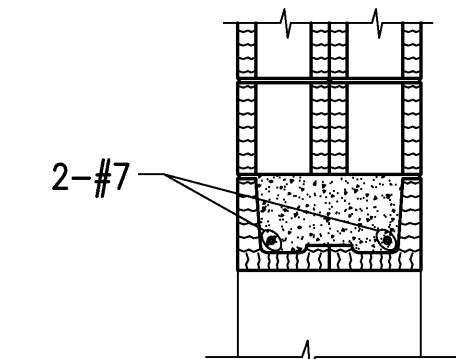


7 SECTION
SCALE: NONE

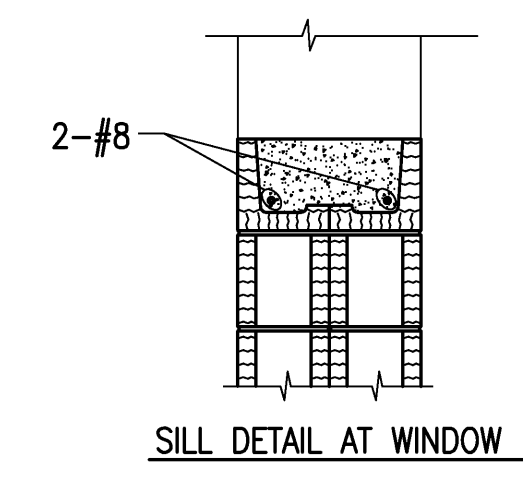
BAR SIZE	BASIC LAP SPLICE Ld FOR CMU REINFORCING
#3	18"
#4	24"
#5	30"
#6	36"
#7	42"
#8	48"



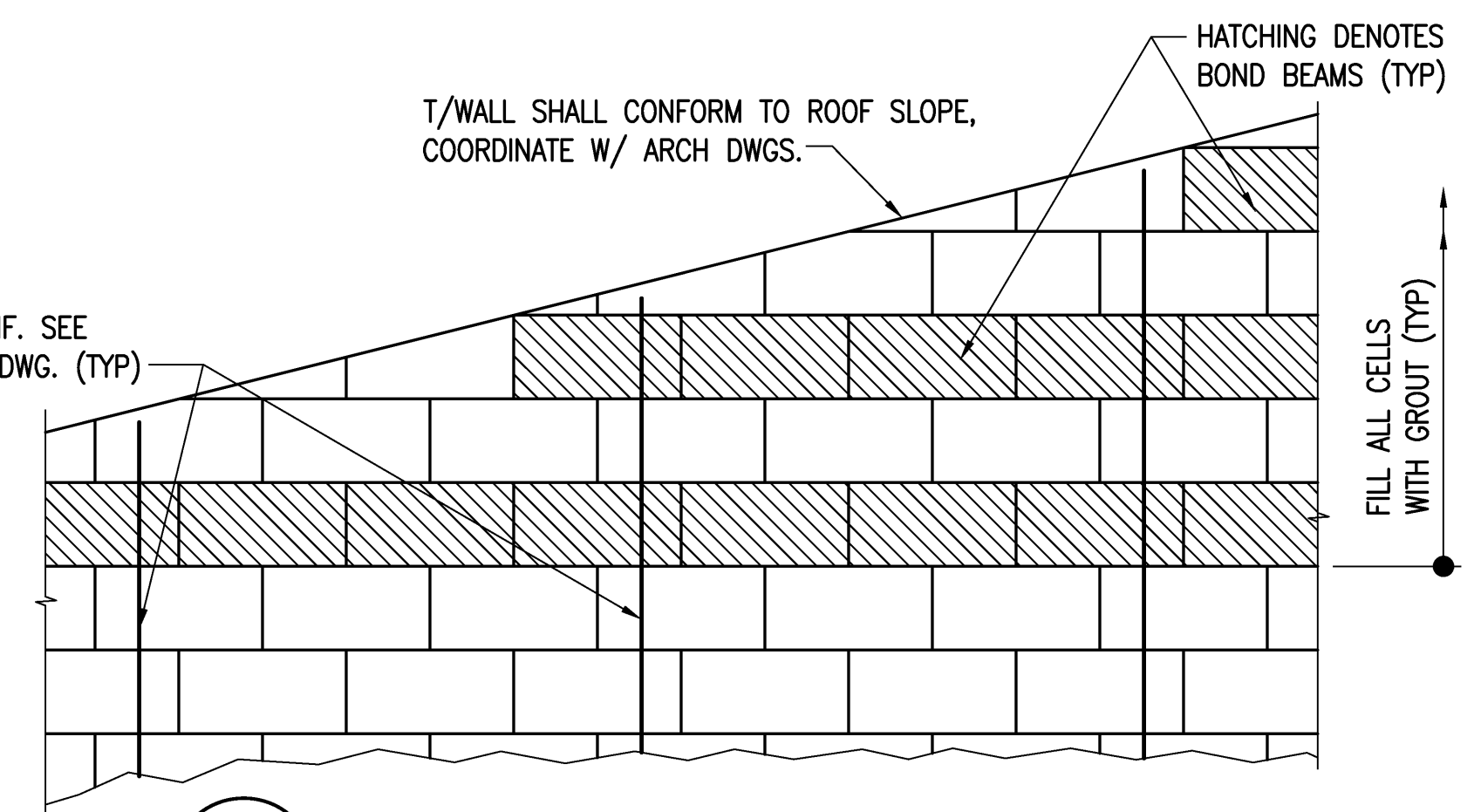
7 SECTION
SCALE: NONE



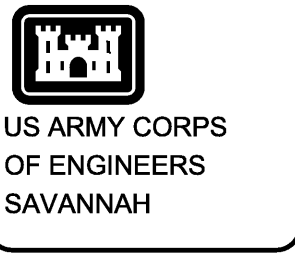
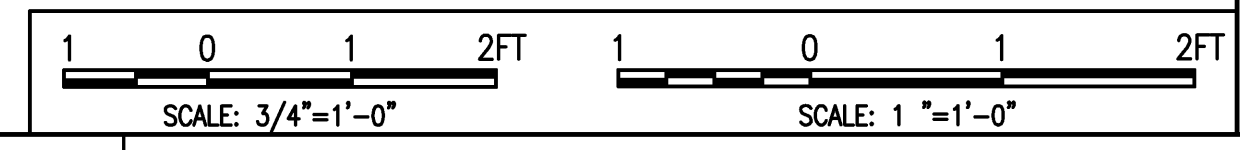
8 DETAIL
SCALE: NONE



DETAILS FOR WINDOW TYPES (A) AND (B) SEE ARCH. DWG A101 FOR LOCATION



9 ELEVATION OF TAPERED CMU WALL
SCALE: NONE



DATE	DESCRIPTION	SYMBOL	BY

DESIGNED BY: KUS	DATE: 25 JAN 2010
DWN BY: CHJ/TML	SOLICITATION NO.: W912HN-09-R-0018
SUBMITTED BY: KUS	CONTRACT NO.:
FILE NAME: LSP ASSOCIATES LTD.	CATEGORY CODE: 730-44-01
SIZE: 34x22	PLOT DATE:
PLOT SCALE:	

U.S. ARMY ENGINEER DISTRICT SAVANNAH DISTRICT
LSP ASSOCIATES LTD.
205 1/2 KING STREET
CHARLESTON, SC 29401

ALBRIGHT JUNIOR HIGH SCHOOL ADDITION
FT BRAGG NORTH CAROLINA
MASONRY SECTION AND DETAILS

PLATE REFERENCE NUMBER S-501
SHEET 36