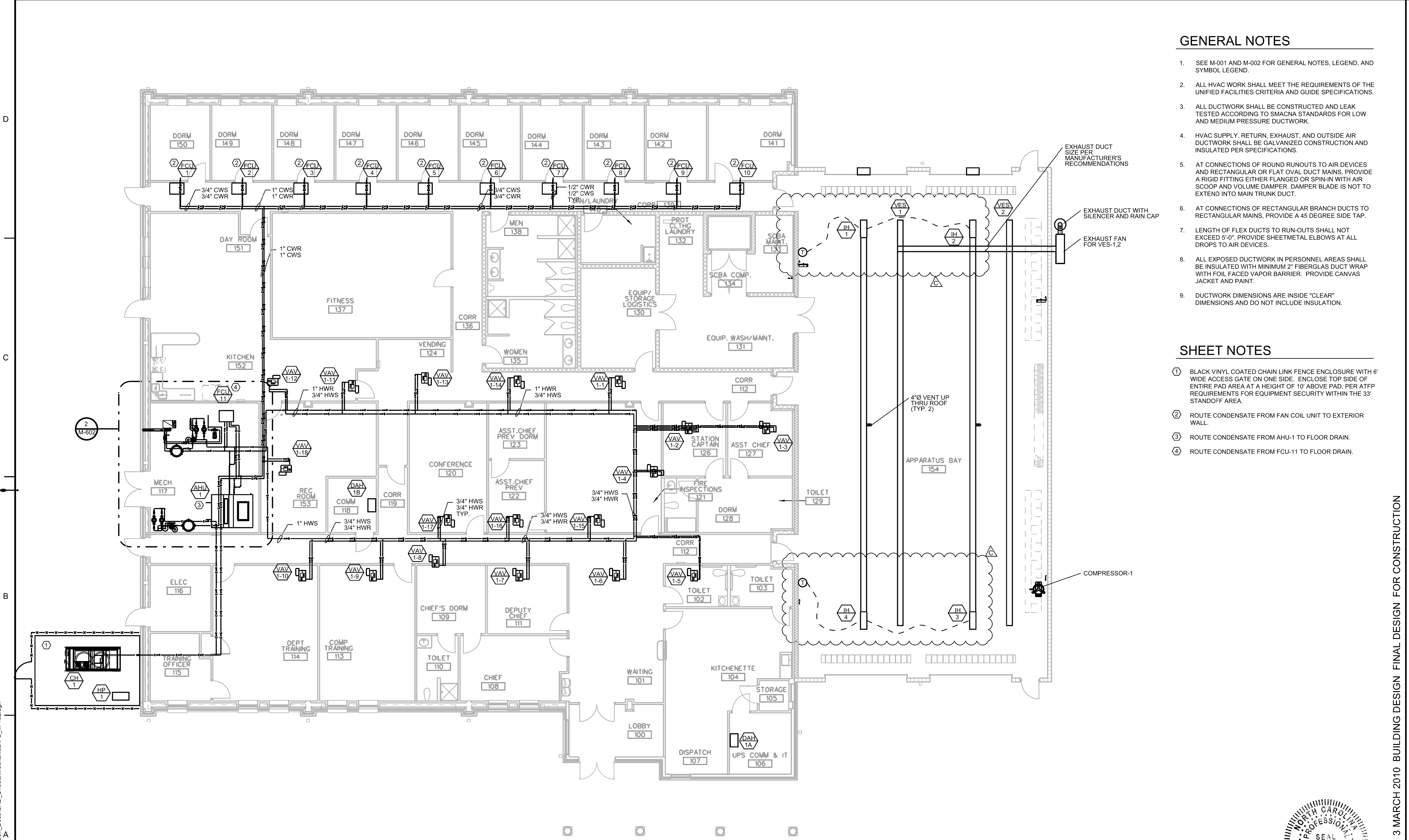


04:21 PM on Friday, June 25, 2010
 M:\2008\12082908-FireStation\ENGR\BIM\Con_Docs\CAD_Sheets\Mechanical\FS_M-102.dgn



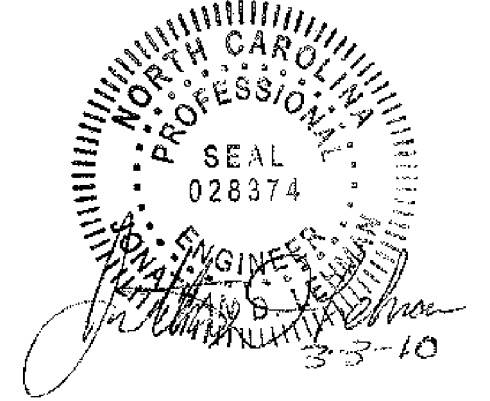
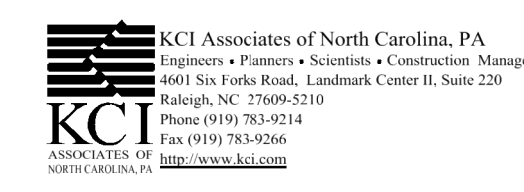
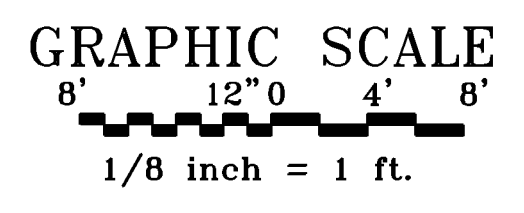
GENERAL NOTES

1. SEE M-001 AND M-002 FOR GENERAL NOTES, LEGEND, AND SYMBOL LEGEND.
2. ALL HVAC WORK SHALL MEET THE REQUIREMENTS OF THE UNIFIED FACILITIES CRITERIA AND GUIDE SPECIFICATIONS.
3. ALL DUCTWORK SHALL BE CONSTRUCTED AND LEAK TESTED ACCORDING TO SMACNA STANDARDS FOR LOW AND MEDIUM PRESSURE DUCTWORK.
4. HVAC SUPPLY, RETURN, EXHAUST, AND OUTSIDE AIR DUCTWORK SHALL BE GALVANIZED CONSTRUCTION AND INSULATED PER SPECIFICATIONS.
5. AT CONNECTIONS OF ROUND RUNOUTS TO AIR DEVICES AND RECTANGULAR OR FLAT OVAL DUCT MAINS, PROVIDE A RIGID FITTING EITHER FLANGED OR SPIN-IN WITH AIR SCOOP AND VOLUME DAMPER. DAMPER BLADE IS NOT TO EXTEND INTO MAIN TRUNK DUCT.
6. AT CONNECTIONS OF RECTANGULAR BRANCH DUCTS TO RECTANGULAR MAINS, PROVIDE A 45 DEGREE SIDE TAP.
7. LENGTH OF FLEX DUCTS TO RUN-OUTS SHALL NOT EXCEED 5'-0". PROVIDE SHEETMETAL ELBOWS AT ALL DROPS TO AIR DEVICES.
8. ALL EXPOSED DUCTWORK IN PERSONNEL AREAS SHALL BE INSULATED WITH MINIMUM 2" FIBERGLAS DUCT WRAP WITH FOIL FACED VAPOR BARRIER. PROVIDE CANVAS JACKET AND PAINT.
9. DUCTWORK DIMENSIONS ARE INSIDE "CLEAR" DIMENSIONS AND DO NOT INCLUDE INSULATION.

SHEET NOTES

- ① BLACK VINYL COATED CHAIN LINK FENCE ENCLOSURE WITH 6' WIDE ACCESS GATE ON ONE SIDE. ENCLOSE TOP SIDE OF ENTIRE PAD AREA AT A HEIGHT OF 10' ABOVE PAD, PER ATF REQUIREMENTS FOR EQUIPMENT SECURITY WITHIN THE 33' STANDOFF AREA.
- ② ROUTE CONDENSATE FROM FAN COIL UNIT TO EXTERIOR WALL.
- ③ ROUTE CONDENSATE FROM AHU-1 TO FLOOR DRAIN.
- ④ ROUTE CONDENSATE FROM FCU-11 TO FLOOR DRAIN.

1 MECHANICAL PIPING PLAN
 M-102 SCALE: 1/8" = 1'-0"



3 MARCH 2010 BUILDING DESIGN FINAL DESIGN FOR CONSTRUCTION

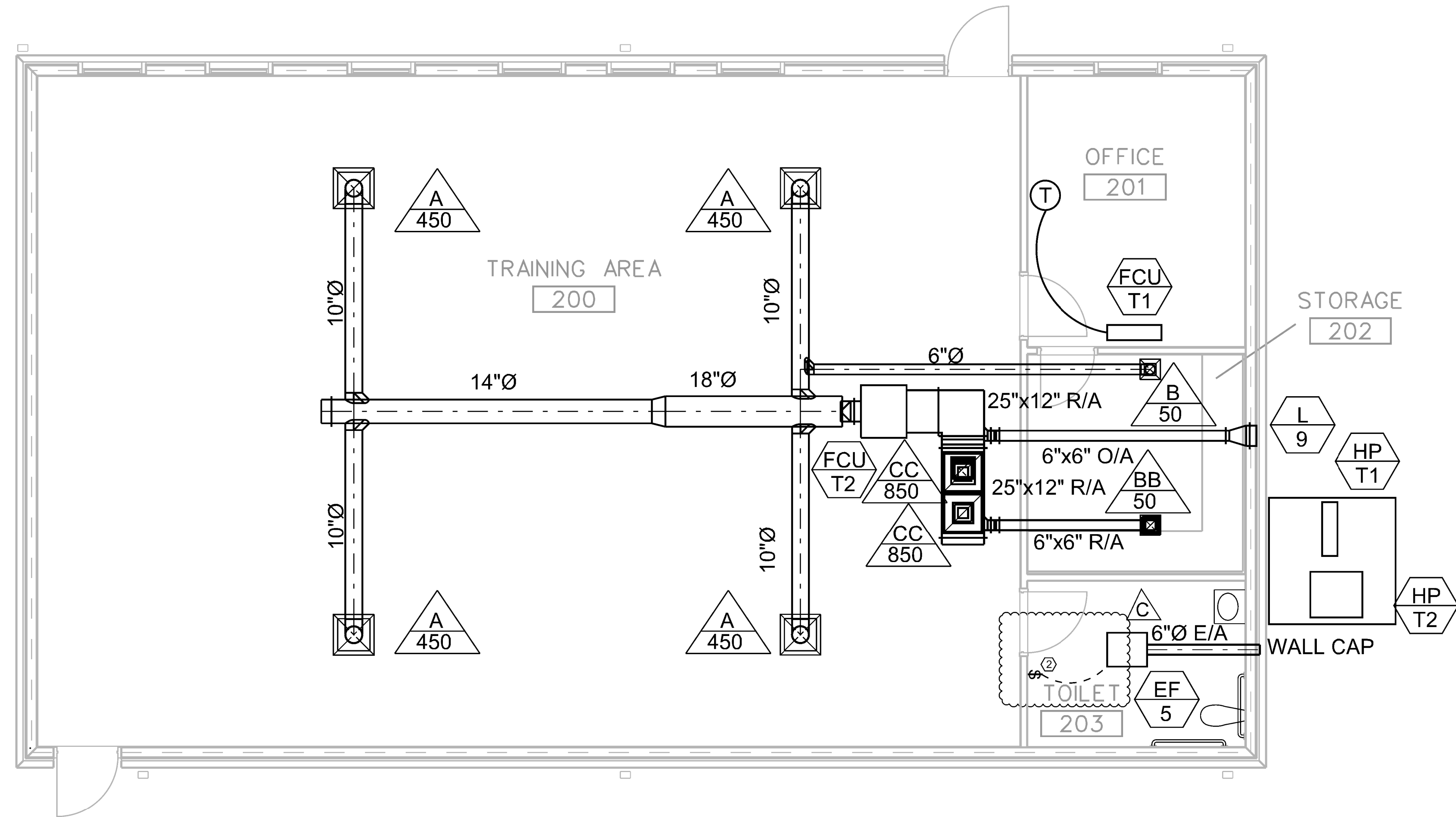
U.S. ARMY CORPS OF ENGINEERS
 HUNTSVILLE CENTER
 MECHANICAL PIPING PLAN
 FIRE STATION

SHEET IDENTIFICATION
M-102
 SHEET 94 OF 117



MARK	DESCRIPTION	DATE	APPR
A	100% PRE-FINAL DESIGN	11/06/09	
B	FINAL DESIGN FOR CONSTRUCTION	03/03/10	
C	FINAL REVISION FOR CONSTRUCTION	06/25/10	

DESIGNED BY:	DATE:
DRAWN BY:	25-JUL-2009
CHECKED BY:	US: W912DY09A000
DATE:	CONTRACT NO.:
25-JUL-2009	W912DY09A000
US: W912DY09A000	FILE NUMBER:
	XX-XXXXXX
	FILE NAME:
	FS_M-102.dgn



1 MECHANICAL PLAN
M-104 SCALE: 1/4" = 1'-0"

GENERAL NOTES

- SEE M-001 AND M-002 FOR GENERAL NOTES, LEGEND, AND SYMBOL LEGEND.
- ALL HVAC WORK SHALL MEET THE REQUIREMENTS OF THE UNIFIED FACILITIES CRITERIA AND GUIDE SPECIFICATIONS.
- ALL DUCTWORK SHALL BE CONSTRUCTED AND LEAK TESTED ACCORDING TO SMACNA STANDARDS FOR LOW AND MEDIUM PRESSURE DUCTWORK.
- HVAC SUPPLY, RETURN, EXHAUST, AND OUTSIDE AIR DUCTWORK SHALL BE GALVANIZED CONSTRUCTION AND INSULATED PER SPECIFICATIONS.
- AT CONNECTIONS OF ROUND RUNOUTS TO AIR DEVICES AND RECTANGULAR OR FLAT OVAL DUCT MAINS, PROVIDE A RIGID FITTING EITHER FLANGED OR SPIN-IN WITH AIR SCOOP AND VOLUME DAMPER. DAMPER BLADE IS NOT TO EXTEND INTO MAIN TRUNK DUCT.
- AT CONNECTIONS OF RECTANGULAR BRANCH DUCTS TO RECTANGULAR MAINS, PROVIDE A 45 DEGREE SIDE TAP.
- LENGTH OF FLEX DUCTS TO RUN-OUTS SHALL NOT EXCEED 5'-0". PROVIDE SHEETMETAL ELBOWS AT ALL DROPS TO AIR DEVICES.
- ALL EXPOSED DUCTWORK IN PERSONNEL AREAS SHALL BE INSULATED WITH MINIMUM 2" FIBERGLAS DUCT WRAP WITH FOIL FACED VAPOR BARRIER. PROVIDE CANVAS JACKET AND PAINT.
- DUCTWORK DIMENSIONS ARE INSIDE "CLEAR" DIMENSIONS AND DO NOT INCLUDE INSULATION.

SHEET NOTES

- PROVIDE ONE(1) LOCKABLE CONDENSER GUARD FOR BOTH HEAT PUMP UNITS.
- EF-5 WIRED VIA LIGHT SWITCH BY ELECTRICAL CONTRACTOR.



MARK	DESCRIPTION	DATE	APPR
A	100% PRE-FINAL DESIGN	11/06/09	
B	FINAL DESIGN FOR CONSTRUCTION	03/03/10	
C	FINAL REVISION FOR CONSTRUCTION	06/25/10	

DESIGNED BY: SMH	DATE: 25-JUL-2009	CONTRACT NO.:W912DY-09-R-0003
DRAWN BY: SMH	DATE: 25-JUL-2009	FILE NUMBER: XX-XX-XXXX
SUBMITTED BY: KCI TECHNOLOGIES	CONTRACT NO.:W912DY-09-R-0003	FILE NUMBER: XX-XX-XXXX
PLOT SCALE: AS NOTED	PLOT DATE: AS NOTED	FILE NAME: FS_M-104.dgn
ANSI D		

3 MARCH 2010 BUILDING DESIGN FINAL DESIGN FOR CONSTRUCTION

15TH STREET FIRE STATION
FORT STEWART, GEORGIA
MECHANICAL PLAN
TRAINING CENTER

SHEET IDENTIFICATION
M-104
SHEET 96 OF 117

