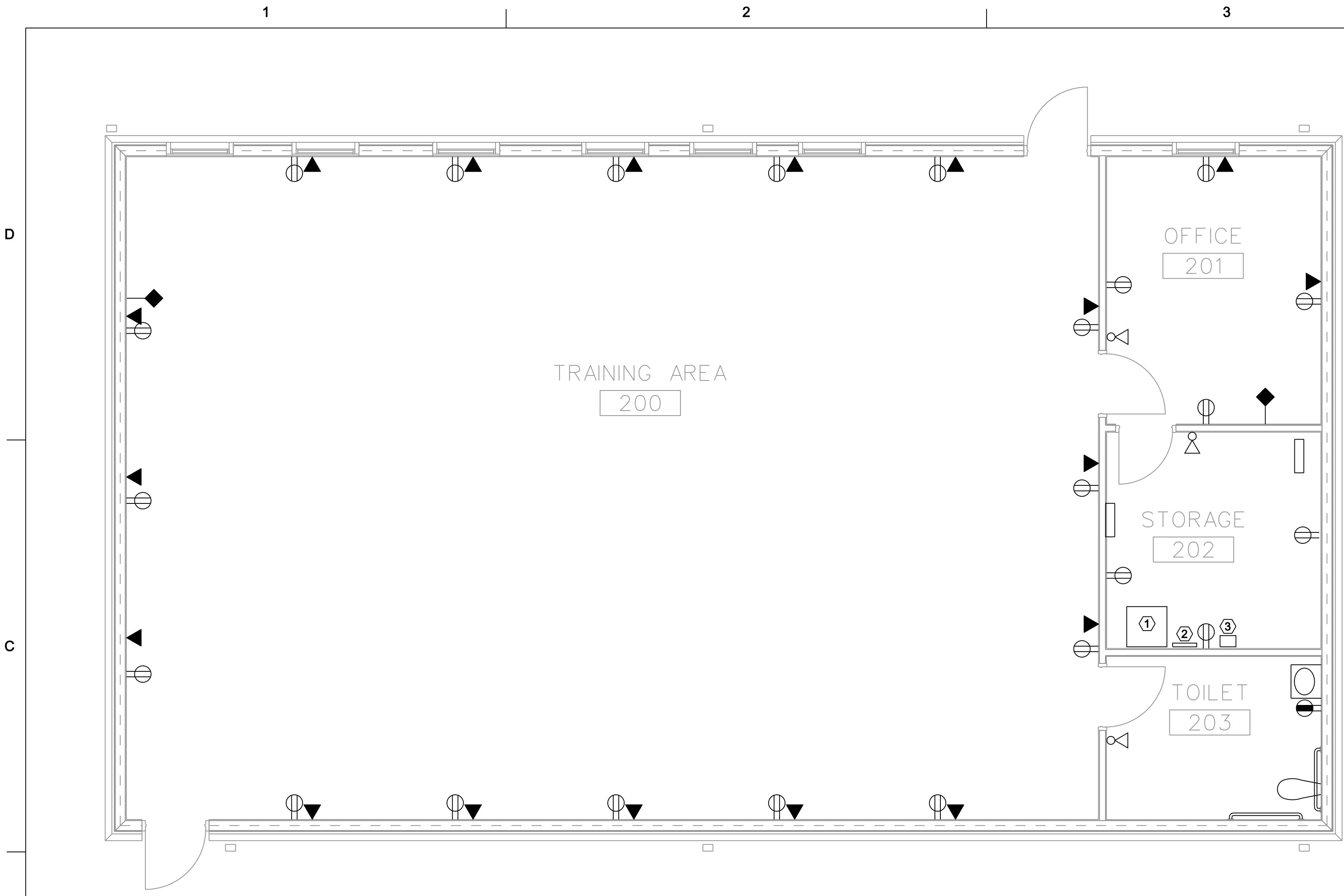
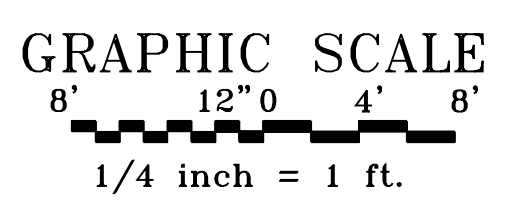


02:49 PM on Thursday, March 04, 2010  
 M:\2009\12082908-FS\Stewart\ENGR\BIM\Con\_Doc\CAD\_Sheets\Telecommunications\F\_S\_T-121.dgn



**1 LIGHTING AND POWER PLAN**  
SCALE: 1/4" = 1'-0"



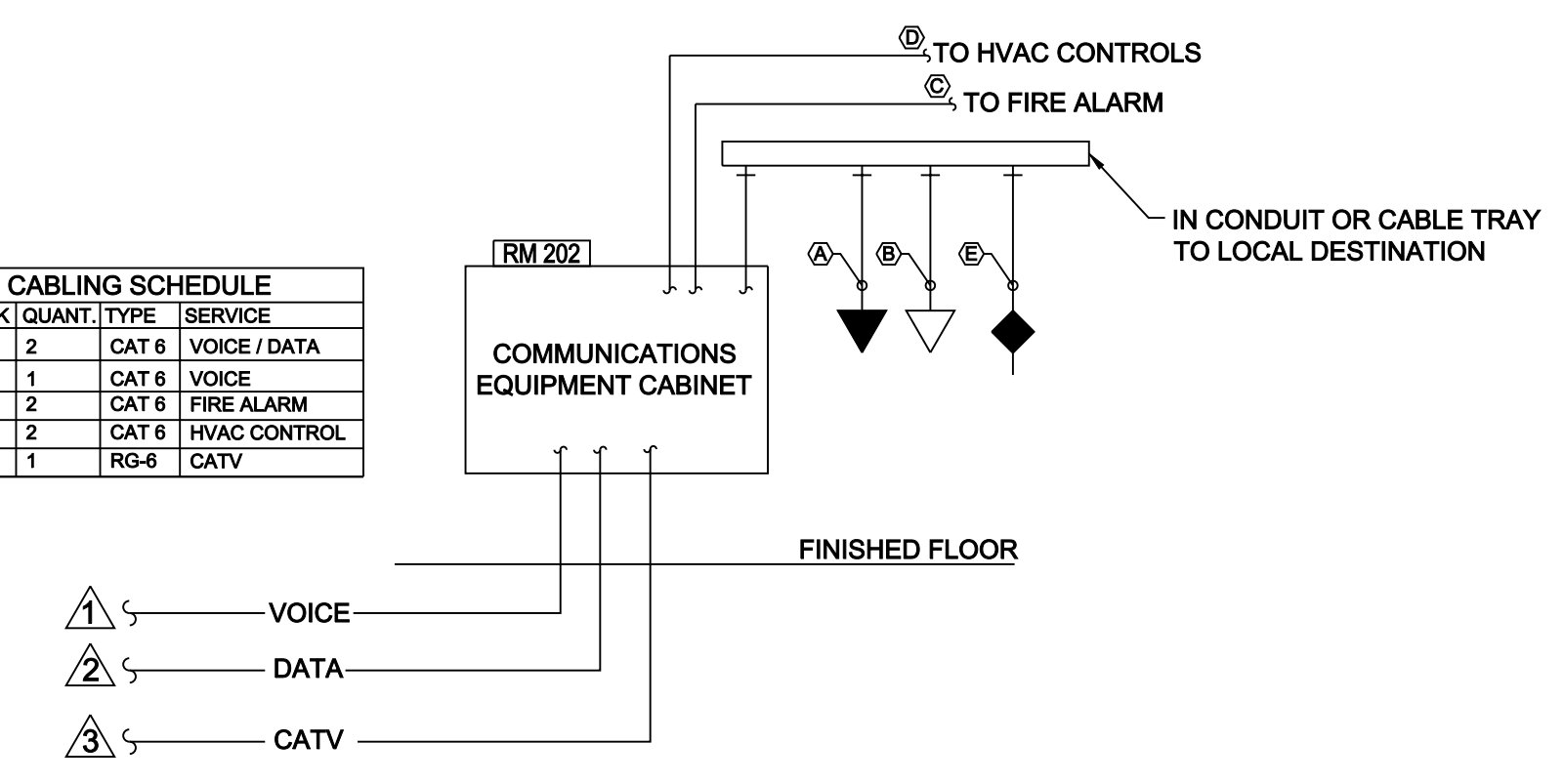
**PLAN KEY NOTES:**

- ① PROVIDE 24" x 24" WALL MOUNTED DATA CABINET FOR BUILDING TELECOMMUNICATIONS EQUIPMENT.
- ② TELECOMMUNICATIONS GROUNDING BUS BAR (SEE DETAIL, THIS SHEET)
- ③ BUILDING ENTRANCE TERMINAL, FURNISHED AND INSTALLED BY FT. STEWART DOIM.

**GENERAL NOTES:**

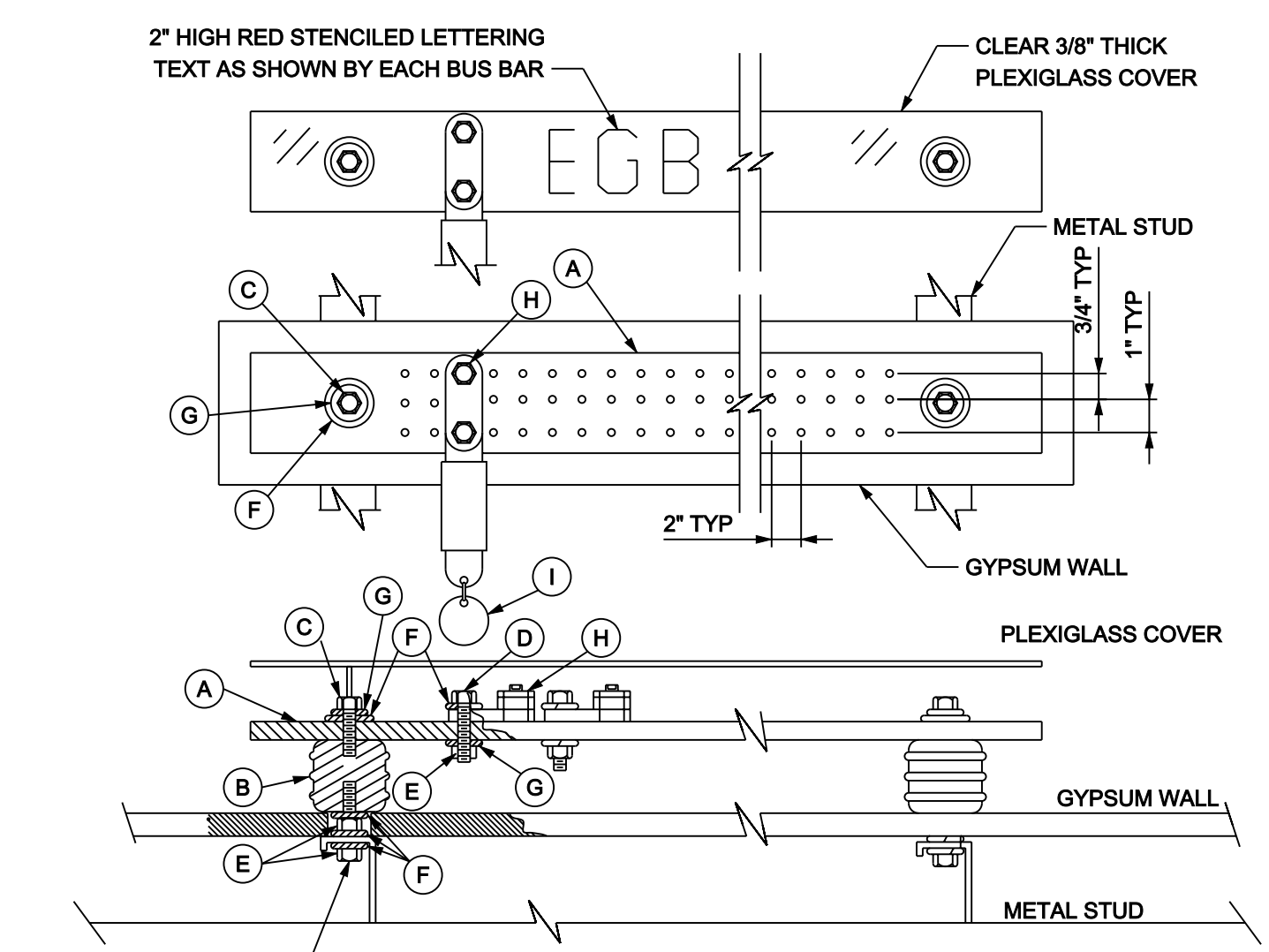
1. ALL TELECOMMUNICATIONS OUTLETS SHALL BE LABELLED IN ACCORDANCE WITH TIA/EIA 606-A. LABELLING SHALL BE PROVIDED AT BOTH THE OUTLET AND THE TERMINATING END IN THE COMMUNICATIONS ROOM.
2. ALL OUTLETS SHALL COMPLY WITH TIA/EIA-568-B, AND TIA/EIA-569-B, AND BE WIRED IN ACCORDANCE WITH TIA/EIA T568A.
3. COAXIAL CABLE RUN A DISTANCE GREATER THAN 225 FEET SHALL BE A MINIMUM OF RG-11.
4. ALL CONDUIT FOR TELECOMMUNICATIONS PURPOSES SHALL BE EMT. MINIMUM CONDUIT SIZE FOR ANY TELECOMMUNICATIONS CABLE SHALL BE 1". CONDUIT SHALL NOT BE FILLED TO GREATER THAN 50% OF ITS MAXIMUM CABLE CARRYING CAPACITY.
5. PULL BOXES SHALL BE PLACED IN CONDUIT RUNS WHERE A CONTINUOUS CONDUIT RUN EXCEEDS 100 FEET, OR WHERE THERE ARE MORE THAN 180 DEGREES OF BEND IN THE CONDUIT.
6. UNDER NO CIRCUMSTANCES MAY A PULL BOX BE INSTALLED IN LIEU OF A CONDUIT BEND.

MARK	QUANT.	TYPE	SERVICE
(A)	2	CAT 6	VOICE / DATA
(B)	1	CAT 6	VOICE
(C)	2	CAT 6	FIRE ALARM
(D)	2	CAT 6	HVAC CONTROL
(E)	1	RG-6	CATV



**2 COMMUNICATIONS RISER DIAGRAM**  
SCALE: NOT TO SCALE

- △ PVC CONDUIT FOR VOICE COMMUNICATIONS OSP BACKBONE TO FIRE STATION COMMUNICATIONS ROOM. (SEE SITE PLAN)
- △ PVC CONDUIT FOR FIBER OPTIC OSP DATA BACKBONE TO FIRE STATION COMMUNICATIONS ROOM. (SEE SITE PLAN)
- △ PVC CONDUIT FOR CATV TO FIRE STATION COMMUNICATIONS ROOM. (SEE SITE PLAN)



- (A) DESCRIPTION: COPPER BUS BAR (4"x 24"x 1/2")
- (B) STANDOFF INSULATOR (3/8"-16 x 1/2")
- (C) HEX BOLT (3/8"-16 x 1-1/4")
- (D) HEX BOLT (3/8"-16 x 1")
- (E) FLAT WASHER (3/8")
- (F) HEX NUT (3/8"-16)
- (G) LOCK WASHER (3/8")
- (H) LUG
- (I) PROVIDE BRASS TAGS ON CABLES. BRASS TAGS - PANDUIT P/N MTB150D-Q ENGRAVED "GROUND DO NOT DISCONNECT"

- NOTES:
1. MOUNT AT 12" AFF TO BOTTOM OF BUS BAR.
  2. COORDINATE TO PROVIDE METAL BACKING BEHIND SHEETROCK WALLS IF NOT PRESENT.

**3 GROUND BUS BAR DETAIL**  
SCALE: NOT TO SCALE



MARK	DESCRIPTION	DATE	APPR.
A	100% PRE-FINAL DESIGN	11/06/09	
B	FINAL DESIGN FOR CONSTRUCTION	03/03/10	

DESIGNED BY: SMH	DATE: 26-JULY-2009	SOLICITATION NO.:	FILE NUMBER:
DWN BY: SMH	CONTRACT NO.:	W191DY09-R-0020	XXX-XXXXXX
SUBMITTED BY: KOT TECHNOLOGIES	FILE NAME:	W191DY09-C-0003	FS_SMT_M-01
AS NOTED	PLOT DATE:		

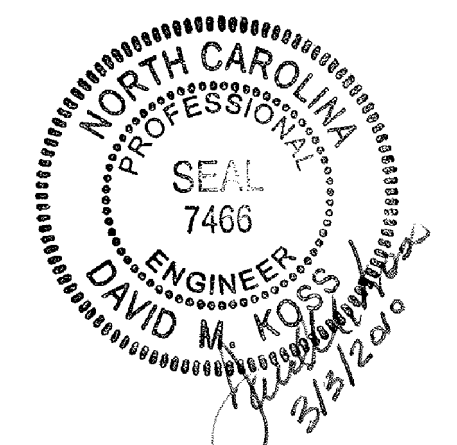
U.S. ARMY CORPS OF ENGINEERS  
 HUNTSVILLE CENTER  
 15TH STREET FIRE STATION  
 FORT STEWART, GEORGIA  
**TRAINING BUILDING COMMUNICATIONS PLAN**

SHEET IDENTIFICATION  
**T-121**  
 SHEET 116 OF 117

3 MARCH 2010 BUILDING DESIGN FINAL DESIGN FOR CONSTRUCTION



KCI Associates of North Carolina, PA  
 Engineers • Planners • Scientists • Construction Managers  
 601 S. Trade Street, Landmark Center II, Suite 220  
 Raleigh, NC 27609-5210  
 Phone (919) 782-9214  
 Fax (919) 782-9266  
 www.kci.com



**STOA**  
 Architects  
 121 EAST GOVERNMENT STREET  
 PENSACOLA, FL 32502 (850)432-1912