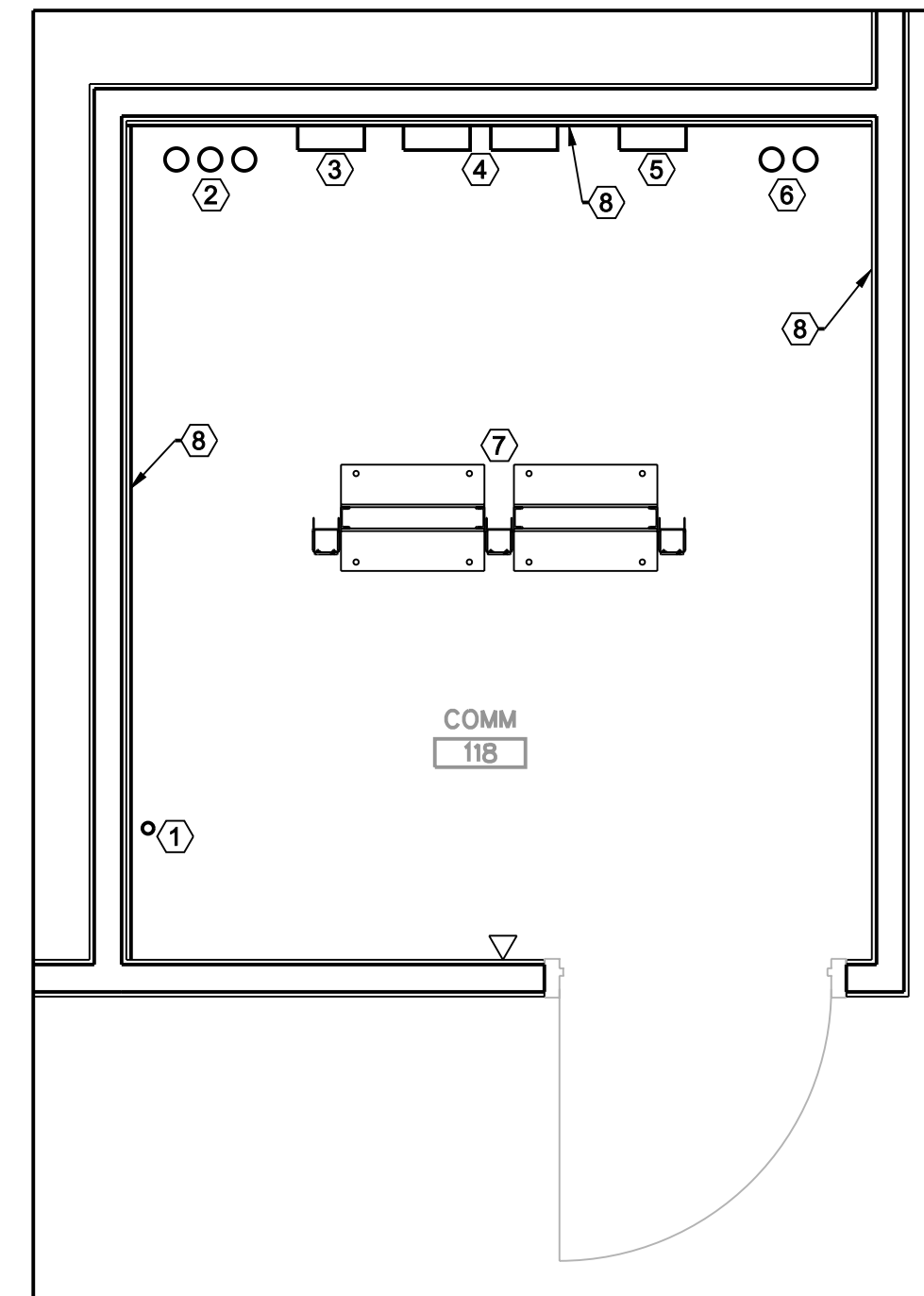


08:16 PM on Wednesday, March 03, 2010
 M:\2008\12082008-FireStation\ENGR\BIM\Con_Docs\CAD_Sheets\Telecommunications\F_S_T-101.dgn



2 ENLARGED COMMS ROOM PLAN
 T-101 SCALE: 1/2" = 1'-0"

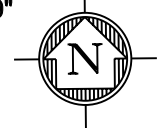
- PLAN KEY NOTES:**
- ① 1-1/2" PVC CONDUIT FOR CATV SERVICE FROM CATV HEADEND EQUIPMENT TO TRAINING BUILDING
 - ② (3) 4" PVC CONDUIT STUBS THROUGH SLAB FOR INCOMING OSP CABLING. PROVIDE CAPPED WITH PULL STRING. (CABLING BY FT. STEWART DOIM)
 - ③ BUILDING ENTRANCE TERMINAL - FURNISHED AND INSTALLED BY FT. STEWART DOIM
 - ④ (2) CAT 6 RATED 110 TYPE PUNCHDOWN BLOCKS FOR VOICE CROSS-CONNECT. PROVIDE 200 PAIR 110 BLOCKS.
 - ⑤ BET FOR OSP VOICE SERVICE TO TRAINING BUILDING. BET AND CABLE FURNISHED AND INSTALLED BY FT. STEWART DOIM.
 - ⑥ (2) 3" PVC CONDUITS FOR VOICE AND DATA SERVICE TO TRAINING BUILDING.
 - ⑦ 19" FLOOR MOUNTED EQUIPMENT RACK WITH INTEGRATED CABLE MANAGEMENT
 - ⑧ 3/4" FIRE RATED PLYWOOD BACKBOARD WITH TWO (2) COATS FIRE RETARDANT GREY PAINT

- GENERAL NOTES:**
1. ALL TELECOMMUNICATIONS OUTLETS SHALL BE LABELLED IN ACCORDANCE WITH TIA/EIA 608-A. LABELLING SHALL BE PROVIDED AT BOTH THE OUTLET AND THE TERMINATING END IN THE COMMUNICATIONS ROOM.
 2. ALL OUTLETS SHALL COMPLY WITH TIA/EIA-568-B, AND TIA/EIA-569-B, AND BE WIRED IN ACCORDANCE WITH TIA/EIA T568A.
 3. COAXIAL CABLE RUN A DISTANCE GREATER THAN 225 FEET SHALL BE A MINIMUM OF RG-11.
 4. ALL CONDUIT FOR TELECOMMUNICATIONS PURPOSES SHALL BE EMT. MINIMUM CONDUIT SIZE FOR ANY TELECOMMUNICATIONS CABLE SHALL BE 1". CONDUIT SHALL NOT BE FILLED TO GREATER THAN 50% OF ITS MAXIMUM CABLE CARRYING CAPACITY.
 5. PULL BOXES SHALL BE PLACED IN CONDUIT RUNS WHERE A CONTINUOUS CONDUIT RUN EXCEEDS 100 FEET, OR WHERE THERE ARE MORE THAN 180 DEGREES OF BEND IN THE CONDUIT.
 6. UNDER NO CIRCUMSTANCES MAY A PULL BOX BE INSTALLED IN LIEU OF A CONDUIT BEND.

- LEGEND**
- ▽ SINGLE VOICE JACK (RJ-45)
 - ▼ DUAL VOICE/DATA JACK (RJ-45)
 - ◆ SINGLE CATV JACK - WALL MOUNT @ 88" A.F.F.

- PLAN NOTES:**
- ① PROVIDE 12" x 3" WIRE BASKET TYPE CABLE TRAY. MOUNT 6" ABOVE LAY-IN CEILING MINIMUM. COORD FINAL LOCATION WITH OTHER TRADES.
 - ② CATV BUILDING ENTRANCE - PROVIDE 4'-0" x 8'-0" PLYWOOD BACKBOARD WITH FIRE RETARDANT GREY PAINT FOR MOUNTING OF CATV ENTRANCE EQUIPMENT - ROUTE CATV SIGNAL CABLE (RG-6) TO SECONDARY CATV BACKBOARD IN COMMUNICATIONS ROOM VIA 1" EMT CONDUIT

1 COMMUNICATIONS PLAN
 T-101 SCALE: 1/8" = 1'-0"



MARK	DESCRIPTION	DATE	APPR.
A	100% PRE-FINAL DESIGN	11/06/09	
B	FINAL DESIGN FOR CONSTRUCTION	03/03/10	

DESIGNED BY: U.S. ARMY CORPS OF ENGINEERS HUNTSVILLE CENTER	DATE: 26-JUL-2009	CONTRACT NO.:W912DY-09-C-003
DESIGNED BY: KCI	DATE: 03/03/10	FILE NUMBER: XX-XXXXXX
DESIGNED BY: KCI	DATE: 03/03/10	FILE NAME: FS_SHT_M-101

3 MARCH 2010 BUILDING DESIGN FINAL DESIGN FOR CONSTRUCTION

15TH STREET FIRE STATION
 FORT STEWART, GEORGIA
**FIRE STATION
 COMMUNICATIONS PLAN**

SHEET IDENTIFICATION
T-101
 SHEET 115 OF 117

