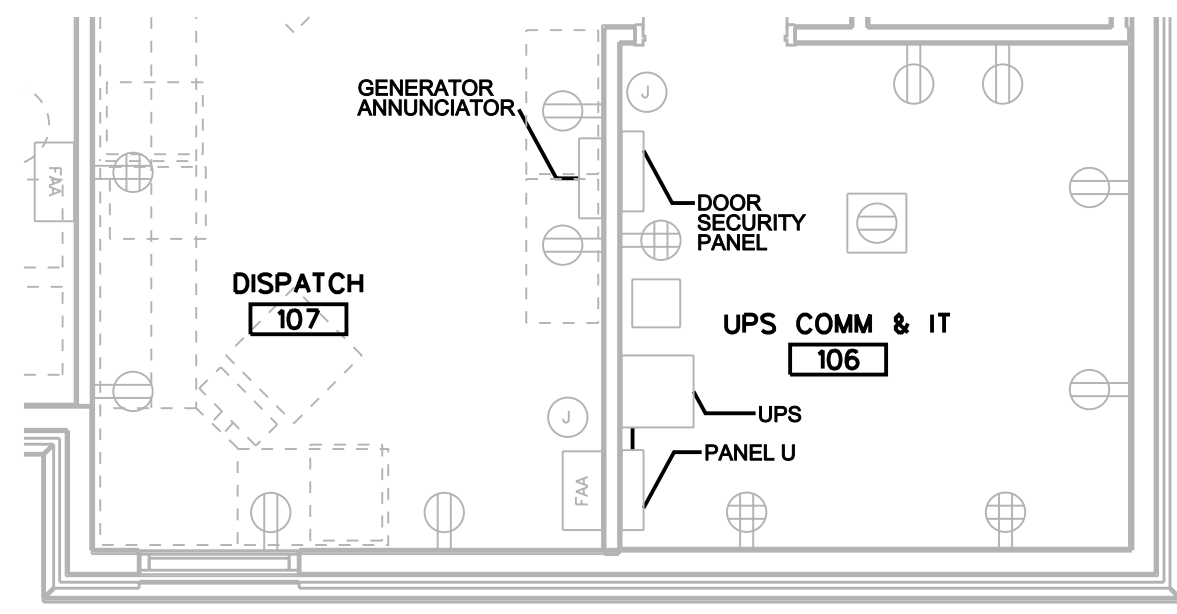
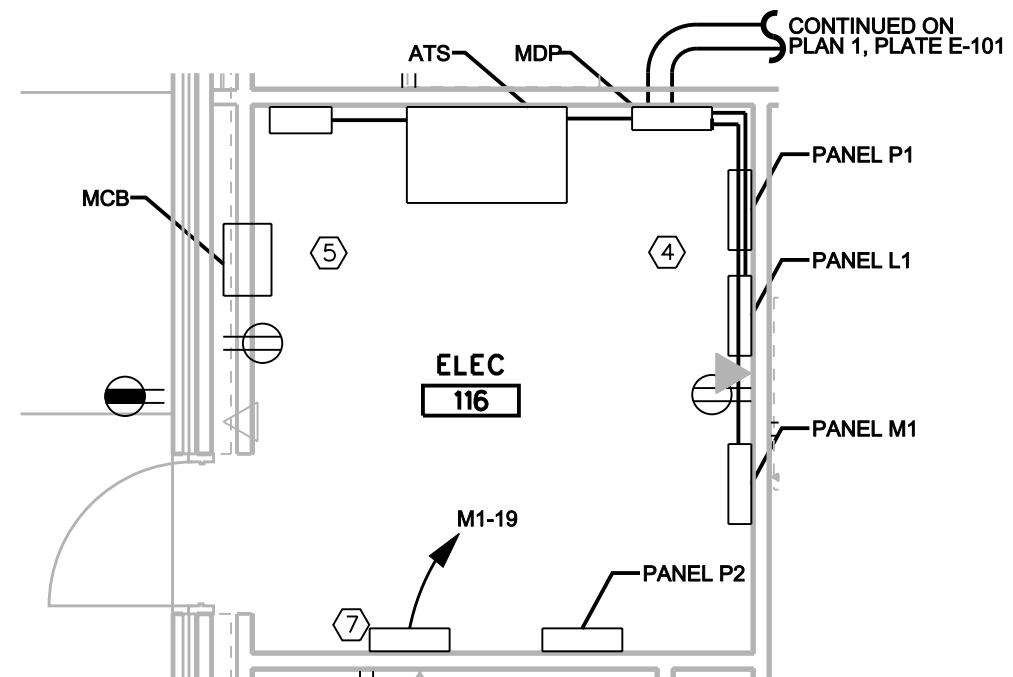
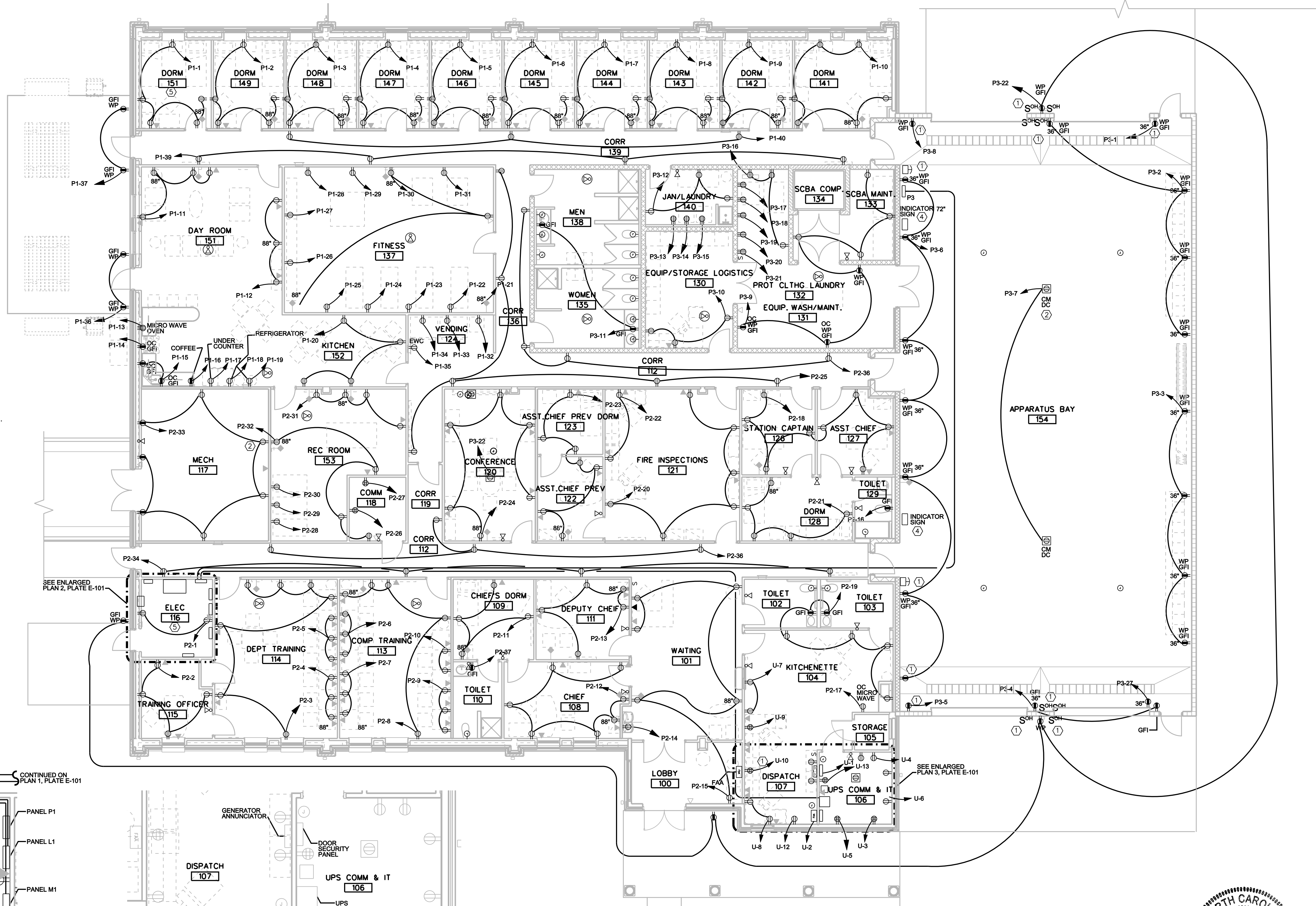


GENERAL NOTES

1. ALL RECEPTACLES POWER CIRCUITS FOR THE DORM ROOMS SHALL BE PROTECTED WITH ARC FAULT CURRENT CIRCUIT BREAKERS PER UFC 3-520-01.
2. ALL RECEPTACLES IN GARAGE SHALL BE GFCI PROTECTED.
3. COORDINATE LOCATION OF EQUIPMENT WITH ALL OTHER DISCIPLINES.
4. SEE ARCHITECTURAL DRAWINGS FOR FIRE RATING OF WALLS.
5. SEE E-001 POWER PLAN-1 FOR RECEPTACLE CIRCUITING. RECEPTACLE CIRCUITING IS NOT SHOWN ON ENLARGED PLANS.

PLAN NOTES

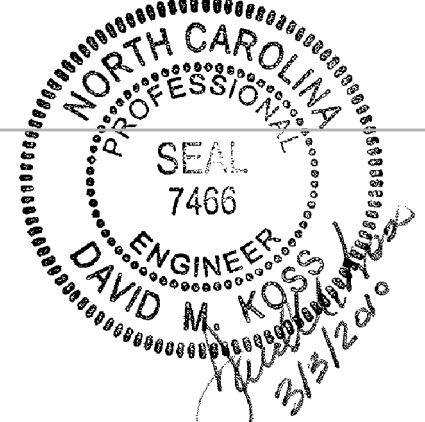
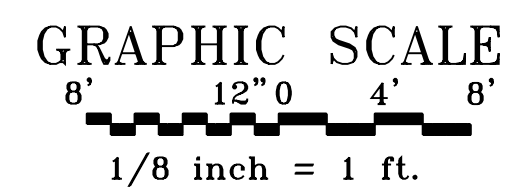
1. PROVIDE OVERHEAD DOOR OUTLET WITH CONDUIT TO DOOR AND FOR INTERIOR AND EXTERIOR CONTROLS. INTERIOR CONTROL IS 3 BUTTON (UP, DOWN, STOP). EXTERIOR CONTROL IS KEY OPERATED SWITCH FOR "UP". EACH DOOR SHALL BE PROVIDED WITH INDIVIDUAL CONTROLS. ALL DOOR CONTROLS SHALL BE MOUNTED AT 60" AFF.
- OVERHEAD DOOR HEATING OPERATIONS: ACTIVATION OF ANY CONTROL WILL OPEN ALL DOORS AND DEACTIVATE APPARATUS BAY HEATING. WHEN APPARATUS BAY DOORS ARE CLOSED APPARATUS BAY HEATING IS ENERGIZED.
2. PROVIDE JUNCTION BOX FOR WATER CLOSET FLUSH VALVE SENSORS AND ASSOCIATED TRANSFORMER. MOUNTING ABOVE LAY-IN CEILING. MOUNT TRANSFORMER PER MANUFACTURER RECOMMENDATIONS. CONNECT LOCAL BATHROOM RECEPTACLE.
3. PROVIDE JUNCTION BOX FOR URINAL FLUSH VALVE SENSORS AND ASSOCIATED TRANSFORMER. MOUNT ABOVE LAY-IN CEILING. AND INSTALL PER MANUFACTURER'S RECOMMENDATIONS.
4. INSTALL PANELBOARDS AND ALL ASSOCIATED FEEDER AND BRANCH CIRCUITS AS INDICATED ON PANELBOARD SCHEDULES. SEE DWGS E-600 AND E-601.
5. INSTALL MCB AND MAIN SERVICE FEEDER FROM THE SECONDARY SIDE OF THE UTILITY TRANSFORMER. SEE ELECTRICAL SITE PLAN AND ELECTRICAL ONE-LINE DIAGRAM FOR COORDINATION.
6. INSTALL AUTOMATIC TRANSFER SWITCH (ATS) AND ASSOCIATED POWER CONTROL FEEDERS AS INDICATED. SEE ELECTRICAL SITE PLAN AND ELECTRICAL ONE-LINE DIAGRAM FOR COORDINATION.
7. BUILDING AUTOMATION SYSTEM FOR MECHANICAL CONTROL.



1 POWER PLAN
SCALE: 1/8" = 1'-0"

2 ENLARGED ELECTRICAL ROOM POWER PLAN
SCALE: 1/4" = 1'-0"

3 ENLARGED DISPATCH & UPS ROOM POWER PLAN
SCALE: 1/4" = 1'-0"



3 MARCH 2010 BUILDING DESIGN FINAL DESIGN FINAL DESIGN FOR CONSTRUCTION

15TH STREET FIRE STATION
FORT STEWART, GEORGIA
POWER PLAN -
FIRE STATION

SHEET IDENTIFICATION
E-101
SHEET 107 OF 117

DESIGNED BY: SMH	CHK BY: JAC	DATE: 28-JUL-2009
DRAWN BY: SMH	DATE PLOTTED: 03/03/10	PROJECT NO. / CONTRACT NO. / FILE NUMBER: W120709-08-003 / XX-XXXXXX
U.S. ARMY CORPS OF ENGINEERS HUNTSVILLE CENTER	100% PRE-FINAL DESIGN	11/06/09
	FINAL DESIGN FOR CONSTRUCTION	03/03/10

MARK	DESCRIPTION	DATE	APPR.	DATE	APPR.

