

LIGHTING FIXTURE SCHEDULE						
DESIGNATION	DESCRIPTION	MOUNTING	VOLTS	LAMPS NUMBER WATTS	TYPE	LITHONIA CATALOG NUMBER (UNLESS OTHERWISE NOTED)
A	PARAMAX PARABOLIC TROFFER 3' LVR 2' X 4' 4LP 18-CELL SEMI-SPEC LVR ELEC	CEILING	120	4 32	T8	2PM3N G B 4 32 18LD MVOLT
AL	ALARM LIGHT - INCANDESCENT WALL MOUNTED	WALL	120	1 40	INCAND	PROGRESS P2694-68
B	PARAMAX PARABOLIC TROFFER 3' LVR 2' X 4' 3LP T8 18-CELL SEMI-SPEC LVR 1/3 ELEC	CEILING	120	3 32	T8	2PM3N G B 3 32 18LD MVOLT 1/3GEB10S
B-1	PREMIUM TROFFER 2' X 4', (3) LAMP T8, ACRYLIC PRISMATIC LENS, 125" THICK IN STEEL DOOR FRAME, SPECULAR SILVER REFLECTIVE INSERTS, 1/3 MULTIVOLT ELECTRONIC BALLAST	CEILING	120	3 32	T8	2GT8 3 32 A12 MVOLT 1/3GEB10S
C	PARAMAX PARABOLIC TROFFER 3' LVR 2' X 2' 2LP T8U 9 CELL LO IRR SEMI-SPEC LVR 1/3 ELEC	CEILING	120	2 31	T8	2PM3N G B 3 17 9LD MVOLT 1/3GEB10S
C-1	RT8B, VOLUMETRIC LIGHTING, 2 X 2, 2 LAMP, F17T8, INTERNAL HIGH PERFORMANCE ANANOD REFLECTOR	CEILING	120	2 17	T8	2RT8B 217 MVOLT GEB10S L835HT8 EL
D	PRECEDENT WALL BRKT 2 2LMP T8	WALL	120	2 17	T8	WP 2 17 DO MVOLT GEB10S
H	FANLIGHT	CEILING	120	1 13	FLRSCNT	679FLT
J	LOW PROFILE WRAP, 10" X 4' 2LP T8 PRISMATIC ELEC	CEILING	120	2 32	T8	LB 2 32 MVOLT GEB10S
K	STANDARD INDUSTRIAL, 4' 2LP T8 ELEC	CEILING	120	2 32	T8	L835HT8 2 32 MVOLT GEB10S
L	6" OPEN DOWNLIGHT SPECULAR REFLECTOR	CEILING	120	1 32	DTT	LF8N 1/32TRT F801A CGL MVOLTADEZ
M	6" LENSED DOWNLIGHT WITH DROP PRISMATIC PLASTIC LENS, PLASTIC FLANGE	CEILING	120	2 13	DTT	LF8 2/13DTT MVOLT GMF
N	PRECEDENT WALL BRKT 4' 2 LMP	WALL	120	2 32	T8	WP 2 32 DO MVOLT GEB10S
P	6" OPEN DOWNLIGHT WITH WHITE BAFFLE, DIFFUSE UPPER REFLECTOR	CEILING	120	2 26	DTT	LF8N 2/26DTT F883W MVOLT ADEZ
Q	COMPACT FLUORESCENT DOWNLIGHTING	CEILING	120	1 26	TRT	LF8N 1/26-4TRT F8L54 MVOLT ADEZ
S	1 X 4 HIGH BAY FOR (3) S4W TSHO LAMPS, FOCUS BEAM REFLECTOR WITH UPLIGHT SLOTS	CEILING, CHAIN	120	3 54	TSHO	FG814 2 54TSHO F1X20U MVOLT GEB10PS LP841
T	TWP, METAL HALIDE	WALL	120	1 70	MTL HLDE	TWP 100M 120 PE LPI
X	EXIT LIGHT	WALL/ CLING	120	1 1.5	LED	LRP 1 RC 120/277

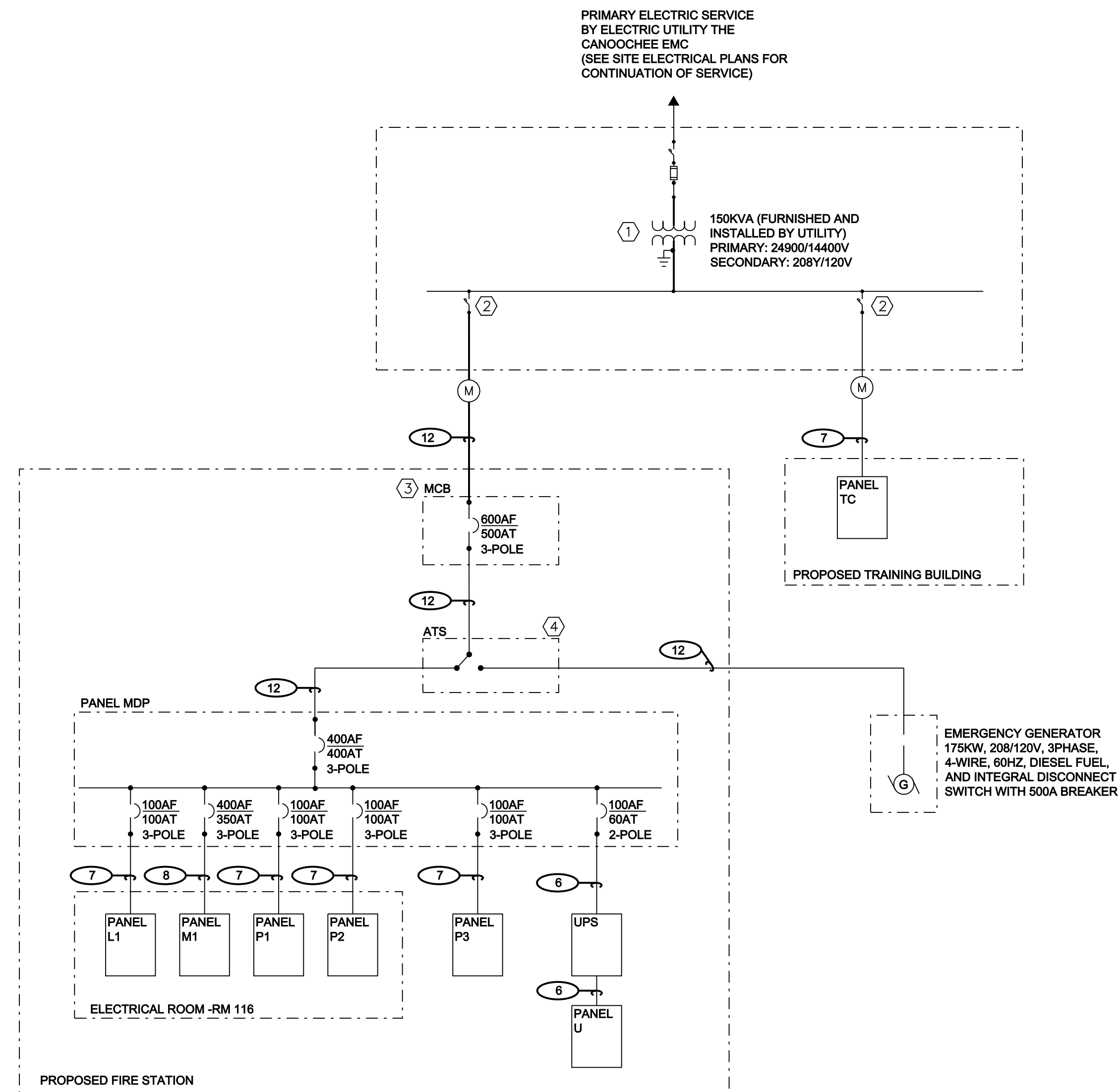
FEEDER SCHEDULE						
FEEDER	PHASE	NEUTRAL	GROUND	CONDUCTOR	CONDUIT	REMARKS
DESIGNATOR	SIZE	SIZE	SIZE	INSULATION	SIZE	
<b>600V CLASS</b>						
1	(1) #12	#12	#12	THHN	3/4"	
2	(2) #12	-	#12	THHN	3/4"	
3	(3) #12	#12	#12	THHN	3/4"	
4	(3) #10	#10	#10	THHN	3/4"	
5	(2) #4	#4	#6	THHN	1"	
6	(3) #4	#4	#6	THHN	1-1/2"	
7	(3) 1/0	1/0	#6	THHN	2"	
8	(3) 400	400	#3	THHN	3-1/2"	
9	(3) 500	500	#4	XHHW	3-1/2"	
10	(1) #10	#10	#10	THHN	3/4"	
11	(3) #8	#8	#10	THHN	3/4"	
12	2 SETS (3) 250	2 SETS 250	2 SETS #2	XHHW	4"	

### GENERAL NOTES

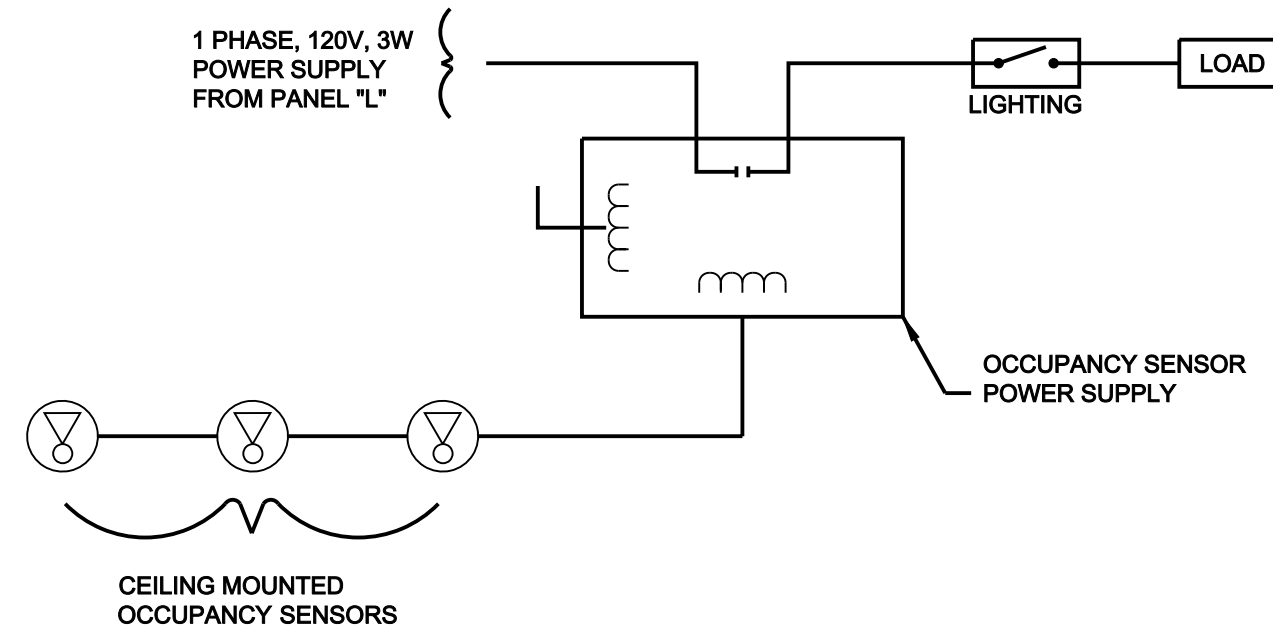
1. THE PRIMARY DISTRIBUTION SYSTEM AT FORT STEWART IS OWNED, MANAGED, AND MAINTAINED BY A PRIVATIZED ELECTRIC UTILITY COMPANY. THE PRIVATIZED ELECTRIC UTILITY AT FORT STEWART IS CANOOCHEE EMC.
2. THE ELECTRIC UTILITY IS PROVIDING INDIVIDUAL METERING FOR THE FIRE STATION AND TRAINING BUILDING.

### PLAN NOTES

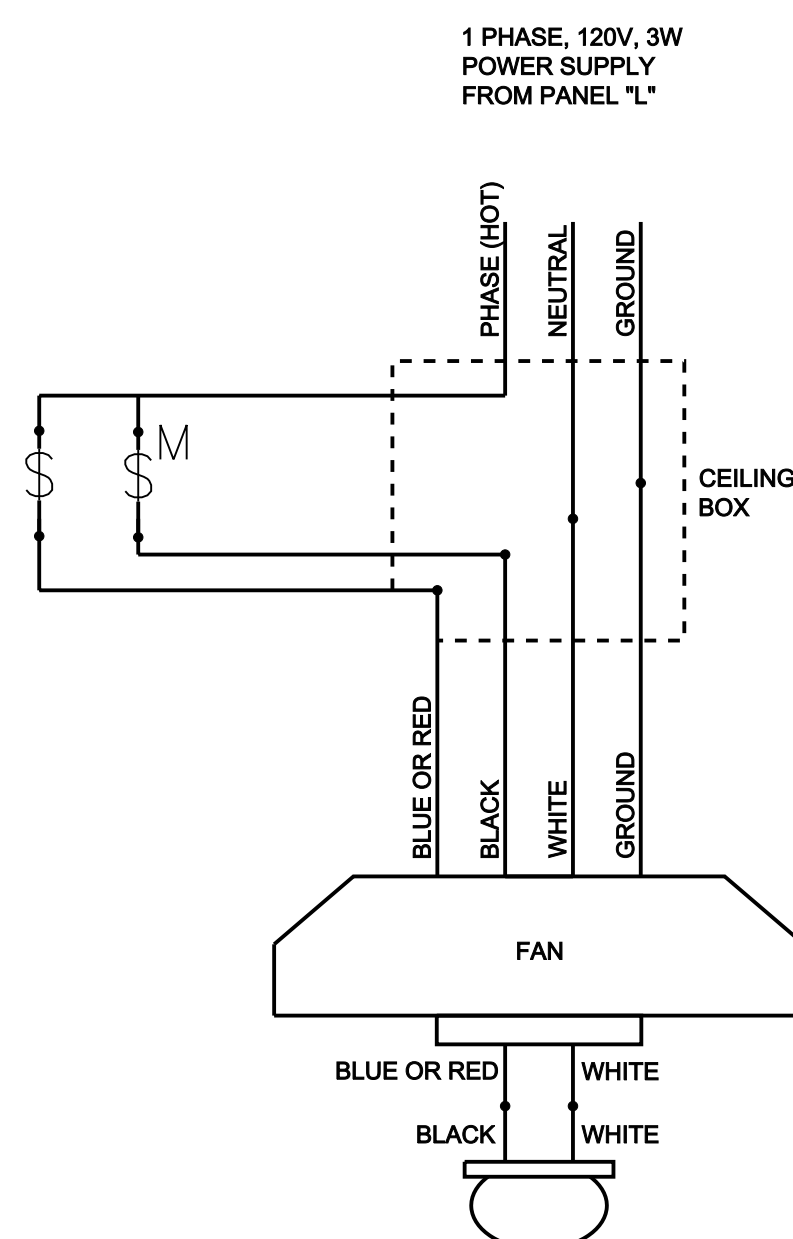
- 1 PRIMARY DISTRIBUTION WITHIN THE PROJECT SHALL BE PROVIDED BY THE ELECTRIC UTILITY COMPANY. ALL PRIMARY CONDUCTORS TO UTILITY TRANSFORMER, DUCTLINES, MANHOLES, SWITCHES, SECTIONALIZING CABINETS, TRANSFORMERS WITH CONCRETE PADS, GROUNDING AND METERING SHALL BE PROVIDED BY THE ELECTRIC UTILITY. THE ELECTRIC UTILITY SHALL PROVIDE INSTALLATION OF THE PRIMARY DISTRIBUTION SYSTEM UNLESS OTHERWISE NOTED ON THE CONTRACT DOCUMENTS.
- 2 CONTRACTOR SHALL BE RESPONSIBLE FOR INSTALLING SECONDARY SERVICE CABLE FROM BUILDING SERVICE EQUIPMENT TO SECONDARY COMPARTMENT OF THE TRANSFORMER.
- 3 PROVIDE 100% SERVICE ENTRANCE RATED DISCONNECT IN ENCLOSURE.
- 4 PROVIDE 500A ATS



2 ONE LINE DIAGRAM SCALE: NTS



4 LIGHTING OCCUPANCY CONTROL DIAGRAM SCALE: NTS



3 CEILING FAN/LIGHT CONTROL DIAGRAM SCALE: NTS

**US Army Corps of Engineers**  
Huntsville Center

MARK	DESCRIPTION	DATE	APPR.
A	100% PRE-FINAL DESIGN	11/06/09	
B	FINAL DESIGN FOR CONSTRUCTION	03/03/10	

DESIGNED BY: SAH  
DRAWN BY: JAC  
CHECKED BY: JAC  
SUBMITTED BY: JAC

DATE: 28-JUL-2009  
SCALE: AS NOTED  
PLOT SCALE: AS NOTED

CONTRACT NO.: W912DY-08-R-003  
KCI TECHNOLOGIES  
FILE NUMBER: XX-XXXXXX

FILE NAME: FS\_SHT\_M-101

U.S. ARMY CORPS OF ENGINEERS  
HUNTSVILLE CENTER

15TH STREET FIRE STATION  
FORT STEWART, GEORGIA

**SCHEDULES AND ONE LINE DIAGRAM**

SHEET IDENTIFICATION  
**E-002**  
SHEET 105 OF 117

3 MARCH 2010 BUILDING DESIGN FINAL DESIGN FOR CONSTRUCTION

