

1

2

3

4

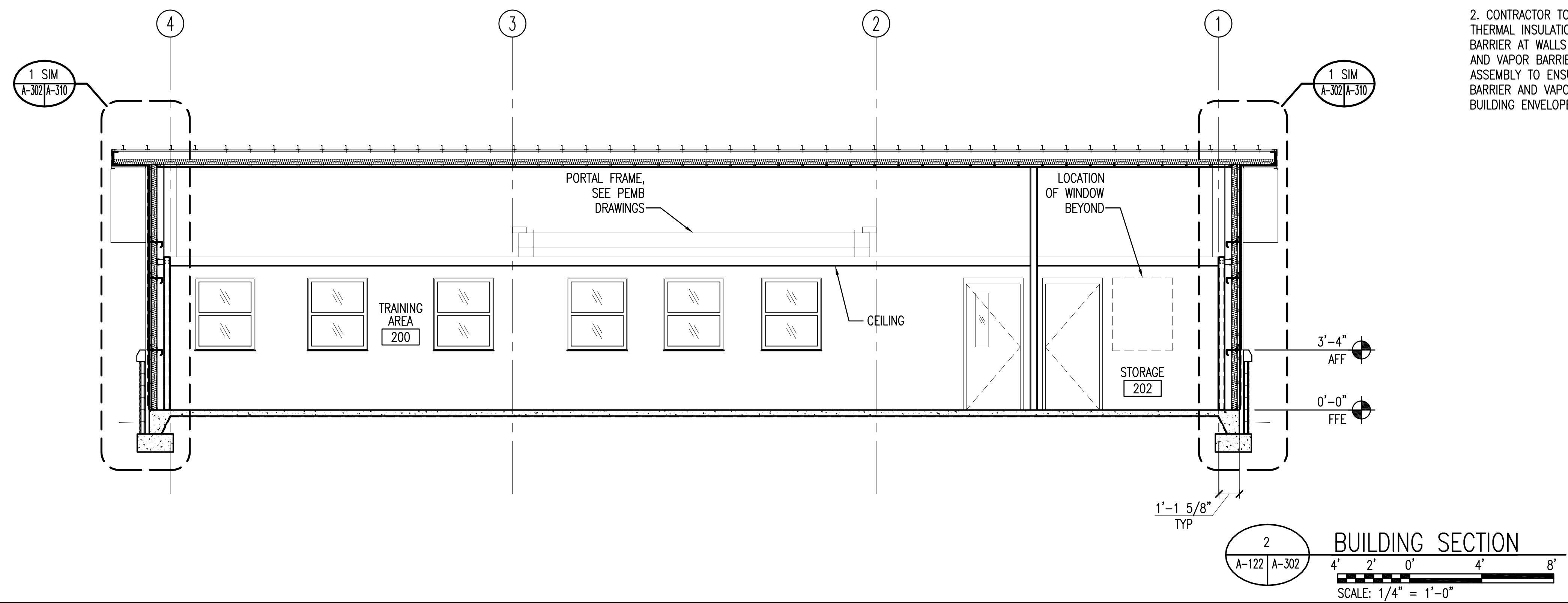
5

GENERAL NOTES:

1. PRE-ENGINEERED METAL BUILDING (PEMB) COMPONENTS AND ASSEMBLY SHOWN DIAGRAMMATICALLY FOR COORDINATION. REFER TO PEMB DRAWINGS FOR ACTUAL CONFIGURATION AND ASSEMBLY COMPONENTS.
2. CONTRACTOR TO COORDINATE EXTENT OF THERMAL INSULATION AND MEMBRANE VAPOR BARRIER AT WALLS WITH THERMAL INSULATION AND VAPOR BARRIER INCLUDED WITH PEMB ASSEMBLY TO ENSURE CONTINUOUS THERMAL BARRIER AND VAPOR BARRIER AT EXTERIOR BUILDING ENVELOPE.



MARK	DESCRIPTION	DATE	APPR.
A	65% PRE-FINAL DESIGN	7/29/09	
B	100% FINAL DESIGN	9/18/09	

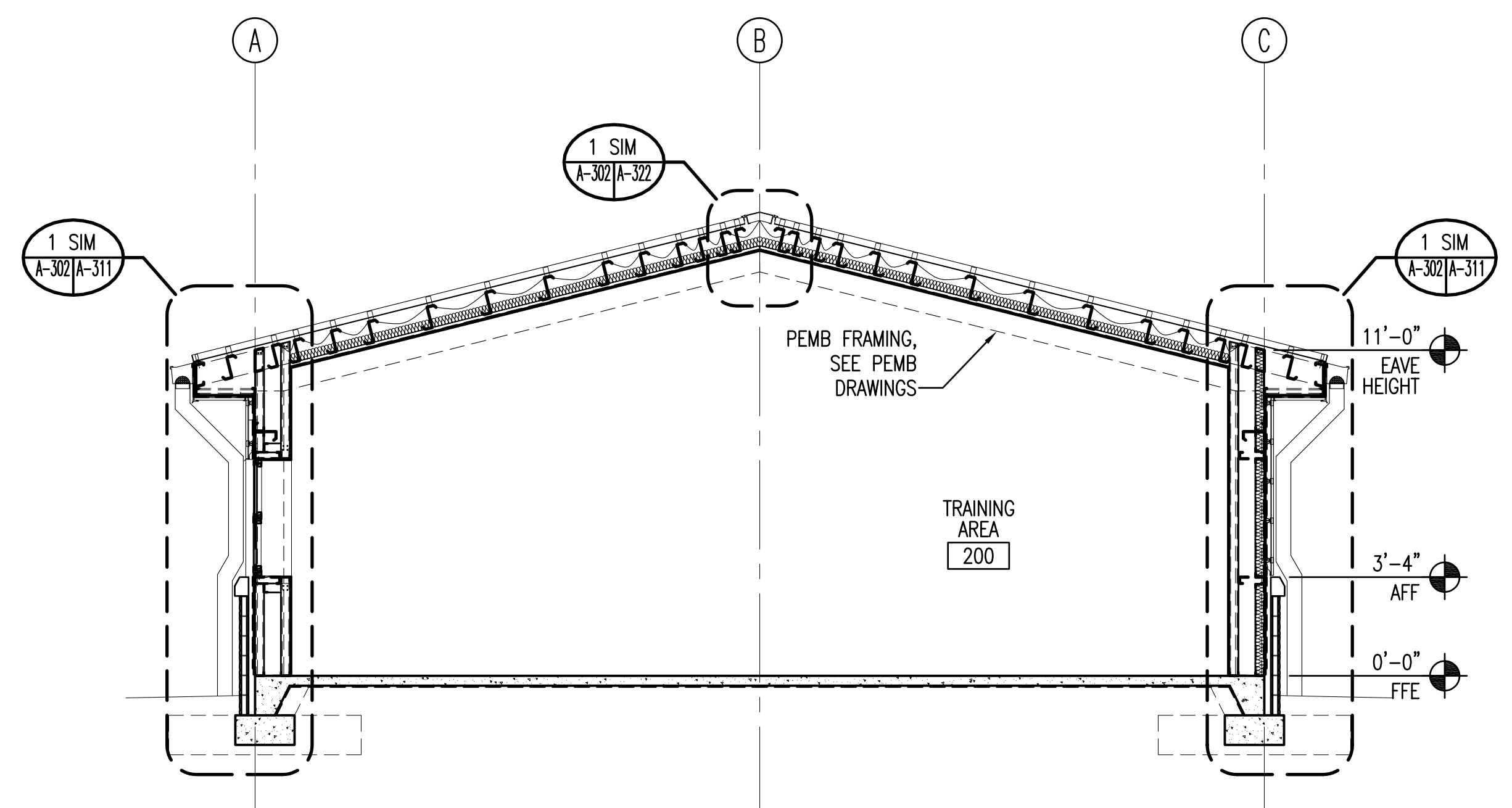


D

C

B

A

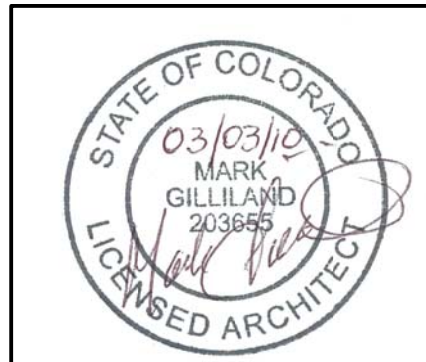


03 MARCH 2010 FINAL DESIGN ISSUED FOR CONSTRUCTION

DESIGNED BY: U.S. ARMY CORPS OF ENGINEERS HUNTSVILLE CENTER	DESIGNED BY: NIC	DATE: 03/03/10
U.S. ARMY CORPS OF ENGINEERS HUNTSVILLE CENTER	CONTRACT NO.: W912DY-09-2-003	FILE NUMBER:
STOA ARCHITECTS 121 EAST GOVERNMENT STREET PENSACOLA, FL 32502	FILE NAME:	

15TH STREET FIRE STATION
FORT STEWART, GEORGIA

OVERALL BUILDING SECTIONS



SHEET IDENTIFICATION
A-302
SHEET 44 OF 117