

1

2

3

4

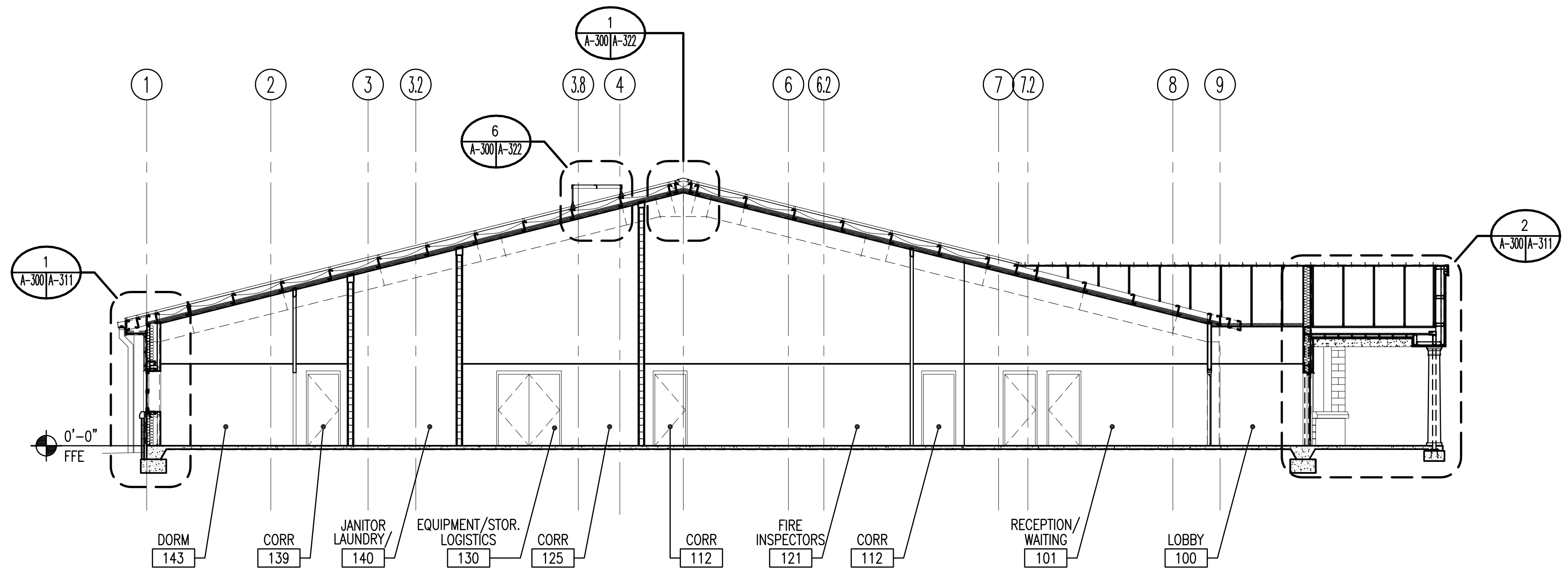
5

GENERAL NOTES:

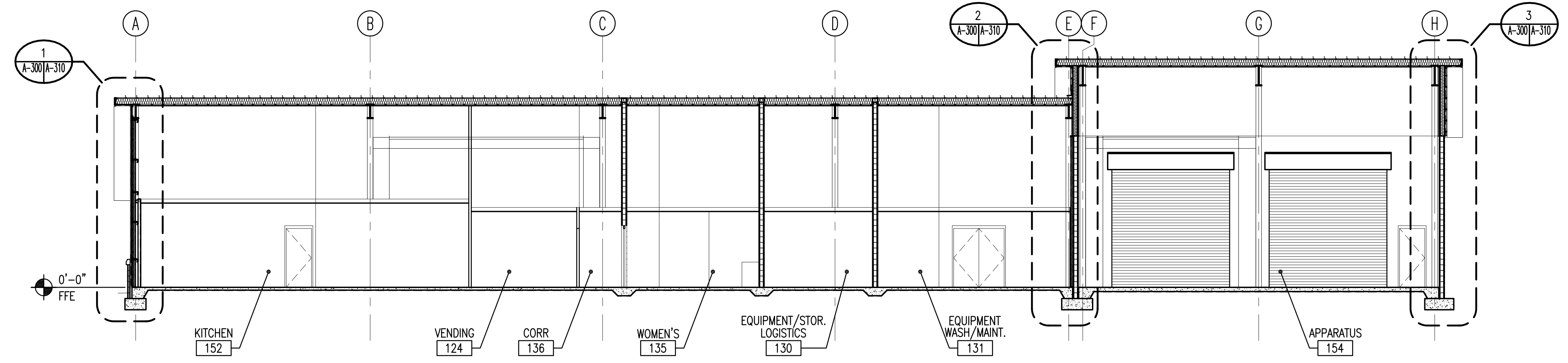
- PRE=ENGINEERED METAL BUILDING (PEMB) COMPONENTS AND ASSEMBLY SHOWN DIAGRAMMATICALLY FOR COORDINATION. REFER TO PEMB DRAWINGS FOR ACTUAL CONFIGURATION AND ASSEMBLY COMPONENTS.
- CONTRACTOR TO COORDINATE EXTENT OF THERMAL INSULATION AND MEMBRANE VAPOR BARRIER AT WALLS WITH THERMAL INSULATION AND VAPOR BARRIER INCLUDED WITH PEMB ASSEMBLY TO ENSURE CONTINUOUS THERMAL BARRIER AND VAPOR BARRIER AT EXTERIOR BUILDING ENVELOPE.



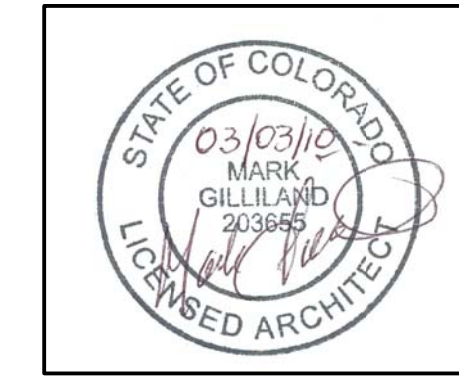
| MARK | DESCRIPTION | DATE | APPR. |
|------|----------------------|---------|-------|
| A | 65% PRE-FINAL DESIGN | 7/29/09 | |
| B | 100% FINAL DESIGN | 9/18/09 | |



2 BUILDING SECTION
 A-121 | A-300
 SCALE: 1/8" = 1'-0"



1 BUILDING SECTION
 A-121 | A-300
 SCALE: 1/8" = 1'-0"



03 MARCH 2010 FINAL DESIGN ISSUED FOR CONSTRUCTION

| | | | |
|---|---|--|----------------------------------|
| DESIGNED BY: U.S. ARMY CORPS OF ENGINEERS HUNTSVILLE CENTER | DESIGNED BY: HM BK SUBMITTED BY: STOA ARCHITECTS | DATE: 03-MARCH-2010 10:05:10 AM W912DY-09-R-003 | CONTRACT NO.: W912DY-09-2-003 |
| FILE NAME: 121 EAST GOVERNMENT STREET PENSACOLA, FL 32502 | FILE NUMBER: AS NOTED | FILE NAME: AS NOTED | FILE NUMBER: AS NOTED |

15TH STREET FIRE STATION
 FORT STEWART, GEORGIA

OVERALL BUILDING SECTIONS

SHEET IDENTIFICATION
A-300
 SHEET 42 OF 117