

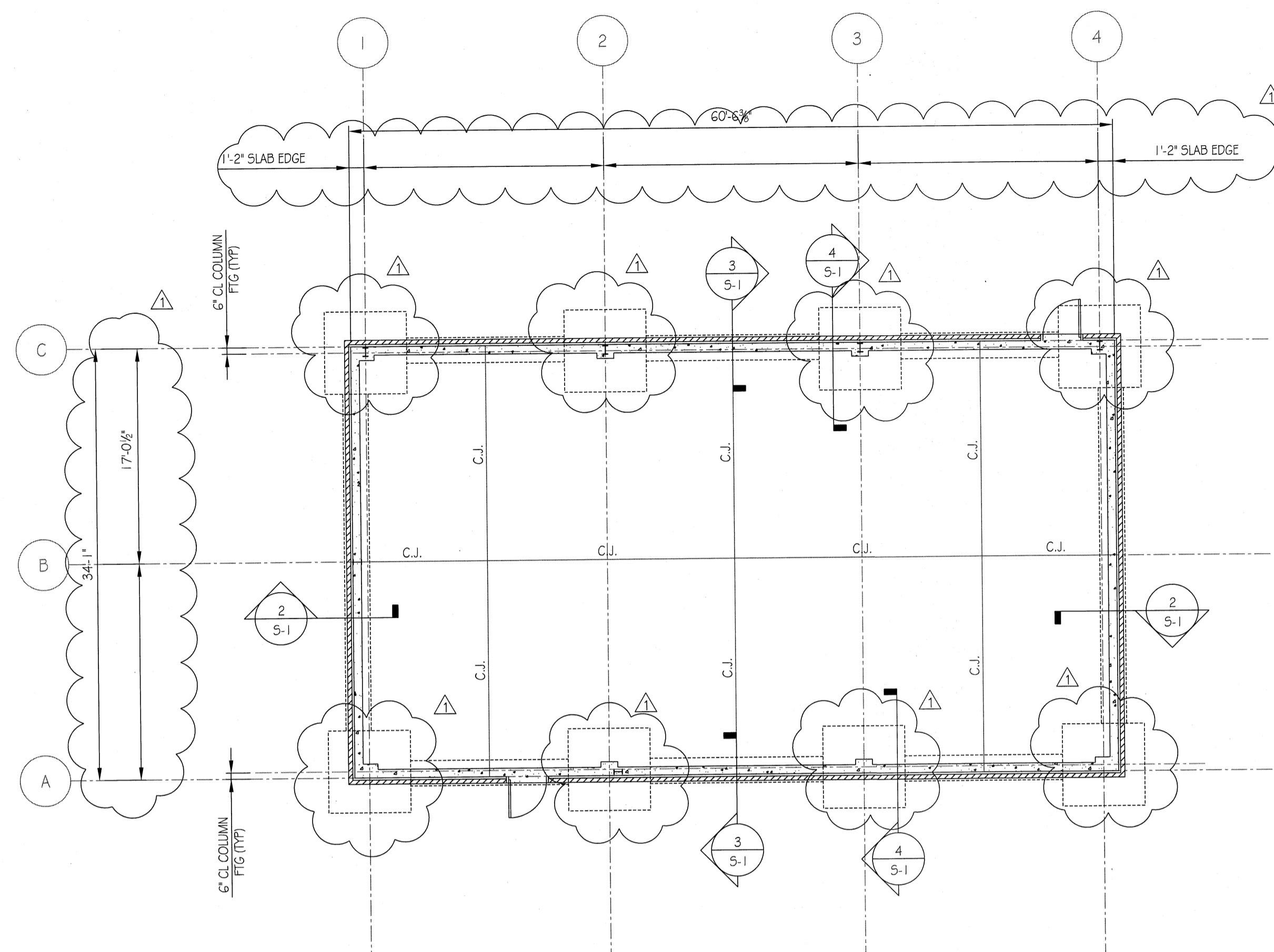
1

2

3

4

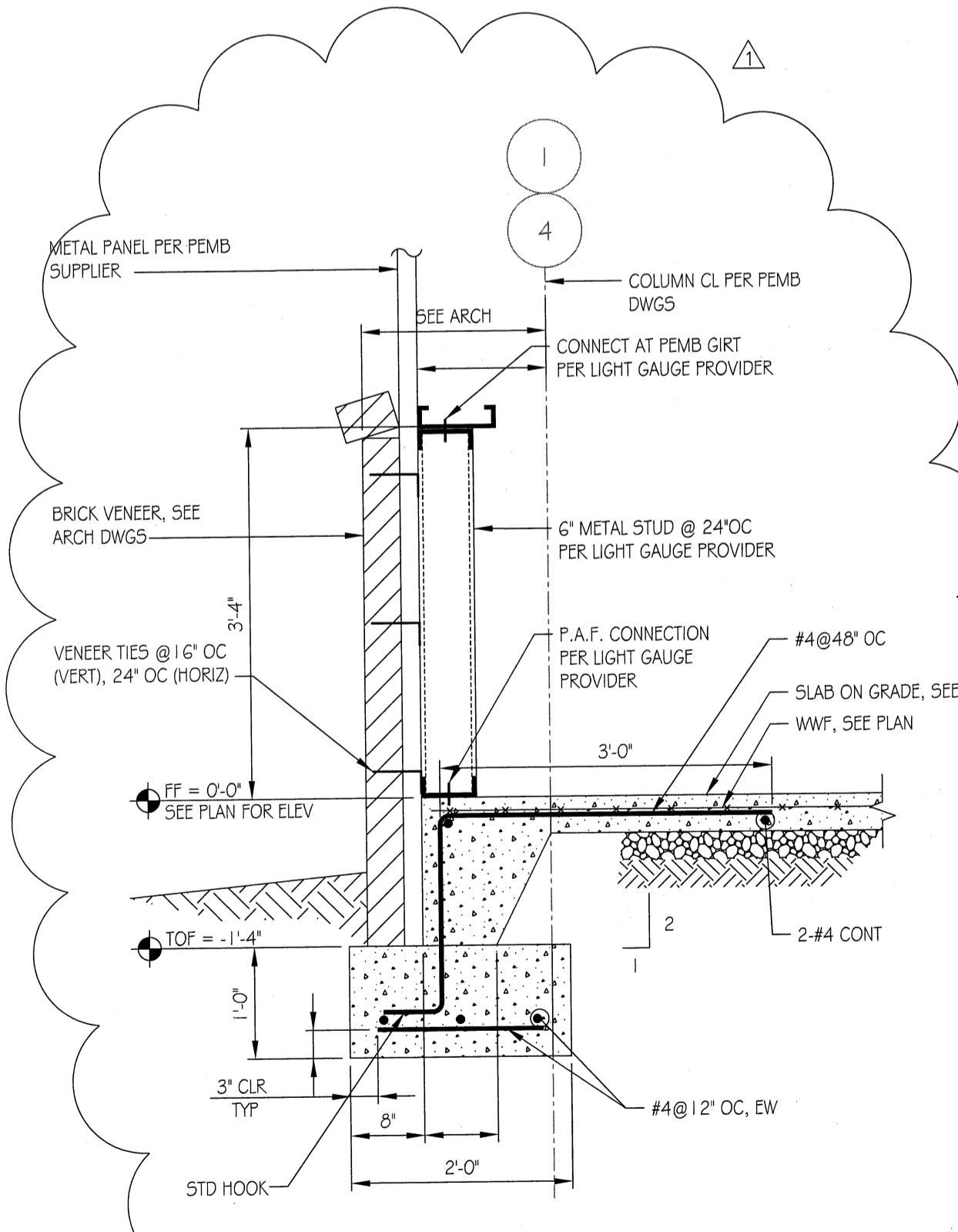
5



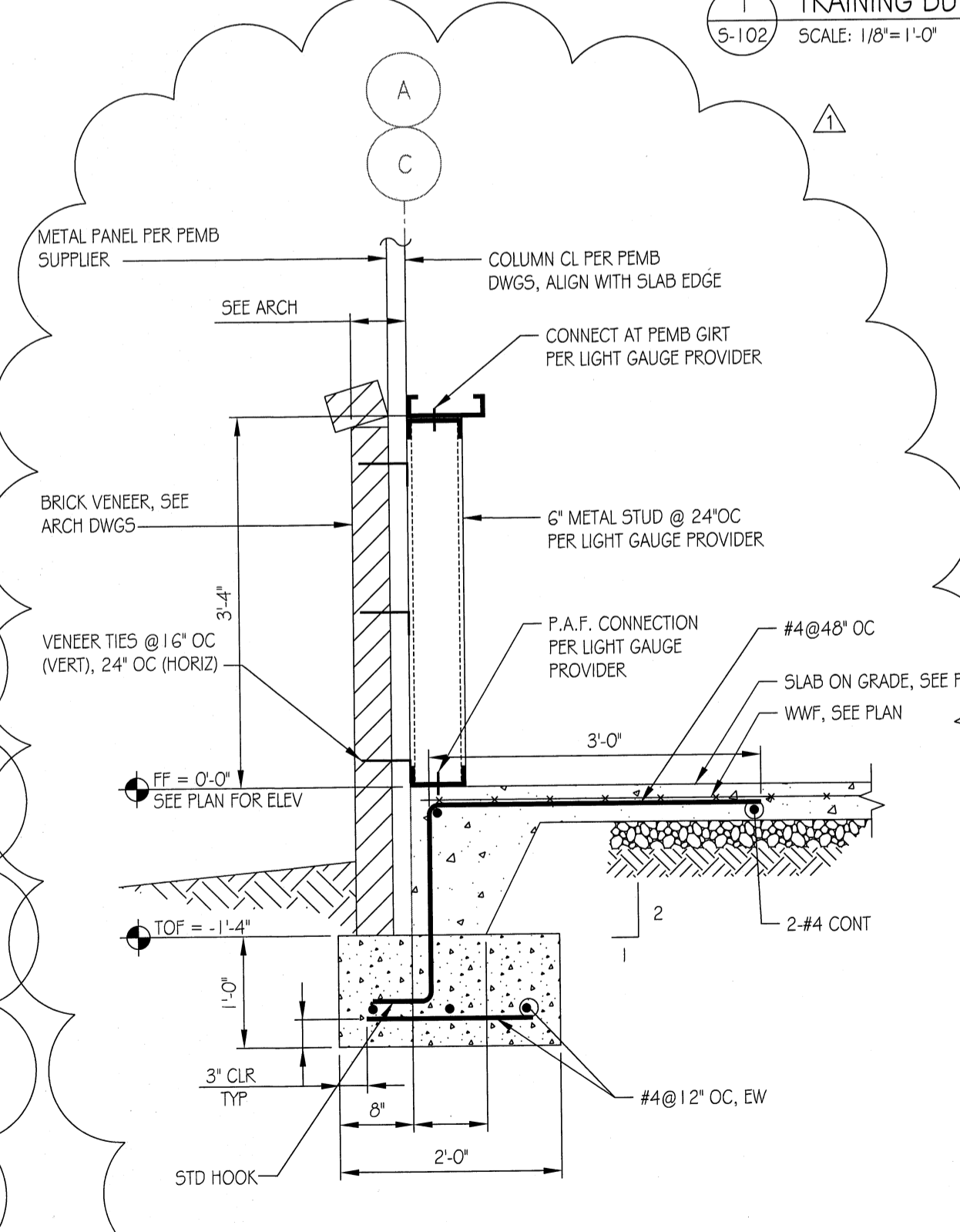
PLAN NOTES:

1. SLAB ON GRADE SHALL CONSIST OF 4" THICK NORMAL WEIGHT CONCRETE REINFORCED WITH 6" x 6" - W2.1 x W2.1 WELDED WIRE FABRIC (WWF) OVER 6 MIL VAPOR BARRIER AND 4" WASHED STONE BASE.
2. TYPICAL TOP OF SLAB ELEVATION SHALL BE 70.00' (DATUM 0'-0').
3. TOP OF FOOTINGS SHALL BE A MINIMUM OF 1'-4" BELOW FINISH FLOOR, TYPICAL.
4. CONTROL JOINTS ARE INDICATED ON PLAN THUS: C.J. REFER TO TYPICAL DETAILS (SHEET 5-5901) FOR ADDITIONAL INFORMATION.

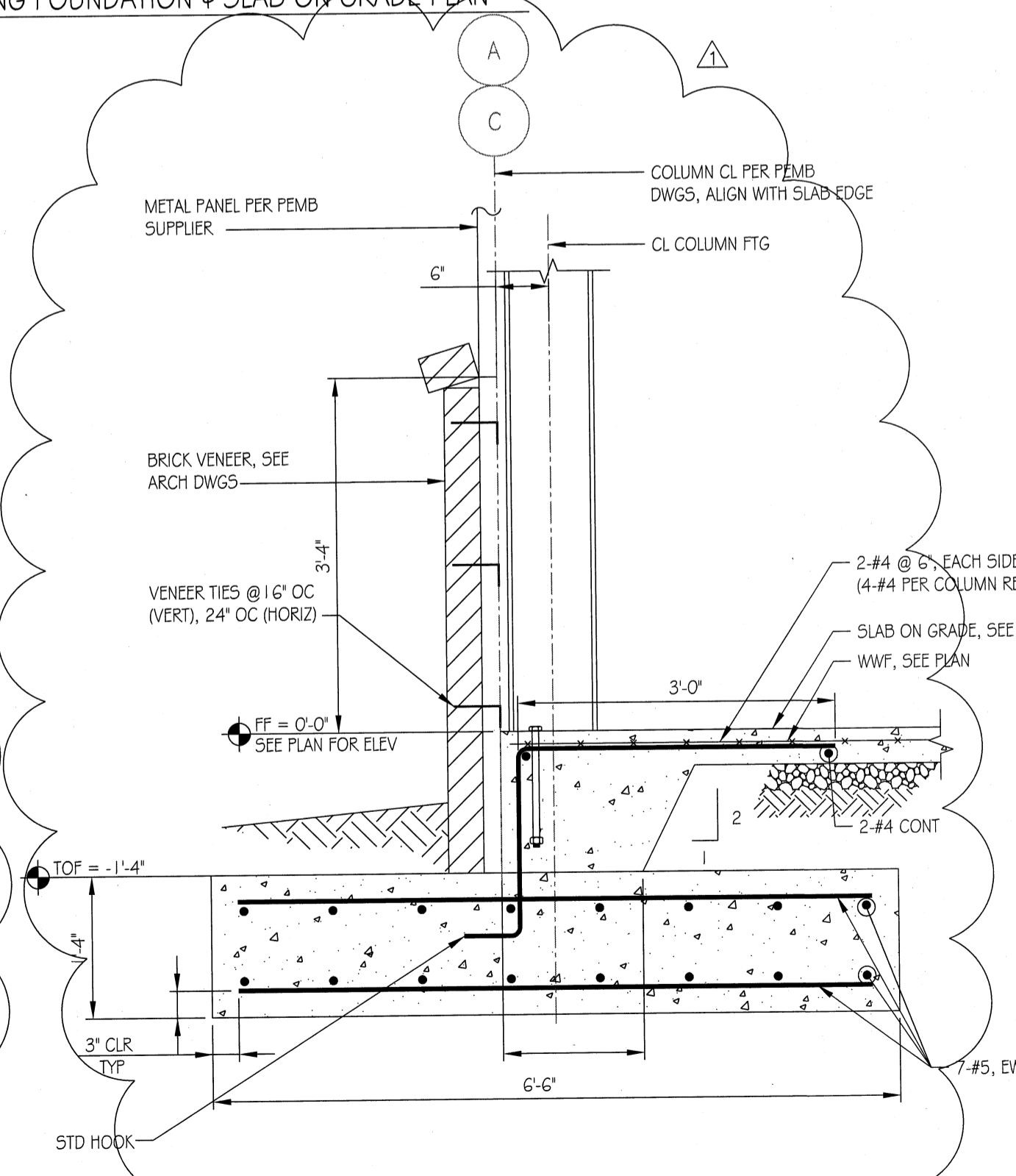
1 TRAINING BUILDING FOUNDATION # SLAB ON GRADE PLAN
 5-102 SCALE: 1/8"=1'-0"



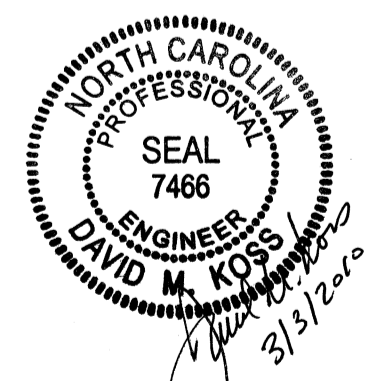
2 SECTION AT TYPICAL ENDWALL
 5-102 SCALE: 1/8"=1'-0"



3 SECTION AT TYPICAL SIDEWALL
 5-102 SCALE: 1/8"=1'-0"



4 SECTION AT TYPICAL COLUMN
 5-102 SCALE: 1/8"=1'-0"



ISSUED FOR CONSTRUCTION
 DESIGN COMPLETE
 04 SEPT 2009



KCI Associates of North Carolina, PA
 Engineers • Planners • Scientists • Construction Managers
 4601 Six Forks Road, Landmark Center II, Suite 220
 Raleigh, NC 27609-5210
 Phone (919) 783-9214
 Fax (919) 783-9566
 www.kci.com

STOA Architects
 121 EAST GOVERNMENT STREET
 PENSACOLA, FL 32502 (850)432-1912



MARK	DESCRIPTION	DATE	APPR.
1	MISC. STRUCTURAL REVISIONS	3/03/10	
0	DESIGN COMPLETE SUBMITTAL	9/04/09	

DESIGNED BY:	DATE:	SOLICITATION NO.:
DWN BY:	28-JULY-2009	WB12DY-09-R-0020
SUBMITTED BY:	CONTRACT NO.:	
KCI TECHNOLOGIES	WB12DY-09-C-0003	
PLOT SCALE/PLOT DATE:	FILE NUMBER:	
AS NOTED	7000000000	
AS/SD	FILE NAME:	
	AS/SD	

U.S. ARMY CORPS OF ENGINEERS
 HUNTSVILLE CENTER
 15TH STREET FIRE STATION
 FORT STEWART, GEORGIA
 TRAINING BUILDING
 FOUNDATION AND SLAB
 ON GRADE PLAN

SHEET IDENTIFICATION
S-102
 SHEET 29 OF 117