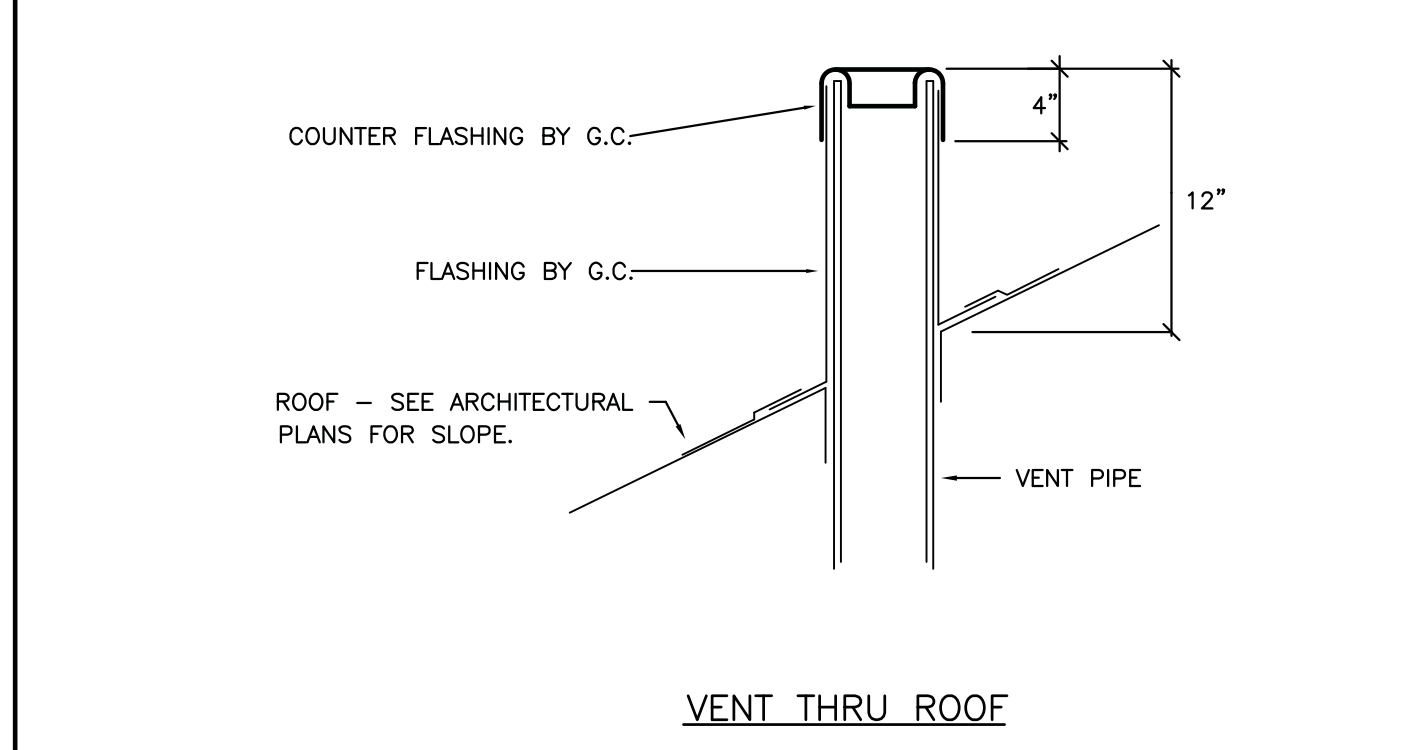


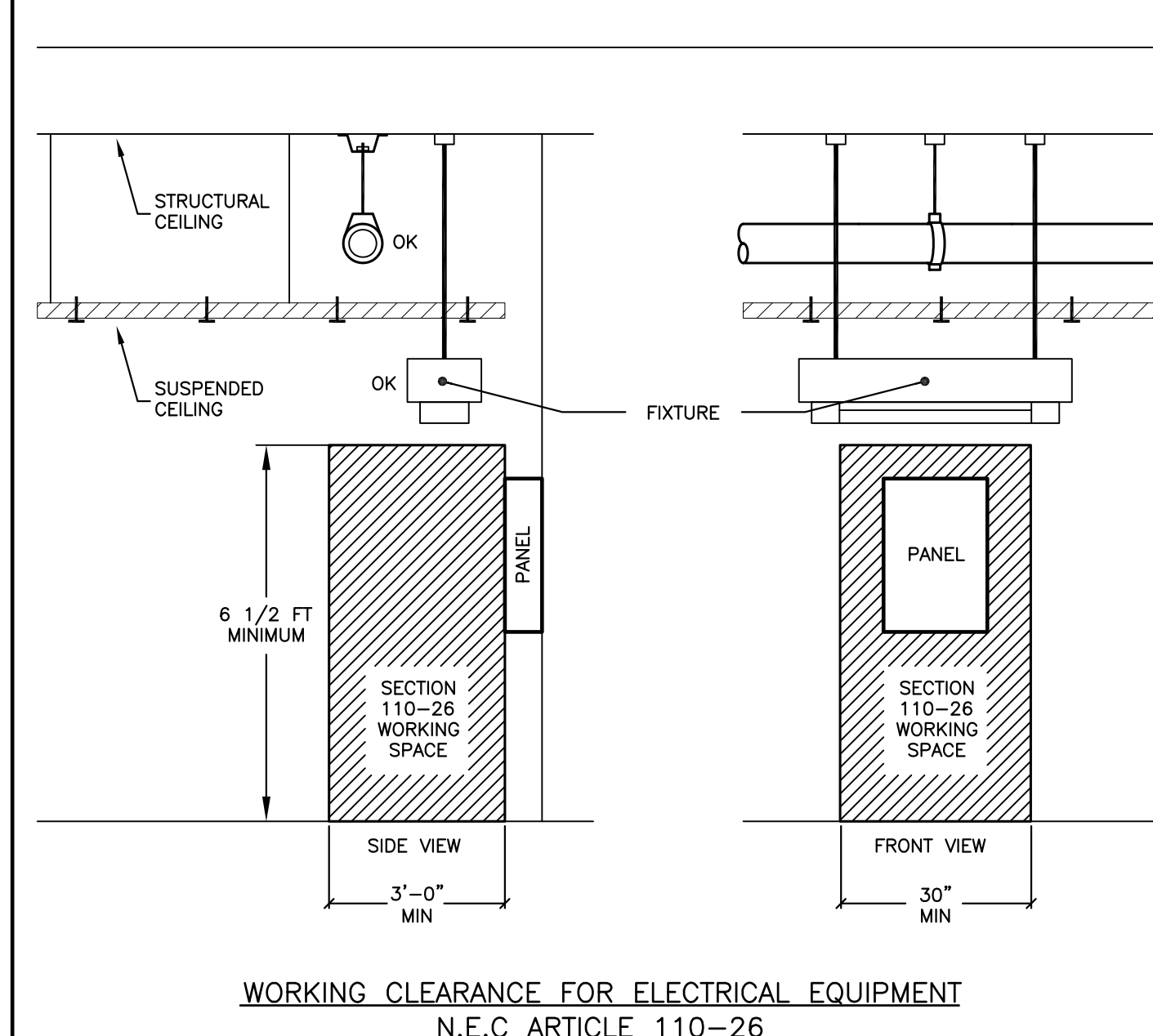
DETAIL
NOT TO SCALE

06



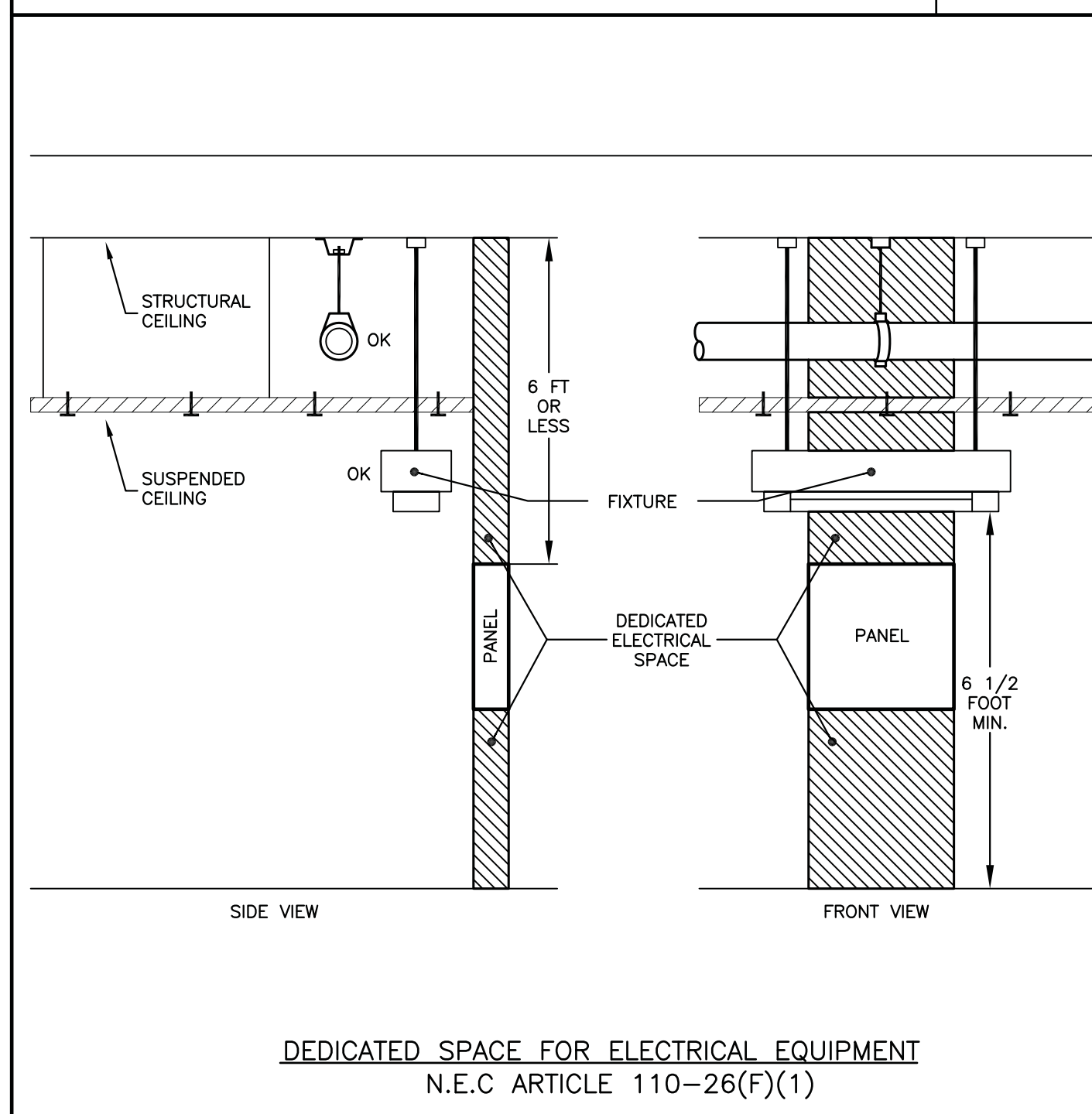
DETAIL
NOT TO SCALE

07



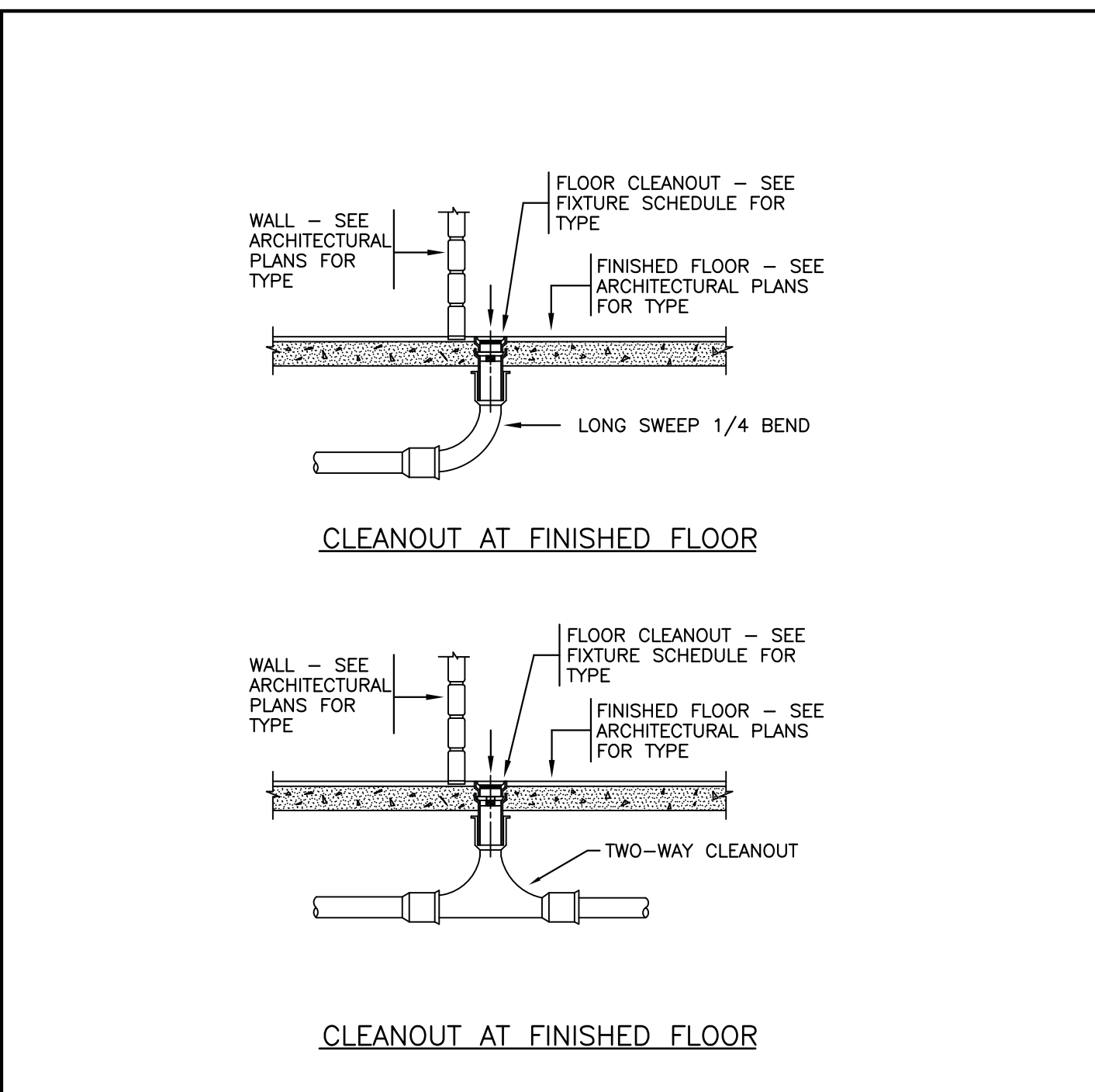
DETAIL
NOT TO SCALE

08



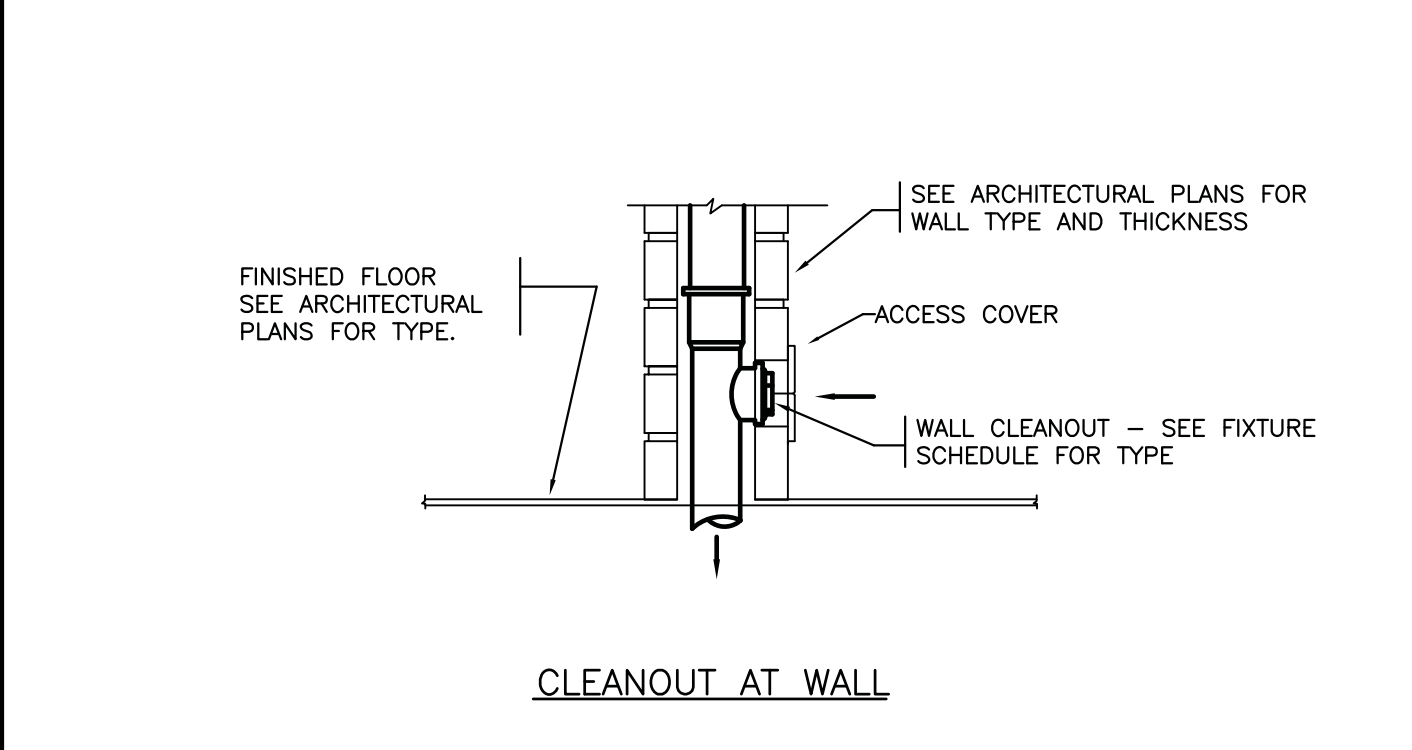
DETAIL
NOT TO SCALE

09



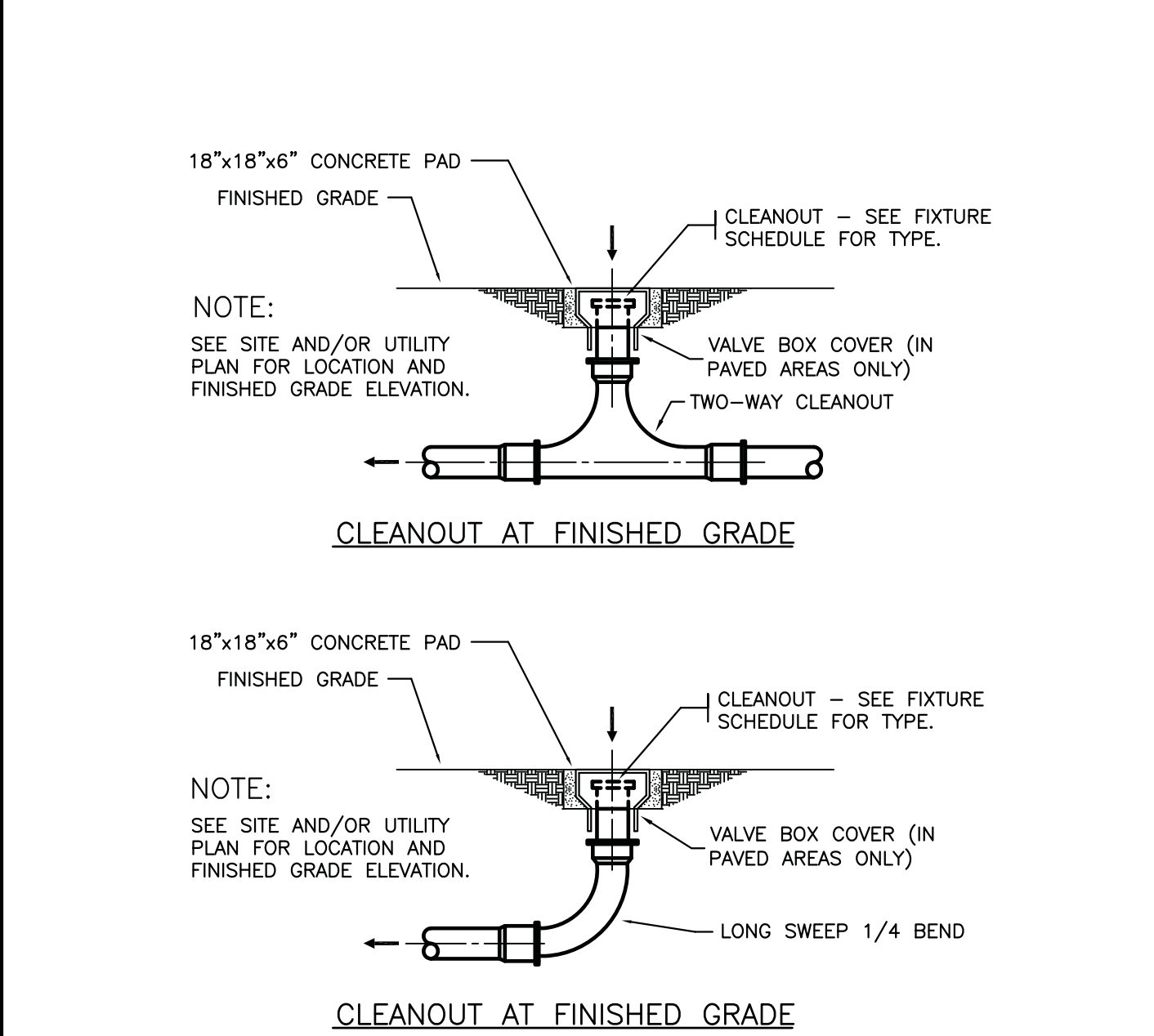
DETAIL
NOT TO SCALE

02



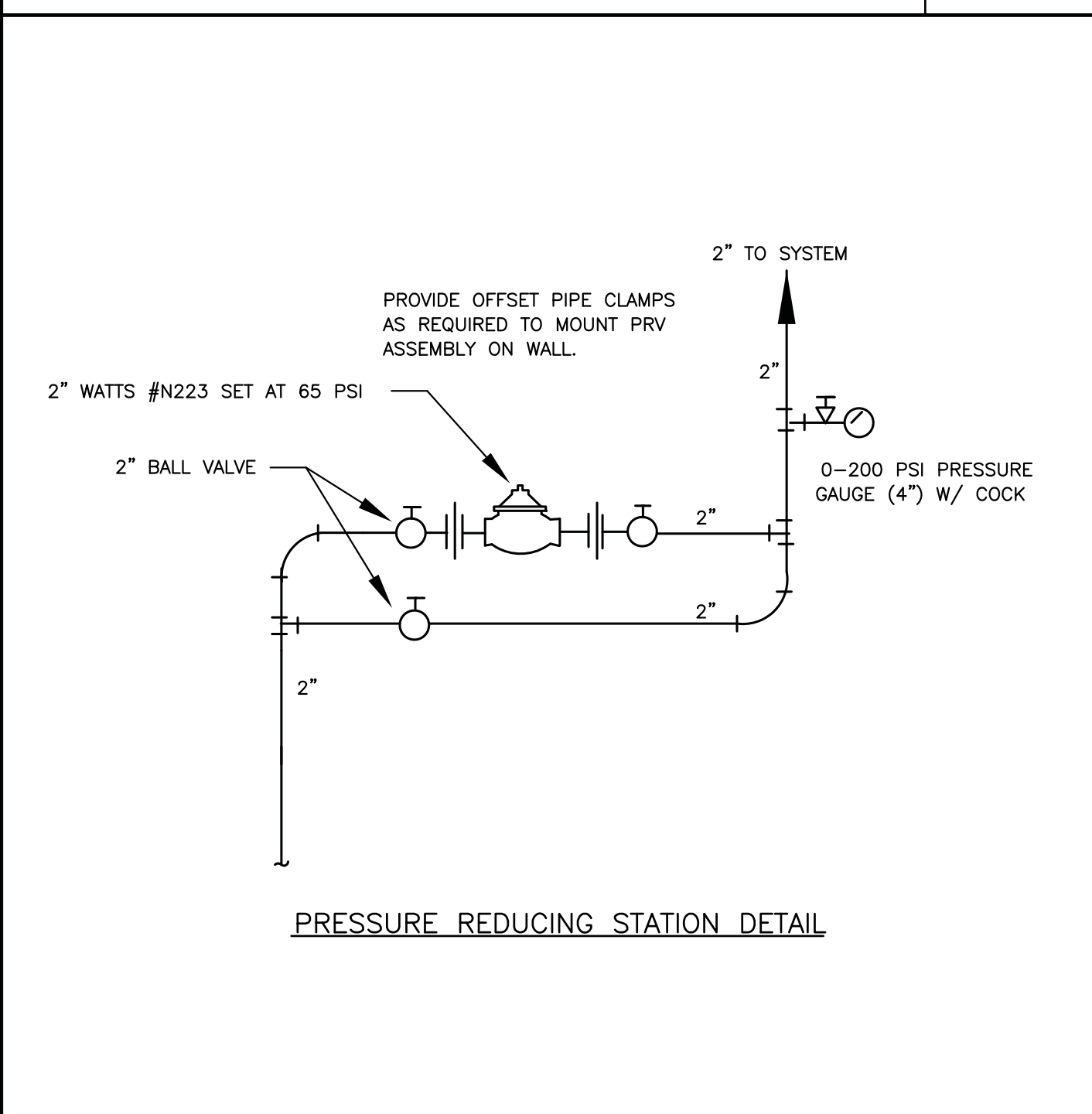
DETAIL
NOT TO SCALE

03



DETAIL
NOT TO SCALE

04



DETAIL
NOT TO SCALE

05

MARK	DESCRIPTION	REMARKS
WC-1	WATER CLOSET KOHLER, FLOOR MOUNTED, BOTTOM OUTLET, TOP SPUD, VITREOUS CHINA, WELLCOME TOILET, MODEL NO. K-4356, WITH ELONGATED BOWL, 1.6 GALLON FLUSH, SIPHON JET OPERATION, AND BOLT CAPS. PROVIDE WITH CHURCH PRODUCTS NO. 9500SSCI, EXTRA HEAVY DUTY SOLID PLASTIC, OPEN FRONT, ELONGATED SEAT WITH STAINLESS STEEL POSTS, STAINLESS STEEL SELF-SUSTAINING CHECK HINGES, AND STA-TITE FASTENING NUTS. PROVIDE SLOAN REGAL MODEL NO. 111-XL FLUSH VALVE.	MOUNT 16" A.F.F. TO TOP OF SEAT
WC-2	WATER CLOSET (HANDICAP ACCESSIBLE) KOHLER, FLOOR MOUNTED, BOTTOM OUTLET, TOP SPUD, VITREOUS CHINA, HIGHLIF TOILET, MODEL NO. K-4356, WITH ELONGATED BOWL, 1.6 GALLON FLUSH, SIPHON JET OPERATION, AND BOLT CAPS. PROVIDE WITH CHURCH PRODUCTS NO. 9500SSCI, EXTRA HEAVY DUTY SOLID PLASTIC, OPEN FRONT, ELONGATED SEAT WITH STAINLESS STEEL POSTS, STAINLESS STEEL SELF-SUSTAINING CHECK HINGES, AND STA-TITE FASTENING NUTS. PROVIDE SLOAN REGAL MODEL NO. 111-XL FLUSH VALVE.	MOUNT 19" A.F.F. TO TOP OF SEAT HANDLE ON WIDE SIDE OF STALL
U-1	URINAL KOHLER, WALL HUNG, DEXTER MODEL NO. K-5016-ET, TOP SPUD, VITREOUS CHINA, ELONGATED RIM, 1 GALLON FLUSH, SIPHON JET OPERATION, WITH SLOAN REGAL NO. 186-1-XL FLUSH VALVE. CARRIER SHALL BE JAY R. SMITH #0636 OR 0637 TO FIT INSTALLATION REQUIREMENTS.	MOUNT RIM 17" A.F.F.
L-1	LAVATORY (HANDICAP ACCESSIBLE) KOHLER, ENAMELED CAST IRON, WALL HUNG, HUDSON MODEL NO. K-2881, 4" CENTERS, 19" x 17" LAVATORY WITH DELTA MODEL NO. 801 WITH/OUT SINGLE LEVER FAUCET WITH BRASS BODY, 5 GPM FLOW RESTRICTOR VANDAL RESISTANT AERATOR, AND SINGLE LEVER HANDLE COLOR CODED FOR TEMPERATURE SELECTION. PROVIDE MCGUIRE NO. 170 SUPPLIES WITH MCGUIRE NO. 155A DRAIN AND TAILPIECE WITH PERFORATED STRAINER, AND MCGUIRE NO. 8902 P-TRAP. PROVIDE JAY R. SMITH CARRIER #0634 TO FIT INSTALLATION REQUIREMENTS. TAILPIECE ON SUPPLIES SHALL BE COMPATIBLE WITH TAILPIECE CONNECTIONS ON SUPPLIES AND TRAP AND MCGUIRE PROWRAP COVERS ON SUPPLIES AND TRAP.	MOUNT RIM 34" A.F.F.
S-1	SINGLE SINK (HANDICAP ACCESSIBLE) JUST, MODEL NO. SL-ADA-1921-A-OR, SINGLE BOWL, 18 GAUGE, TYPE 304 STAINLESS STEEL, SELF-RIMMING, SATIN FINISHED, SOUND DEADENED, 19" x 21" x 5" WITH 14" x 18" BOWL, 3-HOLE PUNCHED, WITH CENTER BACK OUTLET, CAMBRIDGE BRASS MODEL NO. 26C3934 CAST BRASS GOOSENECK FAUCET, CHROME PLATED, WRIST BLADE HANDLES, AND VANDAL RESISTANT AERATOR. MCGUIRE NO. 170 SUPPLIES WITH ESCUTCHEONS, MCGUIRE NO. 151 GRUMB CUP STRAINER, MCGUIRE NO. 8912 P-TRAP. SUPPLIES SHALL BE COMPATIBLE WITH TAILPIECE ON FAUCET. PROVIDE MCGUIRE PROWRAP COVERS ON SUPPLIES AND TRAP (AS REQUIRED).	REFER TO ARCHITECTURAL PLANS FOR COUNTER HEIGHT.
S-2	DOUBLE SINK (HANDICAP ACCESSIBLE) JUST, DOUBLE BOWL, MODEL NO. DL-ADA-1933-AGR, 18 GAUGE, TYPE 304 STAINLESS STEEL, SATIN FINISH, SELF-RIMMING, SOUND DEADENED, 19" x 33" WITH 14" x 14" BOWLS, 5" DEEP WITH CENTER REAR OUTLET, 3-HOLE PUNCHED, WITH CAMBRIDGE BRASS MODEL NO. 26C3934 CAST BRASS SWIVEL GOOSENECK FAUCET, CHROME PLATED, WITH WRIST BLADE HANDLES, AND VANDAL-RESISTANT AERATOR. MCGUIRE NO. 170 SUPPLIES WITH MCGUIRE NO. 151 GRUMB CUP STRAINERS, MCGUIRE 1000W OFFSETS, MCGUIRE 8912 P-TRAP, AND MCGUIRE 111C1617 CONTINUOUS WASTE. SUPPLIES BE COMPATIBLE WITH TAILPIECE ON FAUCET. PROVIDE MCGUIRE PROWRAP COVERS ON SUPPLIES AND TRAP (AS REQUIRED).	REFER TO ARCHITECTURAL PLANS FOR COUNTER HEIGHT.
SH-1	SHOWER (HANDICAP ACCESSIBLE TRANSFER UNIT) AQUA GLASS MODEL #34139A (R OR L) ACRYLIC TRANSFER SHOWER WITH LOW THRESHOLD, 1 1/2" O.D. 24" VERTICAL GRAB BAR AND 28" x 18" L-SHAPED GRAB BAR OF 18 GAUGE TYPE 304 STAINLESS STEEL, 20 GAUGE TYPE 304 STAINLESS STEEL CURTAIN ROD, VINYL SHOWER CURTAIN, SELF-CLEANING BRASS DRAIN, MOLDED IN SEAT AND SOAP DISH, AND WITH DIMENSIONS OF 41" x 39 1/4" x 53 5/8" HIGH. UNIT SHALL MEET REQUIREMENTS OF ANSI 117.1 AND ADA. PROVIDE SYMONDS TEMPROL MODEL NO. C-986-300-830-X-L-V-1.5 WITH PRESSURE BALANCING ANTI-SCALD VALVE WITH INTEGRAL SERVICE STOPS, 30" CHROME-PLATED SLIDE BAR, AND WALL/HAND SPRAY UNIT WITH 5/8" O.D. OF CHROME-PLATED FLEXIBLE METAL HOSE, AND IN-LINE VACUUM BREAKER AND 1.5 GPM FLOW CONTROL. VALVE SHALL BE OF ALL BRONZE AND STAINLESS STEEL WITH ONLY ONE MOVING PART.	MOUNT VALVE 43" A.F.F. BOTTOM OF SLIDE BAR 1 1/2" ABOVE HORIZONTAL GRAB BAR, AND OUTLET OF HAND SHOWER 48" A.F.F.
EW-1	ELECTRIC WATER COOLER OASIS MODEL #P8ACSL, BARRIER-FREE SPLIT-LEVEL COOLER. UNIT SHALL HAVE SOFT-TOUCH, SELF-CLEANING TOUCH PADS AND STAINLESS STEEL ANTI-SPLASH TOP DESIGN. UNIT SHALL HAVE ALL STAINLESS STEEL FINISH. PROVIDE OPTIONAL APRON FOR UPPER BOWL OF UNIT. PROVIDE JAY R. SMITH CARRIER #0634 TO SUIT INSTALLATION. WHERE CARRIER CANNOT BE USED, SECURE FIXTURE FIRMLY TO THE WALL WITH TOGGLE BOLTS OR RAM-SET ON BLOCK WALLS, OR PROVIDE WOOD OR STEEL BLOCKING IN GYPSUM BOARD WALLS. PROVIDE MCGUIRE NO. 8902 P-TRAP AND BALL VALVE IN COLD WATER LINE WITHIN CABINET.	MOUNT LOWER SPOUT OUTLET 36" A.F.F.
WH-1	ELECTRIC WATER HEATER, 40 GALLON A.O. SMITH MODEL NO. DEN-40, 40 GALLON TALL ELECTRIC WATER HEATER. ELEMENTS SHALL BE RATED AT 4500 WATTS, 208/1/60, WITH NON-SIMULTANEOUS OPERATION. ELEMENTS SHALL BE CONTROLLED BY A MOUNTED THERMOSTAT AND HIGH TEMPERATURE CUTOFF SWITCH. HEATER SHALL BE SET AT 110°F WATER TEMPERATURE. TANK SHALL BE GLASS LINED, RATED FOR 150 PSI WORKING PRESSURE, AND SHALL HAVE A THREE-YEAR WARRANTY. WATER HEATER SHALL MEET ALL REQUIREMENTS OF CURRENT VERSION OF ASHRAE 90 EFFICIENCY STANDARDS. PROVIDE ANTI-SCALE MODEL NO. THERM-X-TROL, 31-5 EXPANSION TANK WITH 150 PSI MAXIMUM WORKING PRESSURE AND FACTORY PRE-CHARGED TO 40 PSIG.	REFER TO P1-06
CO-1	FLOOR CLEANOUT B&G SERIES 100, 15 GPM, 7 FEET HEAD, 120/1/60, 1/12 HP, ALL BRONZE CONSTRUCTION AND FLANGE HANGERS PER SECTION. JAY R. SMITH MODEL NO. 4032L OR 4033L DUCO CAST IRON CLEANOUT WITH ROUND NICKEL BRONZE SCORATED ADJUSTABLE SECURED NICKEL BRONZE TOP AND BRONZE FLUG. PROVIDE -Y CARPET CLEANOUT MARKER WHERE IN CARPET.	REFER TO P2-02
CO-2	WALL CLEANOUT JAY R. SMITH MODEL NO. 4422C DUCO CAST IRON CAULK FERRULE WITH CAST BRONZE TAPER THREADED PLUG WITH SHALLOW STAINLESS STEEL ROUND COVER AND SCREW, OR MODEL 4532S-Y DUCO CAST IRON CLEANOUT TEE AND COUNTERSUNK PLUG WITH SHALLOW STAINLESS STEEL ROUND COVER AND SCREW.	REFER TO P1-03
CO-3	EXTERIOR GROUND CLEANOUT WHERE LOCATED IN ASPHALT DRIVEWAYS OR VEHICLE TRAFFIC AREAS, PROVIDE JAY R. SMITH MODEL NO. 4235S DUCO CAST IRON CLEANOUT WITH TAPER THREADED BRONZE PLUG AND WITH DOUBLE FLANGED HOUSING WITH HEAVY DUTY SECURED SCORATED CAST IRON COVER WITH LIFTING DEVICE. WHERE LOCATED IN THE SIDEWALK OR GRASSY AREAS, PROVIDE MODEL NO. 4113 CAST IRON CLEANOUT WITH NICKEL BRONZE TOP AND BRONZE PLUG.	REFER TO P1-04
FD-1	FLOOR DRAIN WITH STRAINER JAY R. SMITH MODEL NO. 2005-A, DUCO CAST IRON BODY WITH FLASHING COLLAR AND ADJUSTABLE 6" DIAMETER POLISHED NICKEL BRONZE STRAINER. TRAP PRIMER SHALL BE JAY R. SMITH MODEL NO. 2699, CAST BRONZE WITH 1/2" CONNECTION.	
FD-2	FLOOR DRAIN WITH RECESSED STRAINER JAY R. SMITH MODEL NO. 2005-F37, DUCO CAST IRON BODY WITH FLASHING COLLAR AND ADJUSTABLE 7" DIAMETER POLISHED NICKEL BRONZE RECESSED STRAINER. TRAP PRIMER SHALL BE JAY R. SMITH MODEL NO. 2699, CAST BRONZE WITH 1/2" CONNECTION.	
H-1	FREEZELESS WALL HYDRANT JAY R. SMITH MODEL NO. 5690QT NON-FREEZE HYDRANT WITH VACUUM BREAKER, BRONZE CASING, ALL BRONZE INTERIOR PARTS, POLISHED NICKEL BRONZE FACE OPERATOR, 3/4" INDIRECT HOSE CONNECTION, AND LENGTH TO SUIT WALL CONDITIONS.	MOUNT 24" A.F.G.
H-2	HOSE BIBB CHICAGO FAUCETS NO. 293 WITH POLISHED CHROME FINISH AND REMOVABLE TEE HANDLE. VACUUM BREAKER CHICAGO FAUCETS NO. E27.	MOUNT 12" A.F.F.
H-3	HOSE BIBB WATTS BD-QT BRASS HOSE BIBB. PROVIDE SCREW-ON VACUUM BREAKER WATTS MODEL 8.	MOUNT 12" A.F.F.
IM-1	REFRIGERATOR ICE MAKER CONNECTION REFRIGERATOR SUPPLIED BY OWNER. ICE MAKER BOX DATEY MODEL NO. 13688B, 20 GAUGE STEEL BOX WITH NAILPLATE SUPPORT BRACKETS AND 1/4 TURN BRASS HAMMER BALL VALVE. COORDINATE THE MOUNTING HEIGHT WITH THE OWNER FOR THE TYPE OF REFRIGERATOR TO BE INSTALLED.	
IM-2	ICE MACHINE CONNECTION ICE MACHINE SUPPLIED IN GENERAL CONTRACT. PROVIDE 3/4" COLD WATER LINE WITH SHUT-OFF VALVE AND WATTS 98D-M2 OR M3 BACKFLOW PREVENTER. PIPE ALL WASTES TO FLOOR DRAIN.	REFER TO P1-01

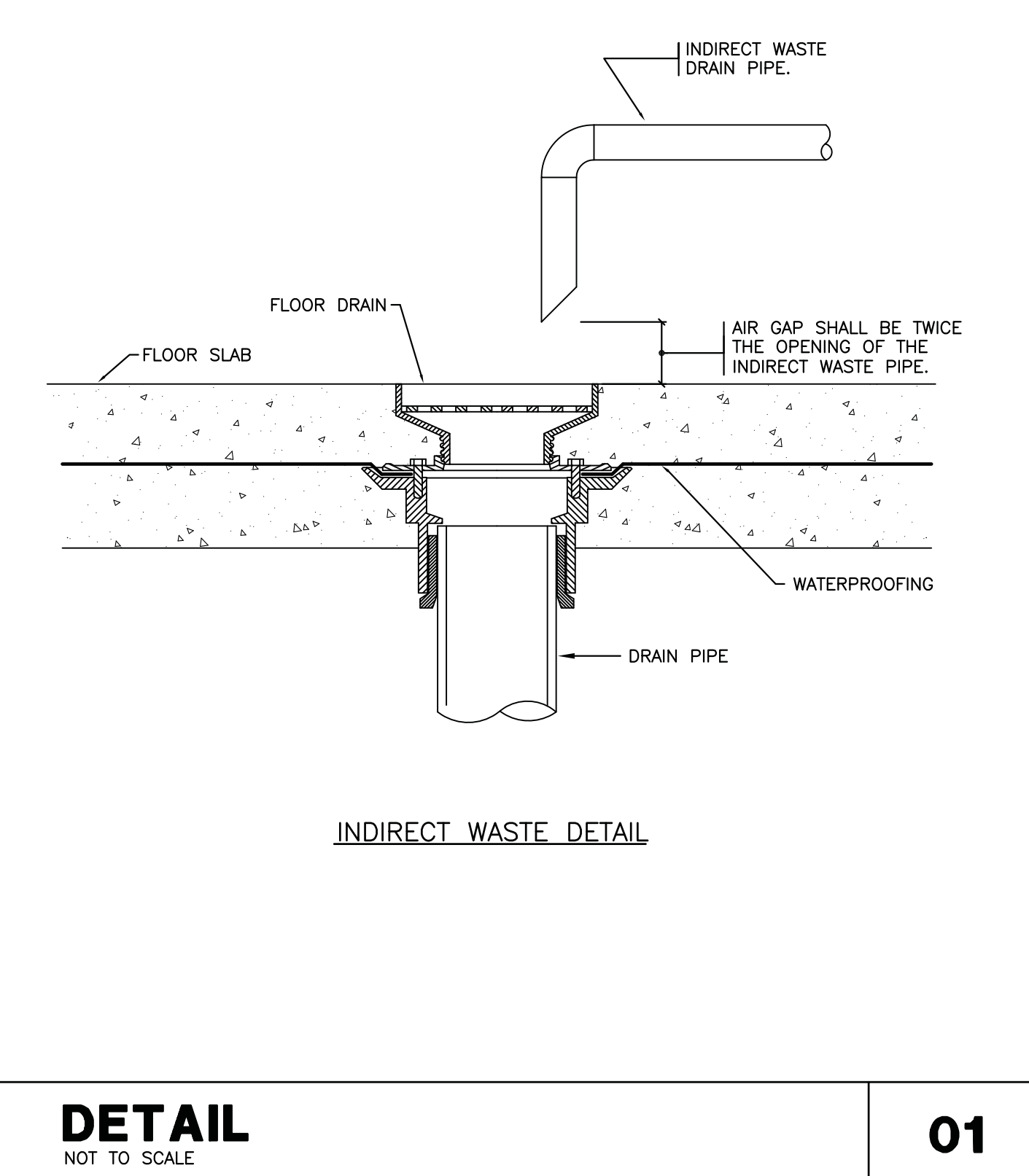
MARK	DESCRIPTION	REMARKS
GN-1	GENERAL NOTES	<ol style="list-style-type: none"> THE PLUMBING CONTRACTOR SHALL BE RESPONSIBLE FOR ALL PERMITS, FEES, AND COSTS ASSOCIATED WITH THE INSTALLATION OF PLUMBING WORK. THE PLUMBING CONTRACTOR SHALL VISIT THE PROJECT SITE PRIOR TO BIDDING AND FAMILIARIZE HIMSELF WITH THE EXISTING CONDITIONS. THE PLUMBING CONTRACTOR SHALL MAKE A COMPLETE REVIEW OF THE PLUMBING PLANS, SCHEDULES, AND DETAILS PRIOR TO INSTALLATION OF THE PLUMBING SYSTEM, AND REVIEW ANY CONFLICTS WITH THE ENGINEERING PLANS THAT ARE NOTED WITH THE ENGINEER. REFER TO THE ARCHITECTURAL PLANS FOR ALL FLOOR PLAN DIMENSIONS. DO NOT SCALE THESE PLANS. EACH CONTRACTOR SHALL PROVIDE AND INSTALL HIS OWN SUPPORT DEVICES. ALL LOCATIONS SHALL BE COORDINATED WITH THE GENERAL CONTRACTOR PRIOR TO INSTALLATION. THE PLUMBING CONTRACTOR SHALL PROVIDE ALL OPENINGS IN WALLS AND FLOORS UNLESS NOTED OTHERWISE. HE SHALL VERIFY LOCATION AND SIZE OF ALL OPENINGS REQUIRED UNDER THIS CONTRACT WITH THE GENERAL CONTRACTOR. IT WILL BE THE RESPONSIBILITY OF THE PLUMBING CONTRACTOR TO INSURE THAT ITEMS TO BE FURNISHED UNDER HIS CONTRACT WILL FIT THE SPACE AVAILABLE. HE SHALL MAKE NECESSARY FIELD MEASUREMENTS TO DETERMINE SPACE REQUIREMENTS, INCLUDING THOSE FOR CONNECTIONS AND SERVICE REQUIREMENTS, AND SHALL FURNISH AND INSTALL SUCH SIZES AND SHAPES OF EQUIPMENT THAT ARE THE TRUE INTENT AND MEANING OF THE DRAWINGS AND SPECIFICATIONS. THE PLUMBING CONTRACTOR SHALL COORDINATE WITH ALL PRIME CONTRACTORS, THE INSTALLATION OF EQUIPMENT UNDER THIS CONTRACT, PRIOR TO THE INSTALLATION, IN ORDER TO AVOID CONFLICT WITH OTHERS. IF AN ALTERNATE METHOD OF INSTALLATION IS REQUIRED, IT SHALL BE COORDINATED WITH THE ENGINEER OR ARCHITECT PRIOR TO START OF THE NEW WORK. INSTALL ALL THREADED CLEANOUT PLUGS WITH PIPE DOPE TO ALLOW FOR EASY REMOVAL IN THE FUTURE. THE PLUMBING CONTRACTOR SHALL BE RESPONSIBLE FOR ALL ELECTRICAL AND CONTROL CONNECTIONS TO THE EQUIPMENT PROVIDED UNDER THIS CONTRACT. REFER TO THE ELECTRICAL PLANS FOR LOCATIONS OF JUNCTION BOXES, DISCONNECTS, AND CIRCUIT BREAKERS (PANELBOARDS), TYPE, SIZE, AND NUMBER OF CONDUCTORS AND CONDUITS TO EQUIPMENT SHALL BE EQUAL TO THE CONDUCTORS AND CONDUITS PROVIDED BY THE ELECTRICAL CONTRACTOR TO THE JUNCTION BOXES AND DISCONNECT SWITCHES. IN CASE OF PLUMBING EQUIPMENT CONNECTION TO A CIRCUIT BREAKER, THE NUMBER AND SIZE OF THE CONDUCTORS AND CONDUITS SHALL CONFORM TO THE LATEST NATIONAL ELECTRICAL CODE REGULATIONS. ALL MOTOR STARTERS, SWITCHES, CONTROL DEVICES, ETC. PROVIDED BY THIS CONTRACTOR SHALL BE RECESSED IN THE WALLS, EXCEPT WHERE THESE ITEMS ARE LOCATED IN THE MECHANICAL ROOMS. PROVIDE A NAMEPLATE FOR ALL EQUIPMENT, SWITCHES, CONTROL DEVICES, ETC. THE WATER HEATER SHALL COMPLY WITH THE NATIONAL ELECTRICAL CODE. ALL PLUMBING FIXTURES SHALL BE NEATLY CAULKED WITH SILICONE CAULKING COMPOUND WHERE THE FIXTURE MEETS THE WALL OR FLOOR, EXCEPT WHERE WATER COOLERS ARE LOCATED ON GYPSUM BOARD WALLS. INSTALL ALL SINKS AND COUNTERTOP LAVATORIES WATER-TIGHT. THE PLUMBING CONTRACTOR SHALL BE RESPONSIBLE FOR INSTALLING FLOOR DRAIN STRAINERS AND CLEANOUT TOPS FLUSH WITH THE FINISHED FLOOR ELEVATION. A RAISED OR LOWERED STRAINER OR CLEANOUT TOP WILL NOT BE ACCEPTABLE. THE PLUMBING CONTRACTOR SHALL INSTALL 18" HIGH AIR CHAMBER SHOCK ABSORBERS AT EACH FIXTURE, EXCEPT WHERE MANUFACTURED SHOCK ABSORBERS ARE SHOWN ON THE DRAWINGS. THE AIR CHAMBER SHALL BE THE SAME SIZE AS THE WATER LINE SERVING THE FIXTURE. CONTRACTOR SHALL PROVIDE TRAP PRIMER VALVES AS NOTED IN FIXTURE SCHEDULE AND AS NOTED ON PLANS. TRAP PRIMER VALVES SHALL BE INSTALLED AS REQUIRED BY MANUFACTURER'S INSTRUCTIONS. TRAP PRIMER VALVE SHALL BE INSTALLED IN A MINIMUM OF 1/2" SIZE COLD WATER LINE AND SHALL BE LOCATED AT NEAREST FIXTURE TO DEVICE TO BE PRIMED IN A TRAP. TRAP PRIMERS MAY BE ELIMINATED WHERE HOSE BIBBS ARE INSTALLED AND FLOORS ARE WASHABLE. WHERE VALVES ON WATER LINES ARE LOCATED OVERHEAD, LOCATE THEM 8" ABOVE CEILING. THE FLASHING AND COUNTERFLASHING FOR ALL VENTS THROUGH THE ROOF SHALL BE PROVIDED AND INSTALLED BY THE GENERAL CONTRACTOR. THE PLUMBING CONTRACTOR SHALL COORDINATE ALL LOCATIONS OF THE VENTS THROUGH THE ROOF WITH THE ROOFING SUB-CONTRACTOR. ALL VENTS THROUGH THE ROOF SHALL BE A MINIMUM OF 10'-0" FROM ALL MAKE-UP AIR INLETS OR A MINIMUM OF 2'-0" ABOVE THE TOP OF SUCH OPENINGS. PAINT AND COLOR CODE ALL EXPOSED PIPING IN MECHANICAL ROOMS. ABOVE CEILING PIPING SHALL HAVE FLOW ARROWS AND LABELS TO FOOT INTERVALS. AT ALL TURNS, AND AT EACH FLOOR OR WALL PENETRATION, AND SHALL BE COLOR CODED AS FOLLOWS: COLD WATER - GREEN HOT WATER - LIGHT RED GAS - YELLOW COMPRESSED AIR - BLUE INSTALL INSULATED WATER PIPING IN EXTERIOR WALLS ON THE INTERIOR SIDE OF THE WALL INSULATION. SEE SPECIFICATIONS FOR SIZE AND TYPE INSULATION TO BE USED. ALL GUTTERS, DOWNSPOUTS, AND STORM WATER PIPING SHALL BE PROVIDED AND INSTALLED BY THE GENERAL CONTRACTOR.
GN-2	GENERAL PROVISIONS	<ol style="list-style-type: none"> SUBMIT A DETAILED LIST OF EQUIPMENT AND MATERIALS PROPOSED FOR USE. PROVIDE MAINTENANCE AND OPERATION MANUALS UPON COMPLETION OF PROJECT.
GN-3	VALVES	<ol style="list-style-type: none"> VALVES SHALL BE ALL BRONZE CONSTRUCTION. VALVES SHALL BE INSTALLED AS SCHEDULED AND NOTED ON THE PLANS. VALVES SHALL BE FULL PORT, BALL VALVES - EXCEPT WHERE SPECIFIED DIFFERENTLY ON THE PLANS.
GN-4	PIPE HANGERS AND SUPPORTS	<ol style="list-style-type: none"> PVC PIPING SHALL HAVE A MINIMUM OF TWO HANGERS PER SECTION. SLEEVES SHALL BE PROVIDED WHERE PIPES PASS THROUGH WALLS, FLOORS, AND CEILINGS. SLEEVES SHALL BE SCHEDULE 40 BLACK STEEL. HANGERS SPACING SHALL CONFORM TO THE NORTH CAROLINA PLUMBING CODE, 2009 EDITION TABLE 308.5.
GN-5	ELECTRICAL WORK	<ol style="list-style-type: none"> PROVIDE FINAL ELECTRICAL CONNECTIONS TO ALL EQUIPMENT INSTALLED IN THIS CONTRACT. ALL ELECTRICAL WORK SHALL BE PERFORMED BY LICENSED ELECTRICIAN. ALL ELECTRICAL WORK AND PRODUCTS SHALL BE IN CONFORMANCE WITH THE NATIONAL ELECTRIC CODE.
GN-6	PIPE INSULATION	<ol style="list-style-type: none"> ALL INSULATION, LININGS, COVERINGS AND ADHESIVES SHALL HAVE A FLAME SPREAD CLASSIFICATION OF 25 OR LESS AND A SMOKE DEVELOPED RATING OF NOT MORE THAN 50. HOT WATER PIPING SHALL BE INSULATED WITH 1" THICK SECTIONAL FIBERGLASS. COLD WATER PIPING SHALL BE INSULATED WITH 1/2" THICK SECTIONAL FIBERGLASS. HORIZONTAL SANITARY SEWER PIPING ABOVE THE FLOOR SHALL BE INSULATED.
GN-7	FIRE PROTECTION MAIN WATER SUPPLY	<ol style="list-style-type: none"> ALL WORK SHALL BE IN ACCORDANCE WITH N. C. BUILDING CODE AND CHAPTER 8 OF NFPA 24. PROVIDE ALL TRENCH EXCAVATION AND BACKFILL FOR INSTALLATION OF HARD PIPING. WATER MAIN SHALL BE DUCTILE IRON PIPE CONFORMING TO AWWA SPECIFICATION C151. PROVIDE CERTIFICATION OF FLUSHING AND TESTING PER NFPA 24.
GN-8	DOMESTIC WATER PIPE AND FITTINGS	<ol style="list-style-type: none"> WATER PIPING ABOVE GROUND SHALL BE TYPE "L" HARD DRAWN COPPER. WATER PIPING BELOW GROUND, INSIDE AND OUTSIDE, SHALL BE TYPE "K" SOFT DRAWN COPPER. HOT AND COLD WATER PIPING SHALL BE SUPPORTED AT A MAXIMUM HORIZONTAL SPACING OF 6'-0" ON CENTER AND AT EVERY CHANGE OF DIRECTION.
GN-9	PIPING SPECIALTIES	<ol style="list-style-type: none"> ESCUTCHEONS, STOPS AND P-TRAPS SHALL BE CHROME-PLATED BRASS. INSULATING COUPLINGS SHALL BE 6-LINE. SHOCK ABSORBERS SHALL BE STAINLESS STEEL AND IN CONFORMANCE WITH PDI STANDARD WH201. DIELECTRIC WATERWAY FITTINGS SHALL HAVE ELECTROPLATED STEEL OR BRASS NIPPLE WITH AND INERT AND NONCORROSIVE THERMOPLASTIC LINING. UNIONS SHALL BE BRONZE BODY WITH PACKLESS BRASS GROUND JOINTS.
GN-10	PLUMBING PUMPS - RECIRCULATING	<ol style="list-style-type: none"> PUMPS SHALL BE SCHEDULED ON THE DRAWINGS. PUMPS SHALL HAVE BRONZE CASING, BRONZE OR STAINLESS STEEL IMPELLER, VERTICAL SPLIT CASING, BRONZE REMOVABLE SHAFT SLEEVES AND MECHANICAL SEALS FOR SERVICE ACCESS. BEARING ASSEMBLY WITH SEAL & IMPELLER SHALL BE REMOVABLE WITHOUT DISTURBING PIPE CONNECTIONS. PUMPS AND MOTORS SHALL BE INTERCHANGEABLE WITH MANUFACTURER'S RECOMMENDATIONS. PUMP AND SEAL SHALL HAVE 125 PSI WORKING PRESSURE.
GN-11	SANITARY WASTE AND VENT PIPE AND FITTINGS	<ol style="list-style-type: none"> SANITARY WASTE AND VENT PIPING, EXTERIOR AND INTERIOR, SHALL BE SOLID SCHEDULE 40 PVC-DWV SOIL PIPE AND FITTINGS WITH SOLVENT-WELD JOINTS. NO FOAM CORE PVC WILL BE ALLOWED. JOINTS SHALL BE MADE WATER AND GAS TIGHT IN ACCORDANCE WITH MANUFACTURER'S RECOMMENDATIONS. HORIZONTAL SANITARY WASTE AND VENT PIPING SUPPORT SHALL BE MAXIMUM 4' SPACING AND VERTICAL PIPE SHALL BE MAXIMUM 10' SPACING, WITH A MISTERY GUIDE FOR SIZES 2 INCHES AND SMALLER.
GN-12	COMPRESSED AIR PIPE AND FITTINGS	<ol style="list-style-type: none"> COMPRESSED AIR PIPING SHALL BE TYPE "L" HARD DRAWN COPPER. FITTINGS SHALL BE SCHEDULED ON THE DRAWINGS. VALVES SHALL BE THREE-PIECE FULL-PORT BRONZE BALL VALVES, NIBCO G-595-Y OR EQUAL. QUICK CONNECT OUTLETS SHALL BE AMPLD, PREVOIST, TRANSAIR, OR MILTON AS REQUIRED. THE SPACING OF HANGERS AND SUPPORTS SHALL NOT EXCEED SIX FEET.
GN-13	NATURAL GAS PIPE AND FITTINGS	<ol style="list-style-type: none"> ALL GAS PIPING SHALL BE SCHEDULE 40, BLACK STEEL PIPE CONFORMING TO ASTM A-120. WELDED FITTINGS SHALL CONFORM TO ASTM A-234. SCREWED FITTINGS SHALL CONFORM TO ANSI B16.3.
GN-14	PLUMBING FIXTURES	<ol style="list-style-type: none"> ALL HANDICAPPED ACCESSIBLE FIXTURES AND TRIM SHALL BE INSTALLED IN ACCORDANCE WITH ANSI A117.1 - 2003.

SYMBOL	DESCRIPTION
---	WASTE PIPING
----	VENT PIPING
----	COLD WATER PIPING
----	HOT WATER PIPING
----	HOT WATER RETURN PIPING
----	GAS PIPING
----	COMPRESSED AIR PIPING
----	FIRE LINE PIPING
----	CLEANOUT AT WALL
----	CLEANOUT AT FINISHED FLOOR OR FINISHED GRADE
----	BALL VALVE
----	CHECK VALVE
----	UNION
----	HYDRANT
----	PIPE TURNS UP
----	PIPE TURNS DOWN
----	VENT THROUGH ROOF
----	FINISH FLOOR ELEVATION
----	BELOW FINISH FLOOR
----	ABOVE FINISH FLOOR
----	INVERT OF PIPING
----	SHOCK ABSORBER WITH PDI SIZE (REFER TO SCHEDULE)
----	HOT WATER RECIRCULATION PUMP
----	COMPRESSED AIR DROP

CONNECTION SCHEDULE	WASTE	COLD WATER	HOT WATER
WATER CLOSET (FLUSH VALVE)	4"	1"	-
URINAL (FLUSH VALVE)	2"	3/4"	-
LAVATORY	2"	1/2"	1/2"
SINK	2"	1/2"	1/2"
SHOWER	3"	1/2"	1/2"
MOP RECEPTOR	3"	3/4"	3/4"
ELECTRIC WATER COOLER	2"	1/2"	-
HYDRANT	-	3/4"	-

LOAD SUMMARY	WASTE DEMAND IN FIXTURE UNITS	WATER DEMAND IN FIXTURE UNITS	WATER DEMAND IN G.P.M.	NATURAL GAS DEMAND IN BTUH
	67	117.7	72	1,400,000

SHOCK ABSORBER SCHEDULE	PDI DESIG	ZURN 2-1700 SERIES SHOKTROL	MAX FU
A	#100		11
B	#200		32
C	#300		60
D	#400		113
E	#500		154
F	#600		330



DETAIL
NOT TO SCALE

01

SMITHSINNETT
architecture

PROJECT ARCHITECT
SMITHSINNETT

PROJECT DESIGNER
GLUECK

DRAWN BY
JGU

CHECKED BY
SMC

PROJECT # 110202
F 191 101 0802
F 191 101 2019
4801 Lake Boone Trail
Suite 200
Raleigh, NC 27615
Phone: (919) 790-9880
Fax: (919) 790-9887
License No.: C-0183
http://smithsinnett.com

pdc
PDC# 11010
Progressive Design Collaborative, LLC
2900 Bynland Road, Suite 100
Raleigh, N.C. 27615
Phone: (919) 790-9880
Fax: (919) 790-9887
License No.: C-0183

THE SEAL OF THE PROFESSIONAL ENGINEER
STATE OF NORTH CAROLINA
SEAL 07520
JAMES W. CAMERON
P.L.L.C.

Revisions

The drawings of this design (shown in red) were prepared by the Architectural Firm of SmithSinnett Architecture, P.A. The reproduction of these drawings without the written consent of the Architectural Firm is prohibited. Any reprinting of these drawings without the written consent of the Architectural Firm is prohibited. All copies of these drawings are the property of SmithSinnett Architecture, P.A. and shall remain the property of the Architectural Firm.

SmithSinnett Architecture, P.A., 2011

Coastal Enterprises

SYMBOL LEGEND
GENERAL NOTES
DETAILS

2010025 25 APR 2011

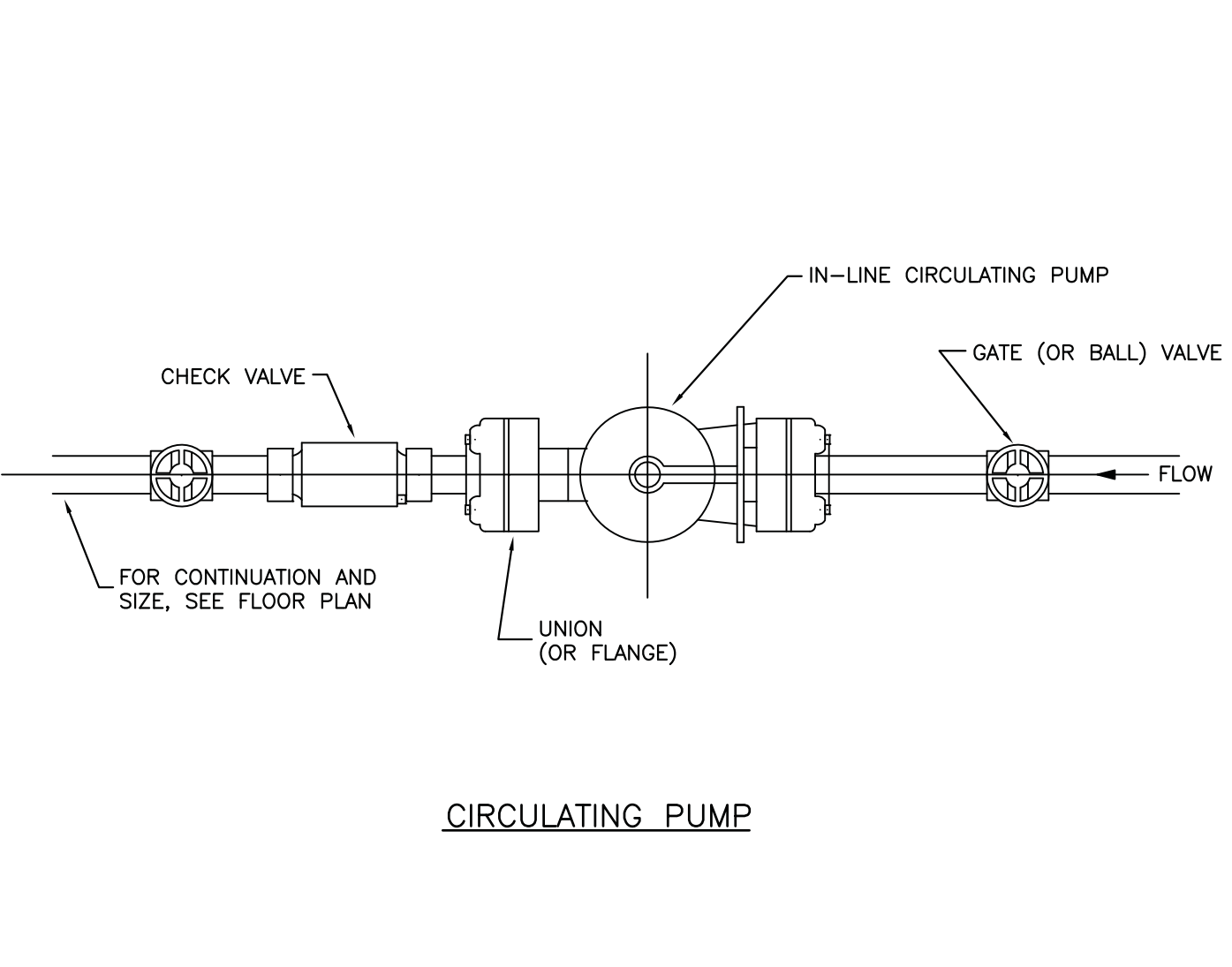
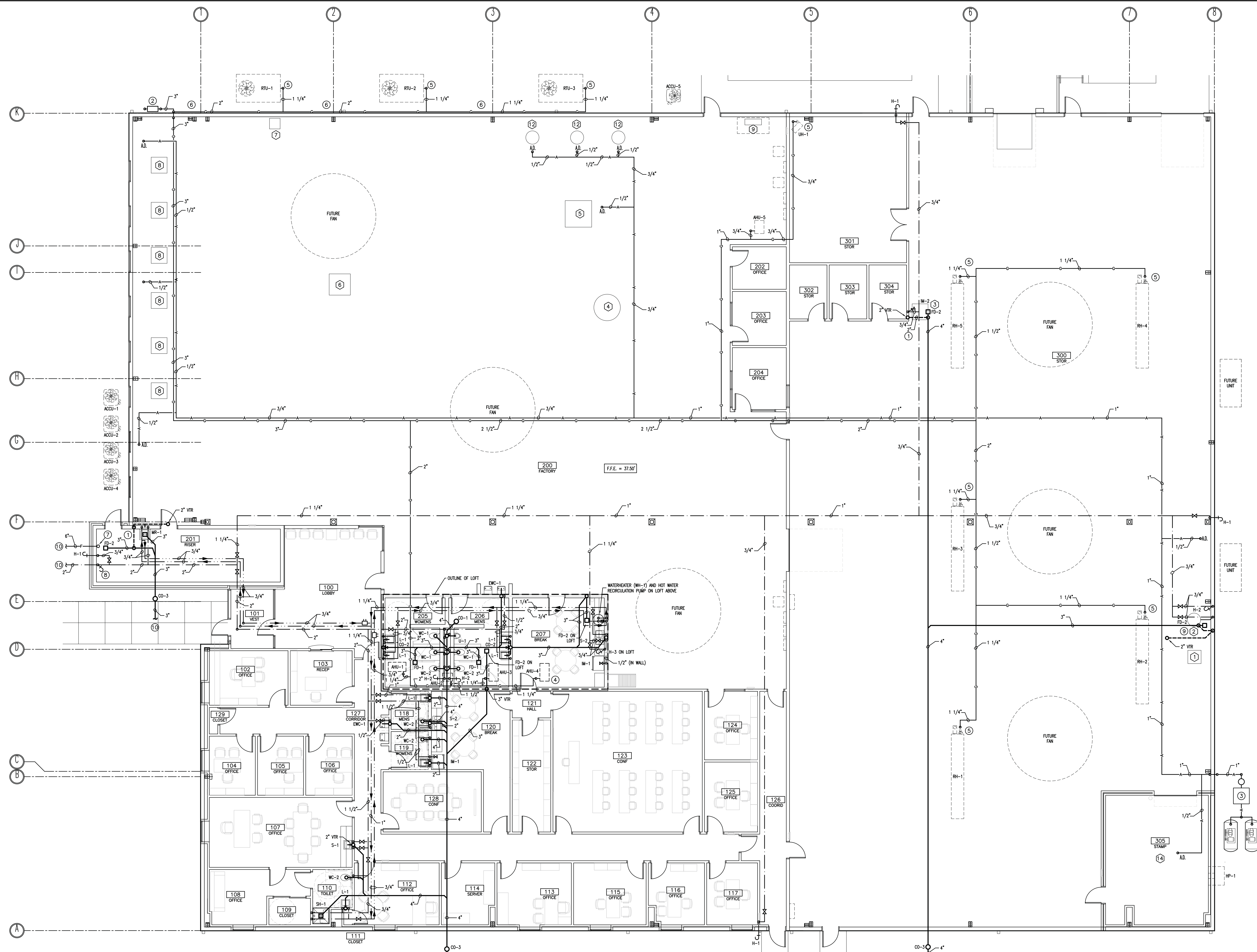
P-1

EQUIPMENT SCHEDULE					
MARK	DESCRIPTION	FURNISHED BY INSTALLED BY	MFG / LINE	ELECTRICAL REQUIREMENTS (IF APPLICABLE)	PLUMBING REQUIREMENTS (IF APPLICABLE)
1	DRYER			208V- 3 PHASE	
2	BALL BURNISHING MACHINE			240V- 2 PHASE	3/4" WATER LINE
3	ICE MACHINE			120V	3/4" WATER, F.D.
4	GROMMET MACHINE			120V	
5	STAKING MACHINE				COMPRESSED AIR
6	CLICKER PRESS			230/460V- 3 PHASE	
7	SNAP STUD MACHINE			208/260V- 3 PHASE	
8	SEWING MACHINE			250V	
9	CUTTING TABLE W/VENT HOOD				
10	AID RECEPTACLES @ WALL/COLUMNS			120V	
11	RECEPTACLE FOR TASK LIGHTING FIXTURE			120V	
12	CLOSING MACHINE				COMPRESSED AIR
13	AIR COMPRESSOR				
14	STAMP MACHINE			208V- 3 PHASE	

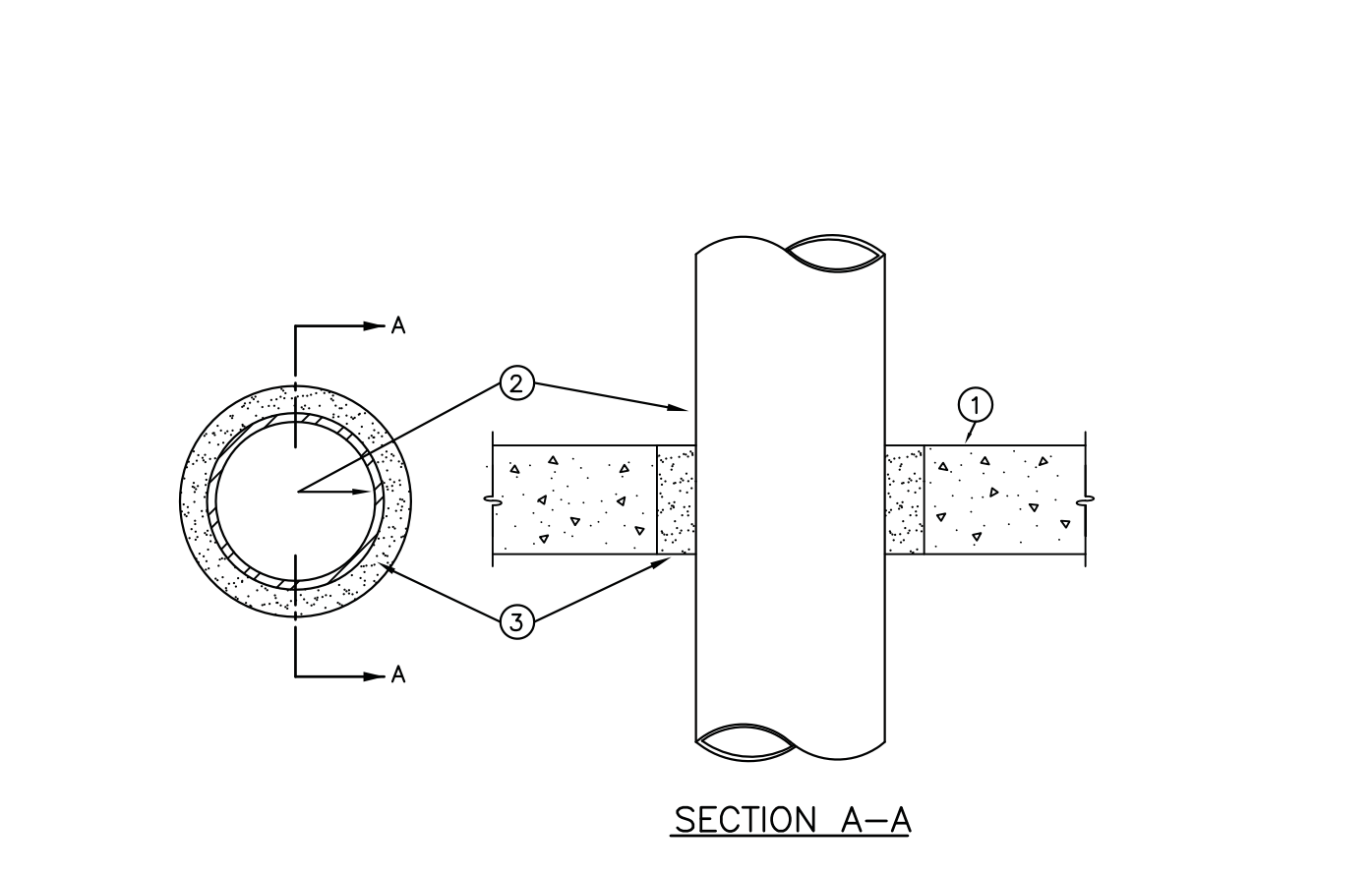
NOTES:
 1. CONTRACTOR TO FIELD VERIFY EXACT LOCATION OF EQUIPMENT WITH OWNER PRIOR TO THE INSTALLATION OF ANY PME PROVISIONS
 2. OWNER NEEDS FEED @ CL- 2
 3. PROVIDE SUPPLY LINE AND DRAIN.
 4. PROVIDE BLANK ADAPTER.

REMARKS:
 1. ALL AIR DROPS AND WATER LINES SHALL BE COPPER.

SCHEDULE ABBREVIATIONS
 A.D. - AIR DROPS - TERMINATE 4" A.F.F. WITH A VALVE, DIRT LEG, AND QUICK CONNECT OUTLET.
 C.F.D. - CONTRACTOR FURNISHED CONTRACTOR INSTALLED
 O.F.D. - OWNER FURNISHED, CONTRACTOR INSTALLED.
 O.F.C. - OWNER FURNISHED, OWNER INSTALLED.



DETAIL 02
NOT TO SCALE



DETAIL 03
NOT TO SCALE

- 01 PLUMBING PLAN**
1/8" = 1'-0"
- NOTES: (AS INDICATED ON THIS PLAN BY A NUMBER IN A ○)
- RUN UNDER FLOOR.
 - GAS METER BY GAS COMPANY. 1,340,000 BTUH @ 7" WATER COLUMN PRESSURE.
 - MAKE CONNECTION TO AIR COMPRESSORS, REFRIGERATED AIR DRYER, AND FILTER PROVIDED BY OWNER. PROVIDE ALL FITTINGS ETC. REQUIRED FOR A COMPLETE INSTALLATION.
 - AHU-1 THROUGH 4 ARE ON THE LOFT. PROVIDE GAS DROP WITH GAS COCK AND DIRT LEG. FINAL CONNECTION BY MECHANICAL CONTRACTOR.
 - PROVIDE GAS DROP WITH GAS COCK AND DIRT LEG. FINAL CONNECTION BY MECHANICAL CONTRACTOR.
 - RUN GAS LINE ON WALL SUPPORTED BY STANDOFF CLAMPS.
 - 6" FIRE LINE RISE. TERMINATE WITH BLIND FLANGE 1'-0" A.F.F. FOR CONTINUATION BY SPRINKLER CONTRACTOR.
 - 2" DOMESTIC WATER RISE. PROVIDE BALL VALVE AND HOSE BIBB DRAIN IN VERTICAL. PROVIDE PRESSURE REDUCING STATION. REFER TO P1-05.
 - PROVIDE BACKFLOW PREVENTER WATTS 98 MODIFICATION M2 OR M3 ON WATER LINE.
 - PROVIDE MATERIALS REQUIRED AND MAKE CONNECTION TO EXTERIOR PIPING. REFER TO CIVIL SITE PLANS.

SMITHSINNETT
architecture

PDC # 11010
 Progressive Design Collaborative, LTH
 2900 Birkland Road, Suite 100
 Raleigh, N.C. 27615
 Phone: (919) 790-9989
 Fax: (919) 790-9987
 License No.: C-0183

project architect: SINNETT
 project designer: GLUECK
 drawn by: JGU
 checked by: SMC

revisions

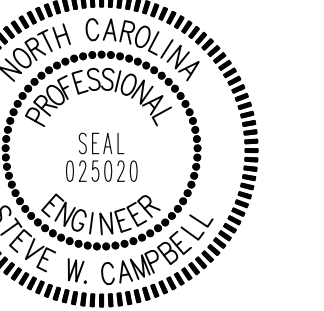
The drawings on this design show the work of SmithSinnett Architecture, P.A. The reproduction of these drawings without the written consent of the architect is prohibited. Any reproduction of these drawings without the written consent of the architect is prohibited. All work of the drawing shall be done in accordance with the contract. SmithSinnett Architecture, P.A., 2011

Coastal Enterprises

PLUMBING PLAN

2010025 25 APR 2011

P-2



project architect
SMITHSINNETT
project designer
GLUECK
drawn by
JGU
checked by
SMC

revisions

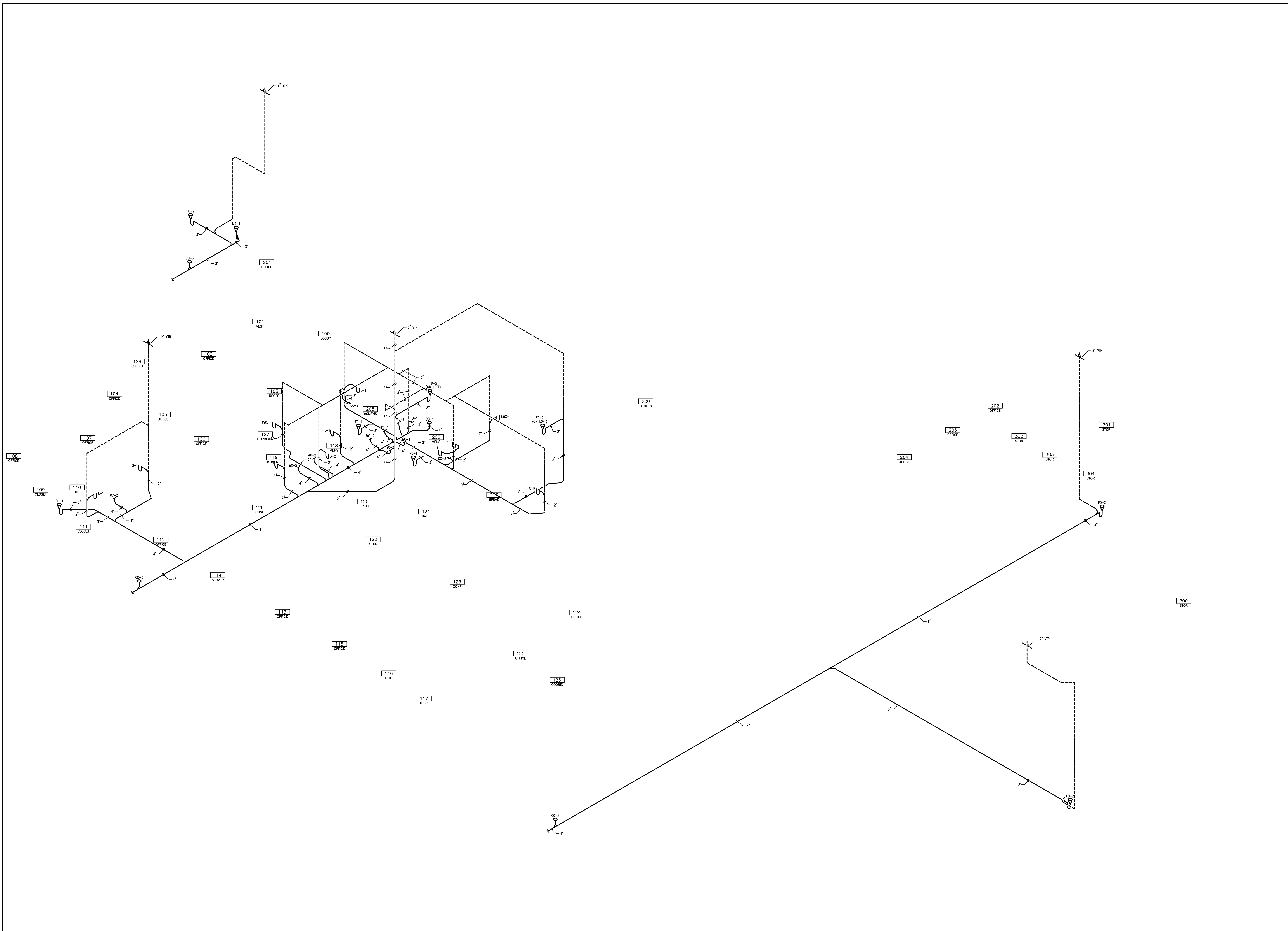
The drawings and the design shown herein are the property of SmithSinnett Architecture, P.A. The reproduction or use of these drawings without the written consent of the architect is prohibited. Any preparation of the drawings by others is at the architect's legal liability. All copies of these drawings shall be returned to the architect at the completion of the contract.
SmithSinnett Architecture, P.A., 2011

Coastal Enterprises

WASTE & VENT RISER

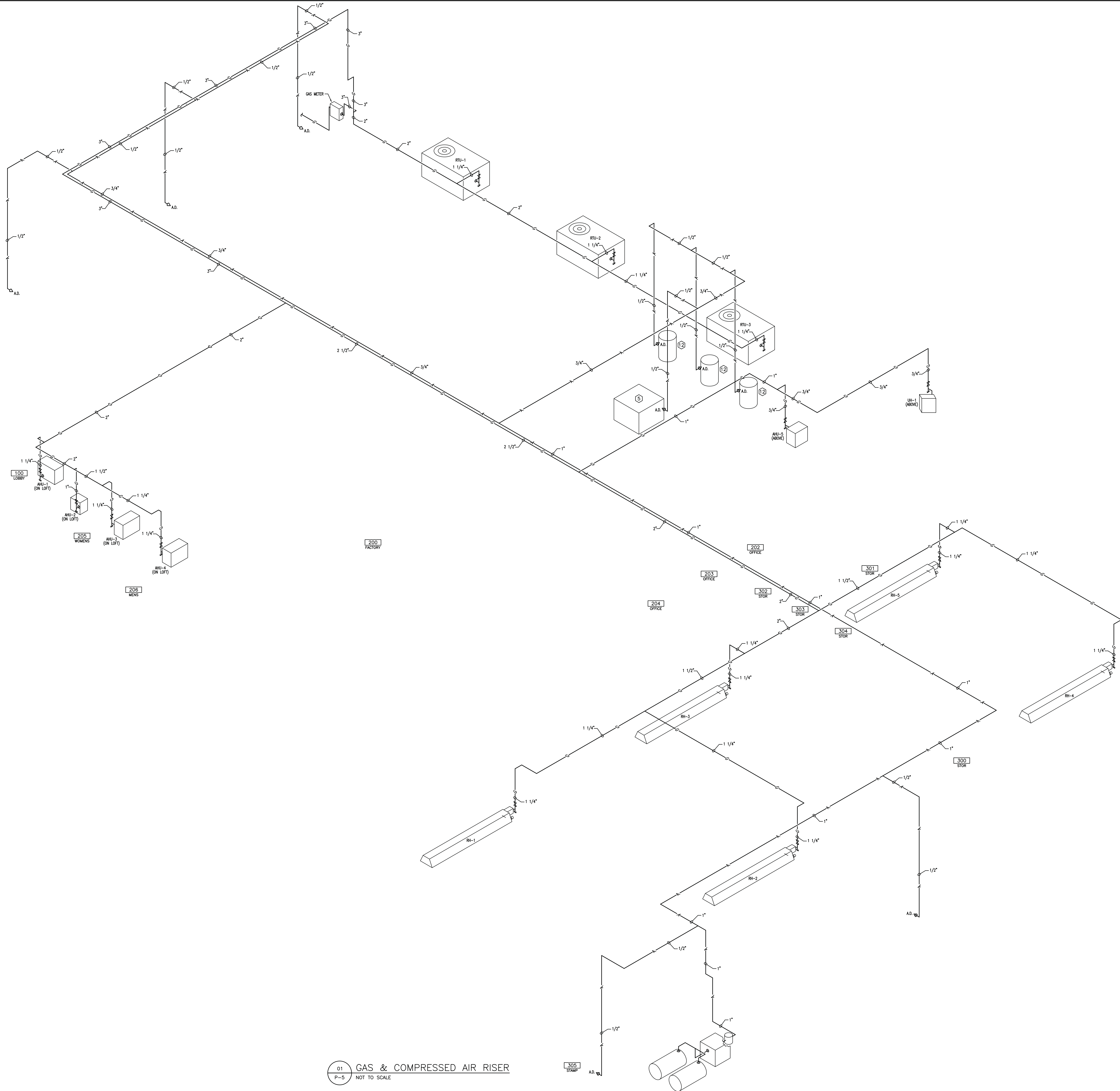
2010025 25 APR 2011

P-3



NOTE:
ALL VENT PIPING SHALL BE 2"
UNLESS OTHERWISE NOTED.

01 WASTE & VENT RISER
P-3 NOT TO SCALE

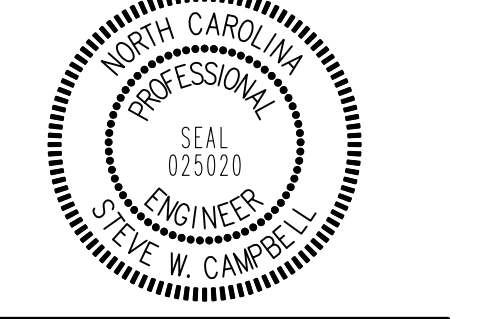


01 GAS & COMPRESSED AIR RISER
P-5 NOT TO SCALE

305-1
STAMP
A.D.

T 919 761 8882
F 919 761 2879
4901 Lake Boone Trail
Suite 200
Raleigh, NC 27607
info@smithsinnett.com

pdc
PDC# 11010
Progressive Design Collaborative, LTH
2900 Boyland Road, Suite 100
Raleigh, N.C. 27615
Phone: (919) 790-9989
Fax: (919) 790-9987
License No.: C-0183



project architect: SMINETT
project designer: GLUECK
drawn by: JGU
checked by: SMC

Revisions

The drawings and the design shown herein are the property of Smithsinnett Architecture, P.A. The reproduction or use of these drawings without the written consent of the architect is prohibited. Any misinterpretation of the drawings is the responsibility of the user. All work shall be completed at the completion of the contract.
Smithsinnett Architecture, P.A., 2011

Project #: 11010
Sheet #: P-5
Printed By: rmc
By: 5/2011 @ 9:55 AM
Printed: